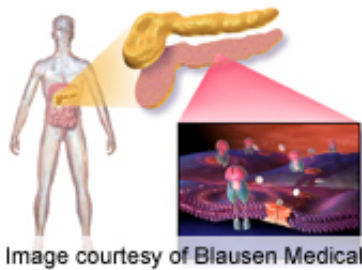


# Imeglimin beneficial as add-on to metformin in T2DM

December 14 2012

---



For patients with type 2 diabetes inadequately controlled by metformin alone, addition of the new oral anti-diabetes agent imeglimin improves glycemic control with good tolerability and safety, according to a study published online Nov. 16 in *Diabetes Care*.

(HealthDay)—For patients with type 2 diabetes inadequately controlled by metformin alone, addition of the new oral anti-diabetes agent imeglimin improves glycemic control with good tolerability and safety, according to a study published online Nov. 16 in *Diabetes Care*.

Pascale Fouqueray, M.D., of Poxel in Lyon, France, and colleagues conducted a 12-week, phase II, randomized, controlled study involving 156 patients with type 2 diabetes who were inadequately controlled on metformin alone to assess the efficacy and safety of imeglimin as add-on therapy. Patients received a stable dose of metformin (1,500 to 2,000 mg/day) plus imeglimin (1,500 mg twice daily) or placebo.

After 12 weeks, the researchers found that the placebo-subtracted decrease in hemoglobin A1c was a significant  $-0.44$  percent with metformin-imeglimin. Compared with metformin-placebo, metformin-imeglimin correlated with significant improvements in fasting [plasma glucose](#) and the proinsulin/insulin ratio from baseline. The safety profile of the metformin-imeglimin combination was similar to that of metformin-placebo, and the combination was generally well tolerated.

"This phase II study demonstrated that first-in-class imeglimin was well tolerated and effective when combined with metformin as a potential new treatment for [type 2 diabetes](#)," the authors write.

Several authors disclosed [financial ties](#) to pharmaceutical companies, including Poxel, which primarily funded the study and manufactures imeglimin.

**More information:** [Abstract](#)  
[Full Text \(subscription or payment may be required\)](#)

Copyright © 2012 [HealthDay](#). All rights reserved.

Citation: Imeglimin beneficial as add-on to metformin in T2DM (2012, December 14) retrieved 3 February 2024 from <https://medicalxpress.com/news/2012-12-imeglimin-beneficial-add-on-metformin-t2dm.html>

<p>This document is subject to copyright. Apart from any fair dealing for the purpose of private study or research, no part may be reproduced without the written permission. The content is provided for information purposes only.</p>
--