

Retinopathy severity linked to cardiovascular outcome

January 25 2013

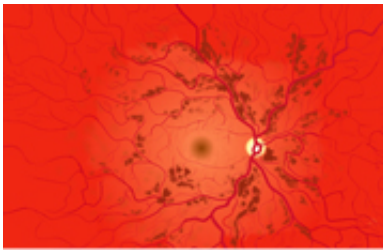


Image courtesy of Blausen Medical

For individuals with type 2 diabetes, incident cardiovascular outcomes are determined not only by the severity of diabetic retinopathy but also by its progression, according to research published online Dec. 13 in *Diabetes Care*.

(HealthDay)—For individuals with type 2 diabetes, incident cardiovascular outcomes are determined not only by the severity of diabetic retinopathy but also by its progression, according to research published online Dec. 13 in *Diabetes Care*.

Hertzel C. Gerstein, M.D., of McMaster University in Hamilton, Canada, and colleagues examined the correlation between retinopathy, four-year progression, and cardiovascular outcomes ([cardiovascular death](#), nonfatal [myocardial infarction](#), or stroke) using data from 3,433 participants in the Action to Control Cardiovascular Risk in Diabetes (ACCORD) trial and ACCORD Eye Study, who had baseline retinal photographs.

The researchers found that the adjusted hazard ratio for cardiovascular outcome increased from 1.49 for mild retinopathy to 2.35 for severe retinopathy, compared with no retinopathy. For a subset of 2,856 participants evaluated for disease progression at four years, for each category of change in retinopathy severity, the risk of the primary outcome increased by 38 percent. The correlation between progression and [cardiovascular outcomes](#) was no longer significant after adjustment for the baseline and follow-up levels of glycated hemoglobin, systolic blood pressure, and lipids either individually or together.

"The clear link between progression of retinal disease and cardiovascular disease suggests that these two serious consequences of diabetes may share an underlying pathophysiological basis," the authors write.

More information: [Abstract](#)
[Full Text \(subscription or payment may be required\)](#)

Health News Copyright © 2013 [HealthDay](#). All rights reserved.

Citation: Retinopathy severity linked to cardiovascular outcome (2013, January 25) retrieved 19 November 2023 from
<https://medicalxpress.com/news/2013-01-retinopathy-severity-linked-cardiovascular-outcome.html>

<p>This document is subject to copyright. Apart from any fair dealing for the purpose of private study or research, no part may be reproduced without the written permission. The content is provided for information purposes only.</p>
--