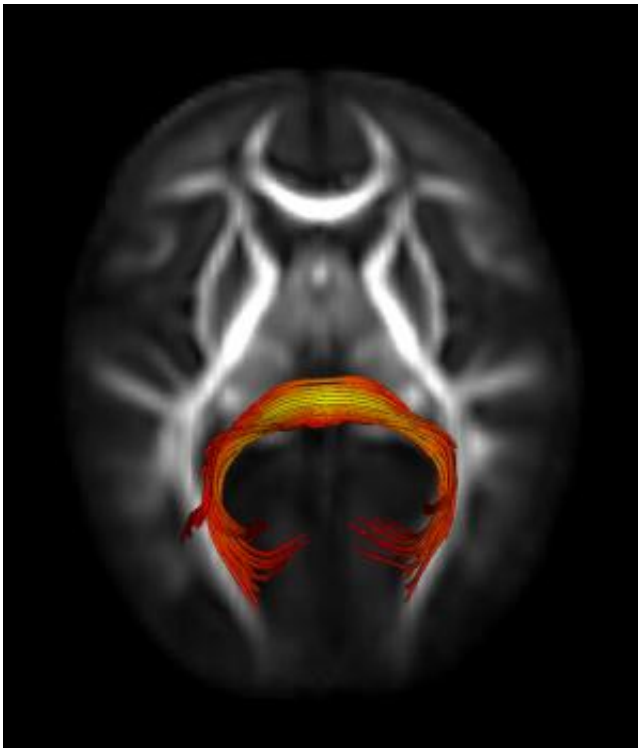


Atypical brain circuits may cause slower gaze shifting in infants who later develop autism

March 20 2013



Splenium of the Corpus Callosum: This is a white matter fiber bundle that supports visual orienting in typically developing infants and may be implicated in the early development of autism spectrum disorders. Credit: Jason Wolff, Ph.D., UNC

Infants at 7 months of age who go on to develop autism are slower to reorient their gaze and attention from one object to another when compared to 7-month-olds who do not develop autism, and this

behavioral pattern is in part explained by atypical brain circuits.

Those are the findings of a new study led by University of North Carolina School of Medicine researchers and published online March 20 by the *American Journal of Psychiatry*.

"These findings suggest that 7-month-olds who go on to develop autism show subtle, yet overt, behavioral differences prior to the emergence of the disorder. They also implicate a specific neural circuit, the splenium of the corpus callosum, which may not be functioning as it does in typically developing infants, who show more rapid orienting to [visual stimuli](#)," said Jed T. Ellison, PhD, first author of the study.

Elison worked on the study, conducted as part of the Infant Brain Imaging Study (IBIS) Network, for his doctoral dissertation at UNC. He now is a [postdoctoral fellow](#) at the California Institute of Technology. The study's senior author is Joseph Piven, MD, professor of psychiatry, director of the Carolina Institute for [Developmental Disabilities](#) at UNC, and the principle investigator of the IBIS Network.

The IBIS Network consists of research sites at UNC, Children's Hospital of Philadelphia, Washington University in St. Louis, the University of Washington in Seattle, the University of Utah in Salt Lake City, and the Montreal Neurological Institute at McGill University, and the University of Alberta are currently recruiting [younger siblings](#) of children with autism and their families for ongoing research.

"Difficulty in shifting gaze and attention that we found in 7-month-olds may be a fundamental problem in autism," Piven said. "Our hope is that this finding may help lead us to early detection and interventions that could improve outcomes for individuals with autism and their families."

The study included 97 infants: 16 high-risk infants later classified with

an autism spectrum disorder (ASD), 40 high-risk infants not meeting ASD criteria (i.e., high-risk-negative) and 41 low-risk infants. For this study, infants participated in an eye-tracking test and a brain scan at 7 months of age a clinical assessment at 25 months of age.

The results showed that the high-risk infants later found to have ASD were slower to orient or shift their gaze (by approximately 50 milliseconds) than both high-risk-negative and low-risk infants. In addition, visual orienting ability in low-risk infants was uniquely associated with a specific neural circuit in the brain: the splenium of the corpus callosum. This association was not found in infants later classified with ASD.

The study concluded that atypical visual orienting is an early feature of later emerging ASD and is associated with a deficit in a specific [neural circuit](#) in the brain.

Provided by University of North Carolina Health Care

Citation: Atypical brain circuits may cause slower gaze shifting in infants who later develop autism (2013, March 20) retrieved 3 February 2024 from <https://medicalxpress.com/news/2013-03-atypical-brain-circuits-slower-shifting.html>

<p>This document is subject to copyright. Apart from any fair dealing for the purpose of private study or research, no part may be reproduced without the written permission. The content is provided for information purposes only.</p>
--