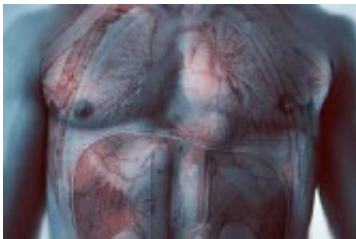


# CVD risk similar for metformin + insulin or sulfonylureas

July 20 2015

---



For patients with type 2 diabetes, the risk of myocardial infarction or stroke is similar for treatment with insulin or sulfonylureas in combination with metformin, according to a study published online July 14 in *Diabetes, Obesity and Metabolism*.

(HealthDay)—For patients with type 2 diabetes, the risk of myocardial infarction (MI) or stroke is similar for treatment with insulin or sulfonylureas in combination with metformin, according to a study published online July 14 in *Diabetes, Obesity and Metabolism*.

James S. Floyd, M.D., from the University of Washington in Seattle, and colleagues conducted a population-based case-control study to examine the risks of MI and stroke associated with sulfonylureas and insulin used in combination with [metformin](#). Cases had type 2 diabetes and used metformin plus insulin or sulfonylureas at the time of a first MI or stroke, while controls used the same treatment combinations and were sampled from the same population. Medical records were reviewed to validate MI and stroke diagnosis and potential confounders.

The researchers found that the risk of MI or stroke was similar for metformin + insulin and metformin + sulfonylureas (odds ratio, 0.98; 95 percent confidence interval, 0.63 to 1.52). The precision of the estimate was improved on meta-analysis with another observational study (relative risk, 0.92; 95 percent confidence interval, 0.69 to 1.42).

"Current evidence suggests that there may not be large differences in cardiovascular risk associated with the use of insulin or sulfonylureas when used in combination with metformin," the authors write.

One author disclosed [financial ties](#) to Zoll LifeCor and Johnson & Johnson.

**More information:** [Abstract](#)  
[Full Text \(subscription or payment may be required\)](#)

Copyright © 2015 [HealthDay](#). All rights reserved.

Citation: CVD risk similar for metformin + insulin or sulfonylureas (2015, July 20) retrieved 11 June 2024 from  
<https://medicalxpress.com/news/2015-07-cvd-similar-metformin-insulin-sulfonylureas.html>

|  |
|--|
| <p>This document is subject to copyright. Apart from any fair dealing for the purpose of private study or research, no part may be reproduced without the written permission. The content is provided for information purposes only.</p> |
|--|