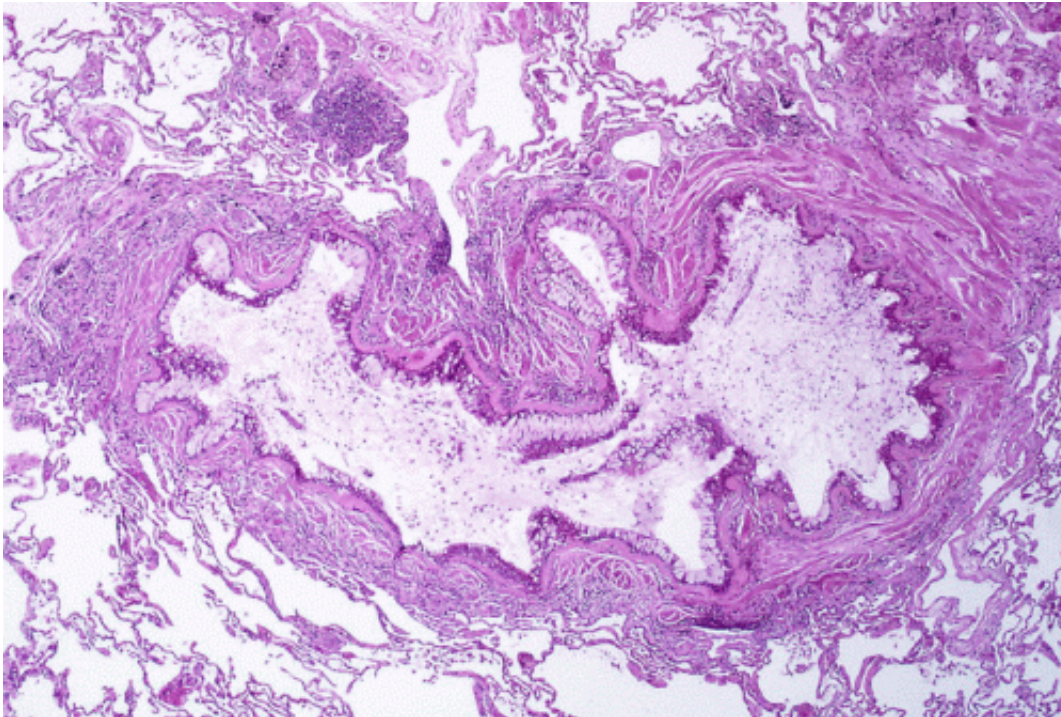


Exposure to wildfire smoke linked to increased ER visits for asthma

September 8 2015



Obstruction of the lumen of a bronchiole by mucoid exudate, goblet cell metaplasia, and epithelial basement membrane thickening in a person with asthma. Credit: Yale Rosen/Wikipedia/CC BY-SA 2.0

Researchers who analyzed data from the 2006-2007 wildfires in Australia found that exposure to wildfire smoke was linked to increased visits to hospital emergency departments for asthma.

The findings reveal the adverse health impacts due to [wildfire](#) particulate pollution in communities. These fine particulates are harmful because they are easily inhaled and remain present deep in the lungs.

"Given the increase in frequency and intensity of wildfires experienced worldwide in recent years, it's important to understand the impact of wildfire smoke exposure on acute health effects in the community," said Dr. Anjali Haikerwal, lead author of the *Respirology* study.

More information: Haikerwal, A., Akram, M., Sim, M. R., Meyer, M., Abramson, M. J. and Dennekamp, M. (2015), Fine particulate matter (PM2.5) exposure during a prolonged wildfire period and emergency department visits for asthma. *Respirology*. DOI: [10.1111/resp.12613](https://doi.org/10.1111/resp.12613)

Provided by Wiley

Citation: Exposure to wildfire smoke linked to increased ER visits for asthma (2015, September 8) retrieved 22 July 2023 from <https://medicalxpress.com/news/2015-09-exposure-wildfire-linked-er-asthma.html>

<p>This document is subject to copyright. Apart from any fair dealing for the purpose of private study or research, no part may be reproduced without the written permission. The content is provided for information purposes only.</p>
--