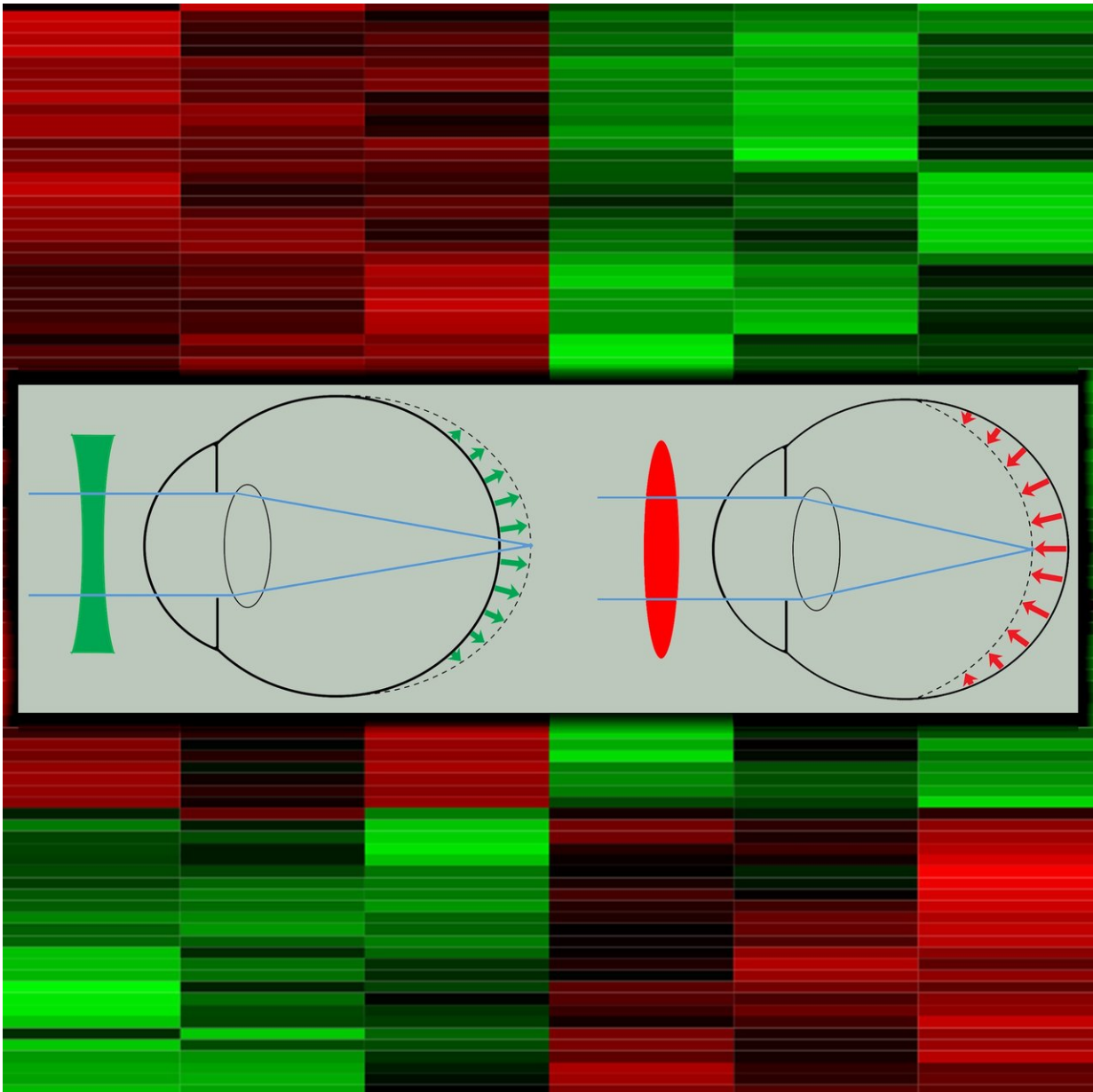


Gene changes driving myopia reveal new focus for drug development

October 9 2018



The effect of negative (green) and positive (red) lenses on eye growth and the heatmap depicting clusters of genes differentially expressed in the retina in response to optical defocus. Credit: Andrei V. Tkatchenko

Myopia (nearsightedness) and hyperopia (farsightedness) develop through different molecular pathways, according to a new study publishing October 9 in the open-access journal *PLOS Biology* by Andrei Tkatchenko of Columbia University and colleagues. The finding provides a new understanding of myopia, the most common form of visual impairment worldwide, and opens the way for development of drugs to prevent it.

Myopia occurs when the eye grows too long, increasing the distance between lens and [retina](#) such that the image produced by the lens comes into focus at a point in front of, rather than on, the retina. In [hyperopia](#), the opposite occurs; the eye is too short, and the focal point is behind the retina. While prolonged "nearwork" such as reading or sewing increases the risk of [myopia](#), neither the molecular pathways underlying its development, nor those driving hyperopia, are well known. Myopia is expected to affect nearly half the world's population in the next three decades.

To explore those pathways, the authors induced either myopia or hyperopia in marmosets, by placing lenses in front of their eyes. A lens that shifts the focal point to behind the retina ("hyperopic defocus") induces myopia, while one that shifts it to in front of the retina ("myopic defocus") induces hyperopia. In each case, the eye changes shape, elongating or shortening, to compensate by moving the retina closer to the [focal point](#).

When marmosets were exposed to defocus of either type in one eye for

up to 5 weeks, the activity of [genes](#) in the exposed retina changed compared to the non-exposed retina (used as a control). But the [molecular pathways](#) affected were for the most part different between the two types of defocus. While both types of defocus induced changes in important cellular signaling pathways, with the scores of genes affected in each case, only a small handful were affected by both types of defocus. There were also gene activity differences over time in each type, with little overlap between those affected within the first 10 days and those affected after 5 weeks. Importantly, the authors found that 29 of the genes whose activity changed in response to defocus were localized within chromosomal regions (called quantitative trait loci) previously associated with human myopia in large-scale genetic studies, suggesting that variations in the expression of genes involved in the normal regulation of eye shape in response to defocus contribute to nearsightedness.

"The results of this study show that the retina can distinguish between myopic and hyperopic defocus and responds to defocus of opposite signs by activating largely distinct pathways," Tkatchenko said. "Identification of these pathways provides a framework for the identification of new drug targets and for the development of more effective treatment options for myopia."

More information: Tatiana V. Tkatchenko et al, Gene expression in response to optical defocus of opposite signs reveals bidirectional mechanism of visually guided eye growth, *PLoS Biology* (2018). [DOI: 10.1371/journal.pbio.2006021](https://doi.org/10.1371/journal.pbio.2006021)

Provided by Public Library of Science

Citation: Gene changes driving myopia reveal new focus for drug development (2018, October 9)

retrieved 18 November 2023 from

<https://medicalxpress.com/news/2018-10-gene-myopia-reveal-focus-drug.html>

This document is subject to copyright. Apart from any fair dealing for the purpose of private study or research, no part may be reproduced without the written permission. The content is provided for information purposes only.