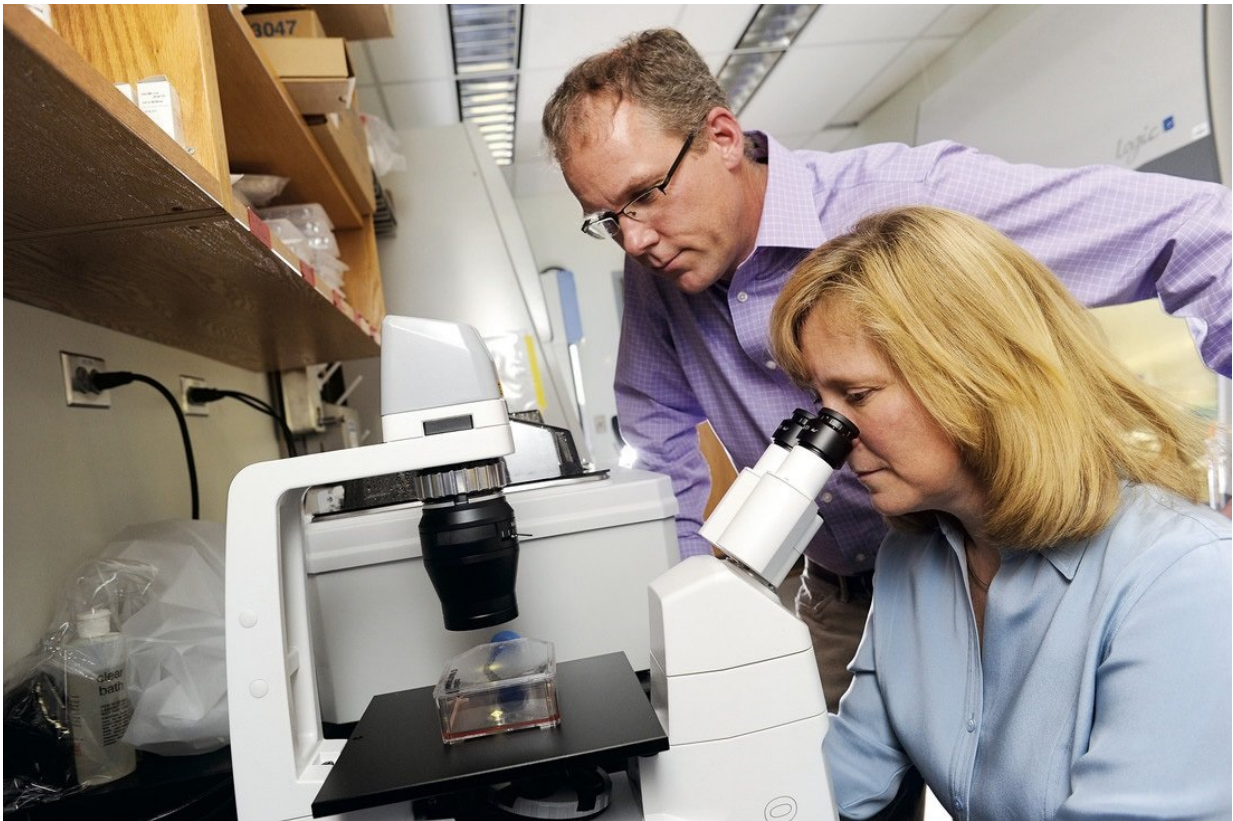


Memory B cells in the lung may be important for more effective influenza vaccinations

December 5 2018, by Jeff Hansen



Troy Randall and Frances Lund. Credit: UAB

Seasonal influenza vaccines are typically less than 50 percent effective, according to Centers for Disease Control and Prevention studies. Research at the University of Alabama at Birmingham, published this

week in *Nature Immunology*, may point a path to more effective vaccines.

Researchers led by Troy Randall, Ph.D., professor in the UAB Department of Medicine's Division of Clinical Immunology and Rheumatology, studied a type of immune cell in the [lung](#) called a resident memory B cell. Up to now, it had not been clear if these [cells](#) might be useful to combat influenza infections or even if they existed at all.

Using a mouse model of influenza and experiments that included parabiosis—the linking of the blood circulatory systems between two mice—Randall and colleagues definitively showed that lung-resident memory B cells establish themselves in the lung soon after influenza [infection](#). Those lung-resident memory B cells responded more quickly to produce antibodies against influenza after a second infection, as compared to the response by the circulating memory B cells in lymphoid tissue. The UAB [researchers](#) also found that establishment of the lung-resident memory B cells required a local antigen encounter in the lung.

"These data demonstrate that lung-resident memory B cells are an important component of immunity to respiratory viruses like influenza," Randall said. "They also suggest that vaccines designed to elicit highly effective, long-lived protection against influenza virus infection will need to deliver antigens to the respiratory tract."

B cells, or B lymphocytes, are a class of white blood cells that can develop into antibody-secreting [plasma cells](#) or into dormant memory B cells. Specific antibodies produced by the infection-fighting plasma cells help neutralize or destroy viral or bacterial pathogens. Memory B cells "remember" a previous infection and are able to respond more quickly to a second infection by the same pathogen, and thus are part of durable immunity.

The UAB researchers showed that the lung-resident memory B cells do not recirculate throughout the body after establishment in the lungs. They also showed that the lung-resident memory B cells had a different phenotype, as measured by cell surface markers, than the systemic memory B cells found in lymphoid tissue. The lung-resident memory B cells uniformly expressed the chemokine receptor, CXCR3, and they completely lacked the lymph node homing receptor, CD62L.

The crucial experiments to show that the non-circulating, influenza-specific memory B cells permanently resided in the lung involved parabiosis. A mouse of one strain was infected with influenza, then surgically connected with a different strain mouse six weeks later. After two weeks with a shared blood circulation, naïve B cells in the mediastinal [lymph nodes](#) and the spleens of both mice had equilibrated evenly among the two mice; but the memory B cells remained in the previously infected lung and did not migrate to the naïve lung.

Similar experiments of this type showed that inflammation in the naïve lung did not induce the lung memory cells to migrate to the inflamed naïve lung, and if each animal was infected with different strains of influenza, and then paired, the memory B cells for each strain of influenza remained in the lungs infected with that strain. The researchers also found—by shortening the time between infection and pairing—that the lung-resident memory B cells were established within two weeks of [influenza](#) infection.

More information: S. Rameeza Allie et al, The establishment of resident memory B cells in the lung requires local antigen encounter, *Nature Immunology* (2018). [DOI: 10.1038/s41590-018-0260-6](https://doi.org/10.1038/s41590-018-0260-6)

Provided by University of Alabama at Birmingham

Citation: Memory B cells in the lung may be important for more effective influenza vaccinations (2018, December 5) retrieved 3 February 2024 from

<https://medicalxpress.com/news/2018-12-memory-cells-lung-important-effective.html>

This document is subject to copyright. Apart from any fair dealing for the purpose of private study or research, no part may be reproduced without the written permission. The content is provided for information purposes only.