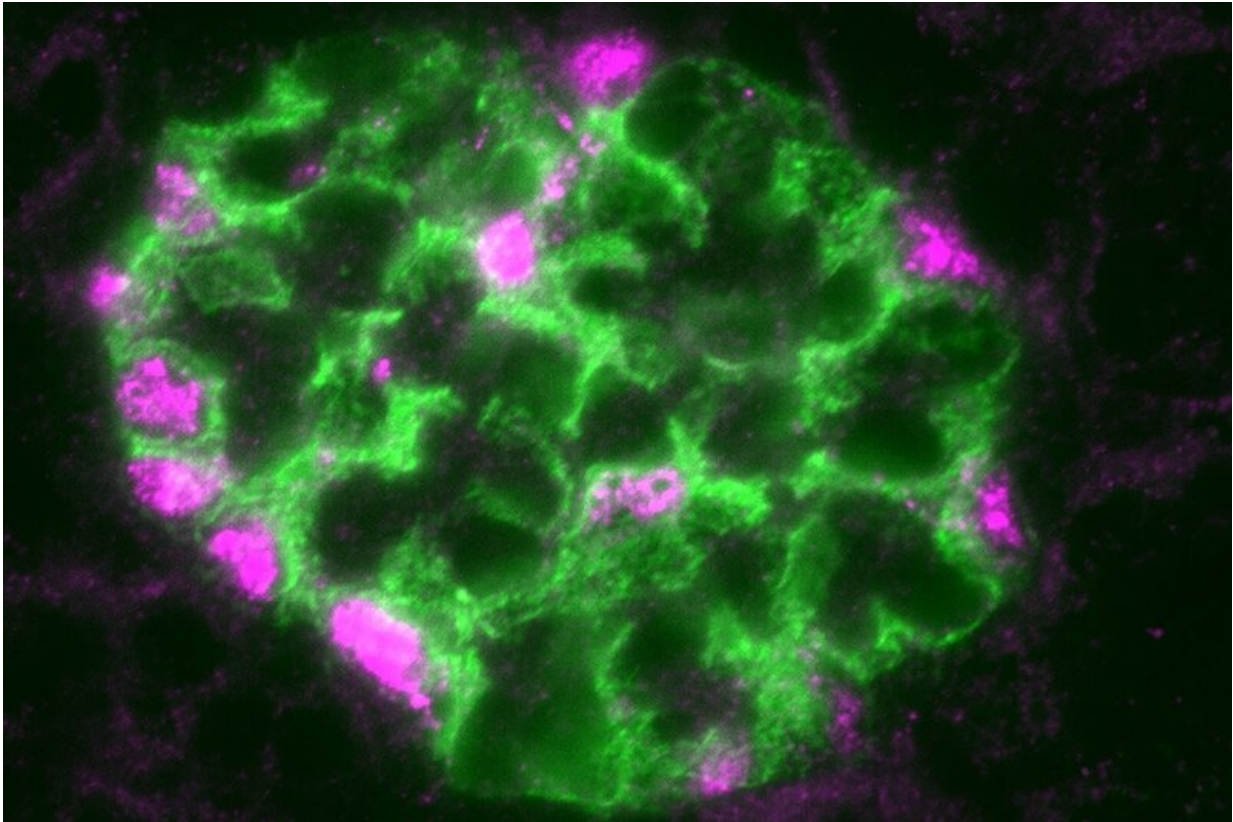


A master regulator of kidney health?

September 7 2020, by Nancy Fliesler



A magnified view of the glomerulus, the filtration unit of the kidney. Wilms' tumor-1 (WT-1), a protein that regulates filtration, is shown in pink. Nephrin, a protein that is a crucial part of the filter, is shown in green. Credit: Sandrine Ettou, PhD, Boston Children's

End-stage kidney disease often begins with injury to podocytes. These highly specialized cells are a critical part of the glomeruli, clusters of

capillaries that serve as the filtration units in our kidneys' tightly-packed nephrons. As their name suggests, podocytes extend tiny foot processes to intermingle with the capillaries and filter the blood, maintaining the proper water and salt balance.

In many kidney diseases, the foot processes become damaged and the podocytes themselves detach from the capillaries. The resulting loss of filtration capacity can be life threatening. More than 100,000 Americans end up on dialysis each year for lack of any other [effective treatment](#). African Americans are disproportionately affected.

The lab of Jordan Kreidberg, MD, Ph.D., in the Boston Children's Hospital departments of urology and nephrology, has been trying to understand how kidneys and podocytes naturally maintain themselves. In a study today in *Science Advances*, the team describes a master genetic program that seems to orchestrate podocytes' innate injury-repair response.

"Understanding this network of genes is a major step towards identifying pathways that might be targeted therapeutically," says Kreidberg.

At the heart of the network is a protein called Wilms tumor-1 (WT-1). Known as a transcription factor, WT-1 interacts with multiple genes, regulating which transcribe their DNA and are therefore expressed or turned "on." (Kreidberg and his colleagues previously showed that if you knock out WT-1 in a mouse, the kidneys never develop.)



Credit: AI-generated image ([disclaimer](#))

A natural repair program for podocytes

Kreidberg's team worked with two models to learn what happens genetically after [podocyte](#) injury: a mouse model and human kidney organoids with mini-nephrons, created from stem cells.

They found that, after injury, WT-1 levels rose. This led to activation of other [transcription factors](#) and changes in the expression of multiple genes known to be important in maintaining the kidney's filtration barrier. (Included is the gene for nephrin, shown above.) Of the more than 1,200 [genes](#) that WT-1 bound to, 223 at least doubled their [expression levels](#).

"Unfortunately, and for reasons we don't yet fully understand, expression

of WT-1 ultimately decreases, and you end up with poorly functioning kidneys," says Kreidberg. "Our studies don't yet point to a particular target, but if there were a way to sustain WT-1 expression, we envision that this might protect podocytes and avoid kidney failure."

Kreidberg and his colleagues continue to study WT-1 and other transcription factors involved in the podocyte repair process. While there aren't yet specific targets for drugs, the investigations could potentially lead to better treatments for focal segmental glomerulosclerosis (FSGS), a severe form of nephrotic syndrome, as well as kidney failure due to diabetes or hypertension, Kreidberg says.

A rare and hard-to-study cell

The study also marks a significant technical accomplishment.

"It's only in the last few years that we've been able to get podocytes out of the glomerulus and do gene expression studies on them," Kreidberg notes. "Glomeruli make up just 1 percent of the mass of the [kidney](#)."

More information: Sandrine Ettou et al. Epigenetic transcriptional reprogramming by WT1 mediates a repair response during podocyte injury, *Science Advances* (2020). [DOI: 10.1126/sciadv.abb5460](https://doi.org/10.1126/sciadv.abb5460)

Provided by Children's Hospital Boston

Citation: A master regulator of kidney health? (2020, September 7) retrieved 5 February 2024 from <https://medicalxpress.com/news/2020-09-master-kidney-health.html>

This document is subject to copyright. Apart from any fair dealing for the purpose of private study or research, no part may be reproduced without the written permission. The content is

provided for information purposes only.