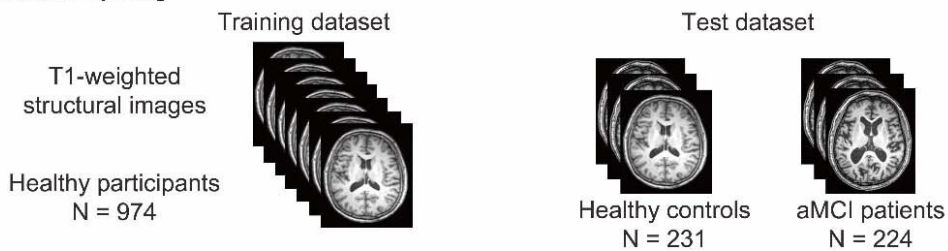


Using AI to track cognitive deviation in aging brains

June 23 2021

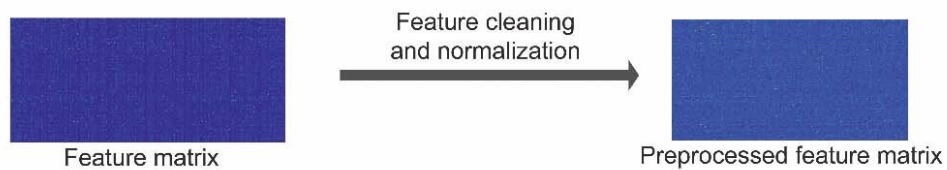
A. Dataset splitting



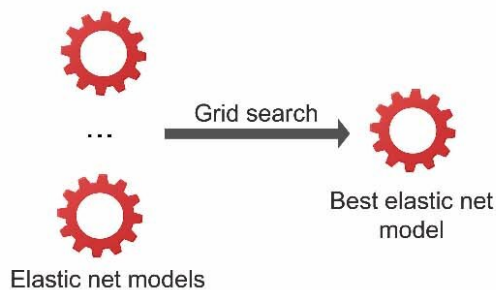
B. Image preprocessing



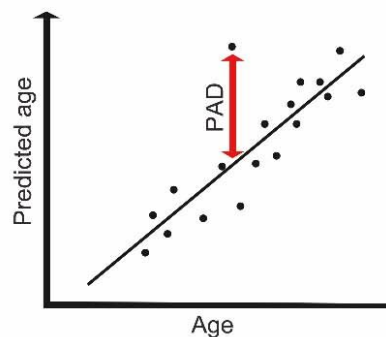
C. Feature preprocessing



D. Supervised learning in training dataset



E. Age prediction in test dataset



Flowchart showing the framework of the brain age prediction model. A, The imaging data were split into training and test datasets. The training dataset consisted of structural magnetic resonance imaging data from 974 healthy individuals, whereas the test dataset included data from 2 groups, 231 healthy controls and 224 aMCI subjects. B, A Conventional Statistical Parametric Mapping structural preprocessing pipeline was used to generate GMV maps in the MNI space. C, The intensity values from the GMV maps were extracted and concatenated to create a feature matrix that was then cleaned and normalized. D, The best elastic net model was obtained by performing supervised learning on the training dataset. To optimize the hyperparameters, a grid search was performed. E, The test dataset was input into the trained model. An age was predicted for every participant included in the test dataset. The PAD scores were calculated by subtracting the participant's chronological age from his or her predicted age. aMCI = amnesic mild cognitive impairment, GMV = gray matter volume, MNI = Montreal Neurologic Institute, Dartel = Diffeomorphic Anatomic Registrations Through Exponentiated Lie Algebra, PAD = predicted age difference. Credit: Radiological Society of North America

Researchers have developed an artificial intelligence (AI)-based brain age prediction model to quantify deviations from a healthy brain-aging trajectory in patients with mild cognitive impairment, according to a study published in *Radiology: Artificial Intelligence*. The model has the potential to aid in early detection of cognitive impairment at an individual level.

Amnesic [mild cognitive impairment](#) (aMCI) is a transition phase from normal aging to Alzheimer's disease (AD). People with aMCI have memory deficits that are more serious than normal for their age and education, but not severe enough to affect daily function.

For the study, Ni Shu, Ph.D., from State Key Laboratory of Cognitive

Neuroscience and Learning, Beijing Normal University, in Beijing, China, and colleagues used a machine learning approach to train a brain age prediction [model](#) based on the T1-weighted MR images of 974 [healthy adults](#) aged from 49.3 to 95.4 years. The trained model was applied to estimate the predicted age difference (predicted age vs. actual age) of aMCI patients in the Beijing Aging Brain Rejuvenation Initiative (616 healthy controls and 80 aMCI patients) and the Alzheimer's Disease Neuroimaging Initiative (589 healthy controls and 144 aMCI patients) datasets.

The researchers also examined the associations between the predicted age difference and [cognitive impairment](#), genetic risk factors, pathological biomarkers of AD, and clinical progression in aMCI patients.

The results showed that aMCI patients had brain-aging trajectories distinct from the typical normal aging trajectory, and the proposed brain age prediction model could quantify individual deviations from the typical normal aging trajectory in these patients. The predicted age difference was significantly associated with individual cognitive impairment of aMCI patients in several domains, specifically including memory, attention and executive function.

"The predictive model we generated was highly accurate at estimating chronological age in healthy participants based on only the appearance of MRI scans," the researchers wrote. "In contrast, for aMCI, the model estimated brain age to be greater than 2.7 years older on average than the patient's chronological age."

The model further showed that progressive aMCI patients exhibit more deviations from typical normal aging than stable aMCI patients, and the use of the predicted age difference score along with other AD-specific biomarkers could better predict the progression of aMCI.

Apolipoprotein E (APOE) ϵ 4 carriers showed larger predicted age differences than non-carriers, and amyloid-positive patients showed larger predicted age differences than amyloid-negative patients.

Combining the predicted age difference with other biomarkers of AD showed the best performance in differentiating progressive aMCI from stable aMCI.

"This work indicates that predicted age difference has the potential to be a robust, reliable and computerized biomarker for early diagnosis of cognitive impairment and monitoring response to treatment," the authors concluded.

More information: Heang-Ping Chan, Promise and Potential Pitfalls: Re-creating Images or Generating New Images for AI Modeling, *Radiology: Artificial Intelligence* (2021). [DOI: 10.1148/ryai.2021210102](https://doi.org/10.1148/ryai.2021210102)

Provided by Radiological Society of North America

Citation: Using AI to track cognitive deviation in aging brains (2021, June 23) retrieved 3 February 2024 from <https://medicalxpress.com/news/2021-06-ai-track-cognitive-deviation-aging.html>

This document is subject to copyright. Apart from any fair dealing for the purpose of private study or research, no part may be reproduced without the written permission. The content is provided for information purposes only.