

Researchers identify new biomarker of Alzheimer's disease

November 19 2021

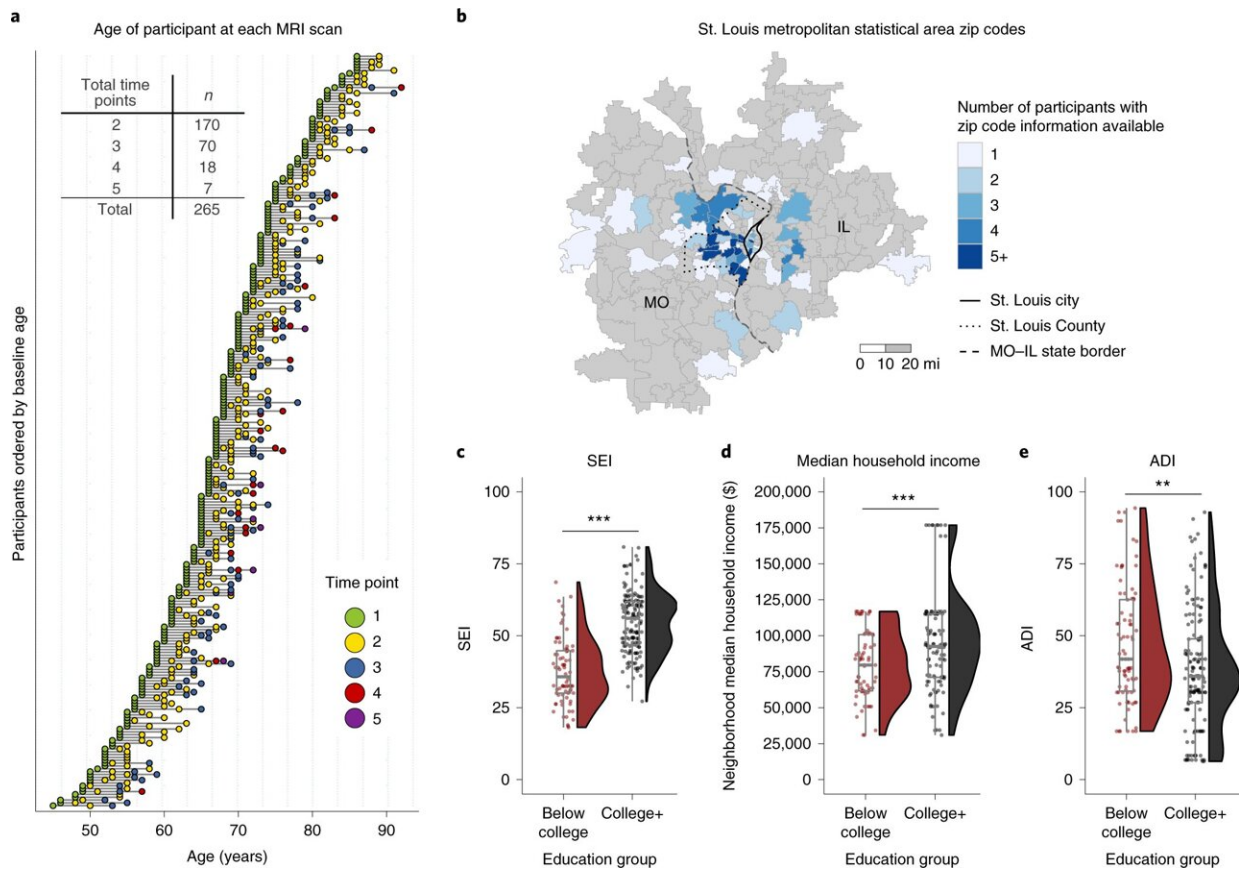


Fig. 1: Longitudinal MRI sessions and geographical and SES-related information of participants. a, Every participant had at least two MRI (including resting-state) scan sessions, with 36% of participants having three to five separate sessions over multiple years (maximum range, 9.2 years). b, Number of participants from zip codes within the St. Louis metropolitan statistical area. The border of the city of St. Louis (solid), the county of St. Louis (dotted) and the state border between Missouri (MO) and Illinois (IL; dashed) are also depicted. c, Participants with a

college degree have higher socioeconomic index (SEI) (data are available for 86% (n = 228) of participants; $t_{132} = -10.791$, P

Citation: Researchers identify new biomarker of Alzheimer's disease (2021, November 19)
retrieved 5 February 2024 from
<https://medicalxpress.com/news/2021-11-biomarker-alzheimer-disease.html>

This document is subject to copyright. Apart from any fair dealing for the purpose of private study or research, no part may be reproduced without the written permission. The content is provided for information purposes only.