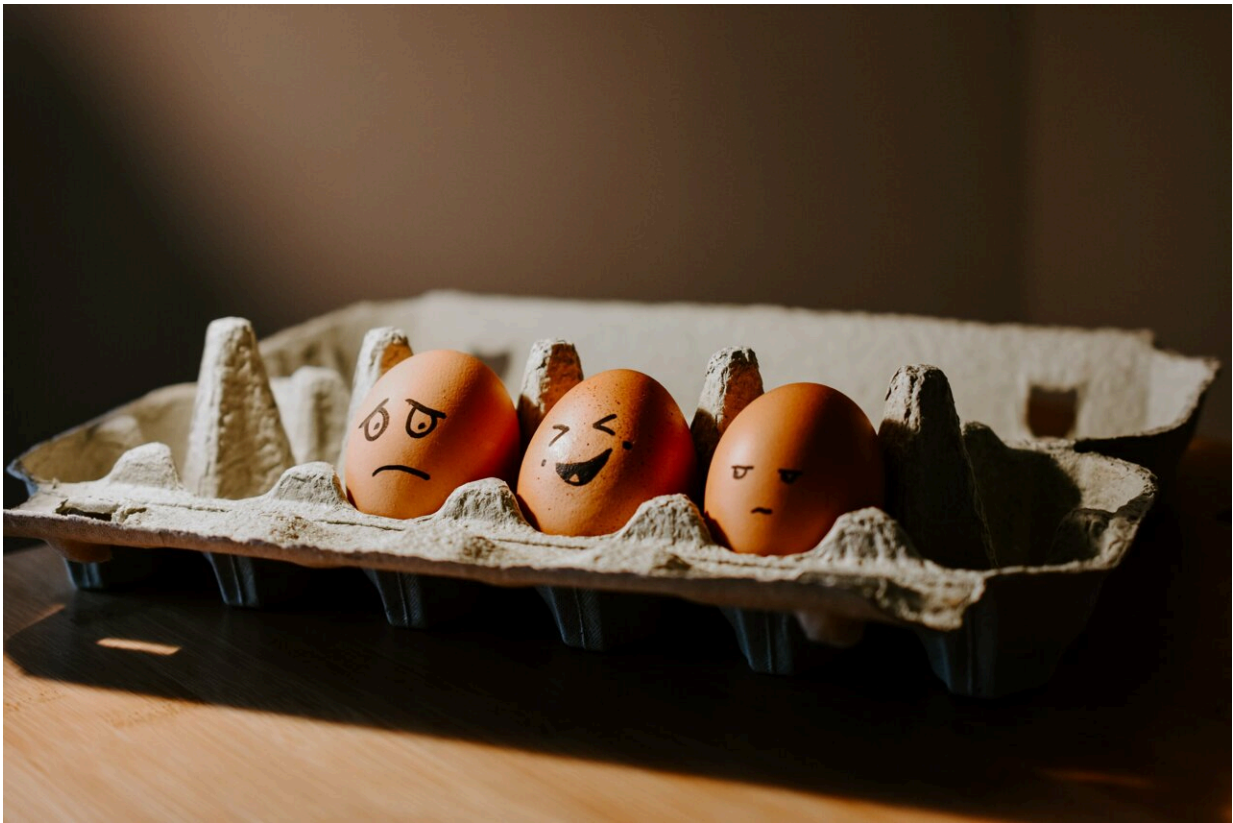


# Theta waves: A marker of emotional regulation

June 23 2022, by Martin Lasalle

---



Credit: Unsplash/CC0 Public Domain

Without realizing it, we all rely on emotional regulation many times a day. It's the process by which we mitigate the effect of disturbing stimuli in order to stay focused, improve our well-being and respond to demands

from our environment.

Emotional regulation plays a key role in many [mental illnesses](#) and their treatment, including anxiety, mood disorders and borderline personality disorder.

Now Inès Zouaoui, a master's student in psychology supervised by Professor Marc Lavoie at the Research Center of the Montreal Mental Health University Institute, has demonstrated that emotional regulation is associated with the action of [theta waves](#) in a specific part of the brain, the [frontal cortex](#). Zouaoui is set to start her Ph.D. in [biomedical science](#), psychiatry option, at UdeM this fall.

### **A brain wave specific to emotional regulation**

Building on the results of [a 2013 study](#) that showed theta waves are generated during emotional regulation, the Montreal research team gave 24 subjects a cognitive reappraisal exercise.

"We used cognitive reappraisal, which basically involves re-interpreting the meaning of a situation, to carry out an experimental study of emotional regulation," explained Zouaoui. "Our goal was to decipher the electrocortical mechanisms that accompany this complex process."

They attached electrodes to the scalps of the 10 men and 14 women to record the [electrical activity](#) in their brains in response to upsetting images, such as a man armed with a knife or a threatening dog.

While their [brain activity](#) was being continuously measured and recorded using electroencephalography, the subjects were instructed to either increase, decrease or maintain their feelings of aversion, depending on what group they were assigned to. This step also involved cognitive reappraisal. After a few seconds, the image disappeared and the

emotional regulation phase ended.

"We performed more detailed analyses of the encephalograms than what was done in the previous study to measure the frequencies of the brain waves generated during cognitive reappraisal and found only theta waves, which oscillate between 4 and 8 Hz," Zouaoui reported. "So theta waves can be considered a marker of emotional regulation.

"What's new about our study is that by comparing the emotional induction and emotional regulation phases, we were able to show that theta waves are specific to the regulation phase," said Zouaoui. "We also looked for alpha waves, which are in the 8 to 13 Hz range, to see if theta waves are specific to emotional regulation and found that alpha waves are not sensitive to either emotional induction or emotional regulation."

The use of electrodes also enabled the research team to pinpoint the precise region of the [brain](#) responsible for generating the theta waves: the frontal regions involved in cognitive control.

### **New treatment options**

Zouaoui's goal wasn't just to build on a previous study and add to the [scientific literature](#); she hopes her experiment can one day be used to support clinical practice. "Since theta waves can be a marker of successful emotional regulation, this could lead to new treatment options for people whose [emotional regulation](#) process is perturbed, which is the case in severe anxiety and schizophrenia, for example."

Provided by University of Montreal

Citation: Theta waves: A marker of emotional regulation (2022, June 23) retrieved 2 May 2023 from <https://medicalxpress.com/news/2022-06-theta-marker-emotional.html>

This document is subject to copyright. Apart from any fair dealing for the purpose of private study or research, no part may be reproduced without the written permission. The content is provided for information purposes only.