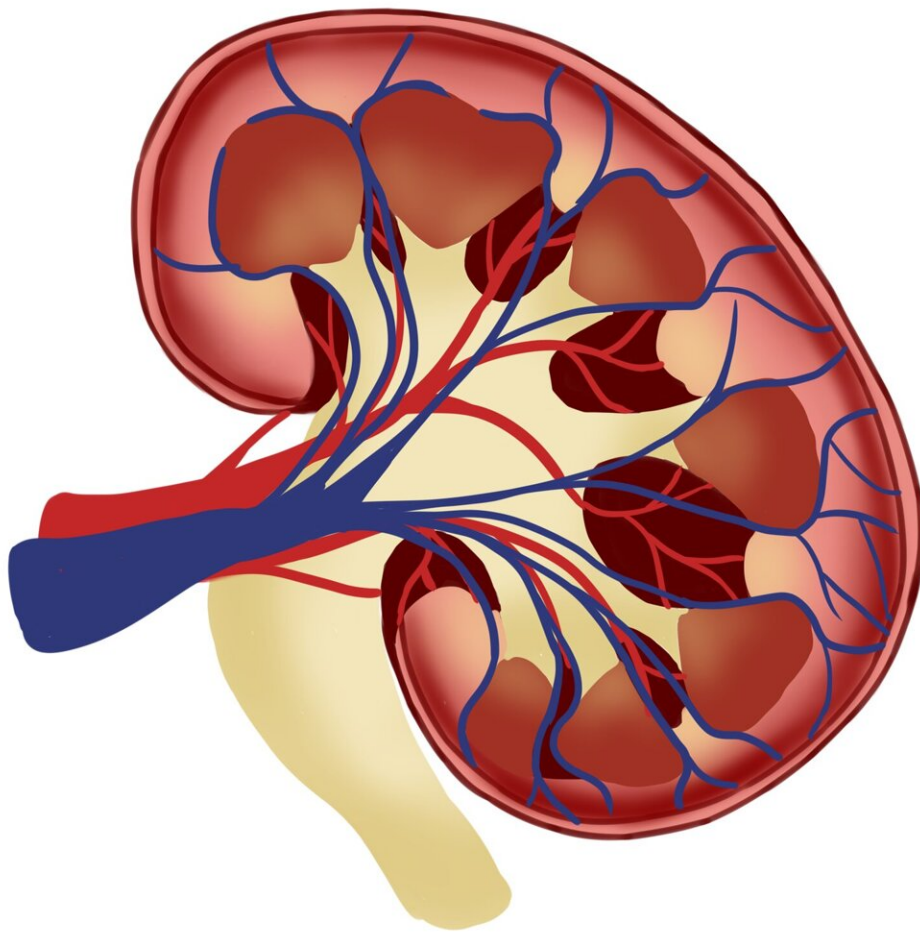


# Invasive strategy does not improve survival in kidney disease patients with ischemia

August 29 2022

---



Credit: Pixabay/CC0 Public Domain

In patients with advanced chronic kidney disease and chronic coronary disease, an invasive strategy does not reduce the five-year risk of death compared to a conservative strategy. That's the finding of late breaking research presented in [a Hot Line session](#) on 29 August at ESC Congress 2022.

Previous trials of an invasive versus conservative strategy for the management of chronic coronary disease have excluded patients with [advanced chronic kidney disease](#) or included only a small proportion of these patients. Therefore, the optimal management of this high risk group of patients is unknown.

The primary results of the ISCHEMIA-CKD trial have been previously reported. The trial enrolled 777 patients with advanced chronic kidney disease (defined as estimated [glomerular filtration rate](#)

Citation: Invasive strategy does not improve survival in kidney disease patients with ischemia (2022, August 29) retrieved 19 December 2023 from <https://medicalxpress.com/news/2022-08-invasive-strategy-survival-kidney-disease.html>

<p>This document is subject to copyright. Apart from any fair dealing for the purpose of private study or research, no part may be reproduced without the written permission. The content is provided for information purposes only.</p>
--