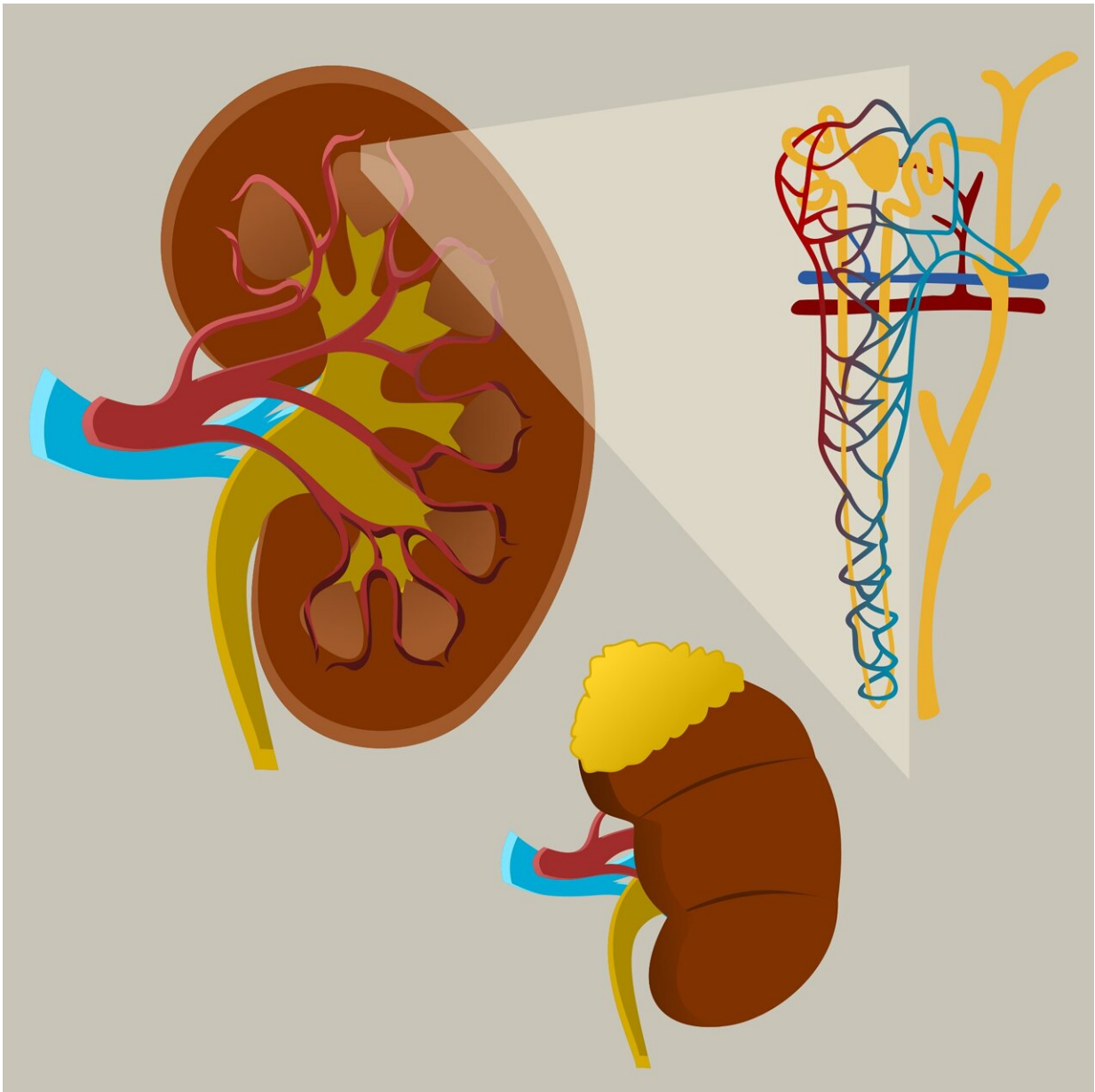


# Analysis links impaired kidney function with cognitive disorders

November 3 2022

---



Credit: Pixabay/CC0 Public Domain

New research has demonstrated a link between kidney disease and the development of cognitive problems. The findings will be presented at ASN Kidney Week 2022 November 3–6.

The study relied on data from the population-based Framingham Heart Study. Among 2,738 participants without dementia, 187 (7%) had [chronic kidney disease](#) and 251 (9%) had albuminuria, a urinary marker of kidney disease. Albuminuria was associated with signs of silent stroke, and patients with albuminuria had a 65% higher risk of developing [mild cognitive impairment](#) or dementia. Chronic [kidney disease](#) was not associated with markers of silent cerebrovascular disease but was associated with a 51% higher risk of developing dementia.

"Our results highlight the importance of albuminuria as a cerebrovascular and cognitive risk factor and indicate that there may be additional shared disease mechanisms in the kidney and the brain beyond hypertension," said corresponding author Dearbhla Kelly, MBBChBAO, MSc, DPhil, of St. James's Hospital, Dublin, Ireland.

**More information:** Conference Abstract: [Associations of Impaired Kidney Function with Cerebral Small Vessel Disease and Cognitive Disorders: Findings from the Framingham Heart Study](#)

Provided by American Society of Nephrology

Citation: Analysis links impaired kidney function with cognitive disorders (2022, November 3) retrieved 5 February 2024 from

<https://medicalxpress.com/news/2022-11-analysis-links-impaired-kidney-function.html>

This document is subject to copyright. Apart from any fair dealing for the purpose of private study or research, no part may be reproduced without the written permission. The content is provided for information purposes only.