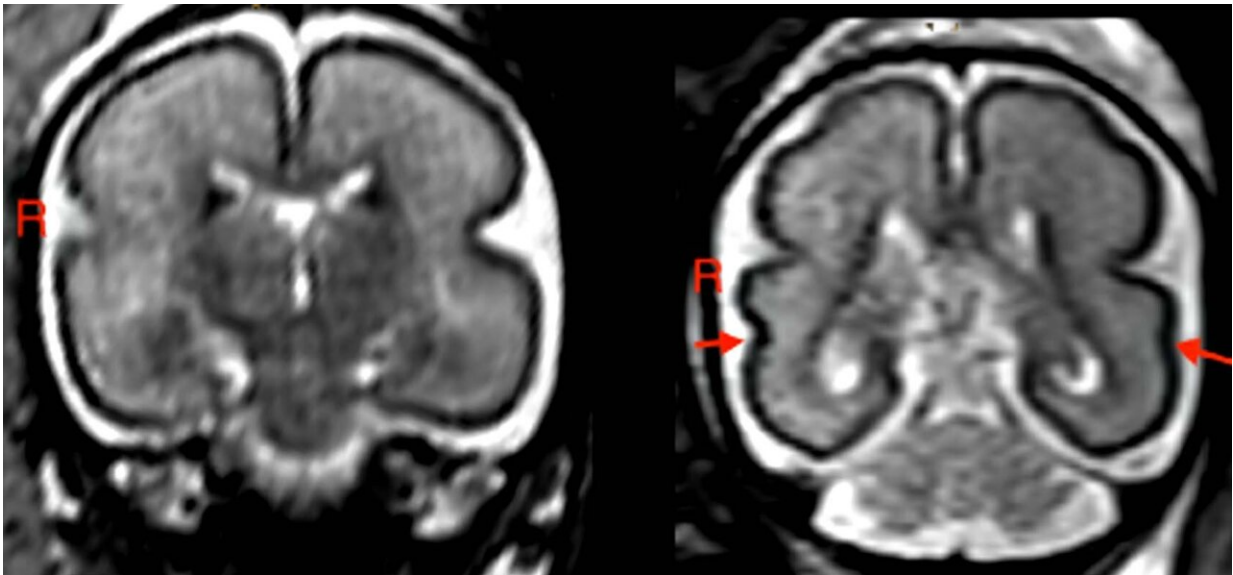


Drinking during pregnancy changes baby's brain structure

November 22 2022



Left: Fetal brain post-intrauterine alcohol exposure in fetus between 25 and 29 gestational weeks. Note the smooth cortex in frontoparietal and temporal lobes. Right: Brain of matched healthy control case in fetus between 25 and 28 gestational weeks. The superior temporal sulcus is already bilaterally formed (red arrows) and appears deeper on the right hemisphere than on the left. Credit: RSNA and Patric Kienast, M.D.

A new MRI study revealed that consumption of alcohol even in low to moderate amounts during pregnancy can change the baby's brain structure and delay brain development. Results of the study will be

presented next week at the annual meeting of the Radiological Society of North America (RSNA).

"Fetal MRI is a highly specialized and safe examination method that allows us to make accurate statements about [brain maturation](#) prenatally," said study senior author Gregor Kasprian, M.D., associate professor of radiology from the Department of Biomedical Imaging and Image-guided Therapy of the Medical University of Vienna in Austria.

Alcohol consumption during pregnancy can expose the [fetus](#) to a group of conditions called [fetal alcohol spectrum disorders](#). Babies born with fetal [alcohol](#) spectrum disorders could develop learning disabilities, behavioral problems or speech and language delays.

"Unfortunately, many [pregnant women](#) are unaware of the influence of alcohol on the fetus during pregnancy," said lead author Patric Kienast, M.D., a Ph.D. student in the Department of Biomedical Imaging and Image-Guided Therapy, Division of Neuroradiology and Musculoskeletal Radiology at the Medical University of Vienna.

"Therefore, it is our responsibility not only to do the research but also to actively educate the public about the effects of alcohol on the fetus."

For the study, researchers analyzed MRI exams of 24 fetuses with [prenatal alcohol exposure](#). The fetuses were between 22 and 36 weeks of gestation at the time of MRI. Alcohol exposure was determined via anonymous surveys of the mothers. The questionnaires used were the Pregnancy Risk Assessment Monitoring System (PRAMS), a surveillance project of the Centers for Disease Control and Prevention and health departments, and the T-ACE Screening Tool, a measurement tool of four questions that identify risk drinking.

In fetuses with alcohol exposure, the fetal total maturation score (fTMS) was significantly lower than in the age-matched controls, and the right

superior temporal sulcus (STS) was shallower. The STS is involved in social cognition, audiovisual integration and language perception.

"We found the greatest changes in the temporal [brain](#) region and STS," Dr. Kasprian said. "We know that this region, and specifically the formation of the STS, has a great influence on language development during childhood."

Brain changes were seen in the fetuses even at low levels of alcohol exposure.

"Seventeen of 24 mothers drank alcohol relatively infrequently, with average alcohol consumption of less than one [alcoholic drink](#) per week," Dr. Kienast said. "Nevertheless, we were able to detect significant changes in these fetuses based on prenatal MRI."

Three mothers drank one to three drinks per week, and two mothers drank four to six drinks per week. One mother consumed an average of 14 or more drinks per week. Six mothers also reported at least one binge drinking event (exceeding four drinks on one occasion) during pregnancy.

According to the researchers, delayed fetal brain development could be specifically related to a delayed stage of myelination and less distinct gyrification in the frontal and occipital lobes.

The myelination process is critical to brain and nervous system function. Myelin protects nerve cells, allowing them to transmit information faster. Important developmental milestones in infants, as rolling over, crawling and language processing are directly linked to myelination.

Gyrification refers to the formation of the folds of the cerebral cortex. This folding enlarges the surface area of the cortex with limited space in

the skull, enabling an increase in cognitive performance. When gyrification is diminished, functionality is reduced.

"Pregnant women should strictly avoid alcohol consumption," Dr. Kienast said. "As we show in our study, even low levels of [alcohol consumption](#) can lead to structural changes in brain development and delayed brain maturation."

It is unclear how these structural changes will affect brain development in these babies after birth.

"To assess this accurately, we need to wait for the children who were examined as fetuses at that time to get a little older, so that we can invite them back for further examinations," Dr. Kienast said. "However, we can strongly assume that the changes we discovered contribute to the cognitive and behavioral difficulties that may occur during childhood."

More information: Conference: www.rsna.org/annual-meeting

Provided by Radiological Society of North America

Citation: Drinking during pregnancy changes baby's brain structure (2022, November 22) retrieved 27 February 2023 from <https://medicalxpress.com/news/2022-11-pregnancy-baby-brain.html>

<p>This document is subject to copyright. Apart from any fair dealing for the purpose of private study or research, no part may be reproduced without the written permission. The content is provided for information purposes only.</p>
--