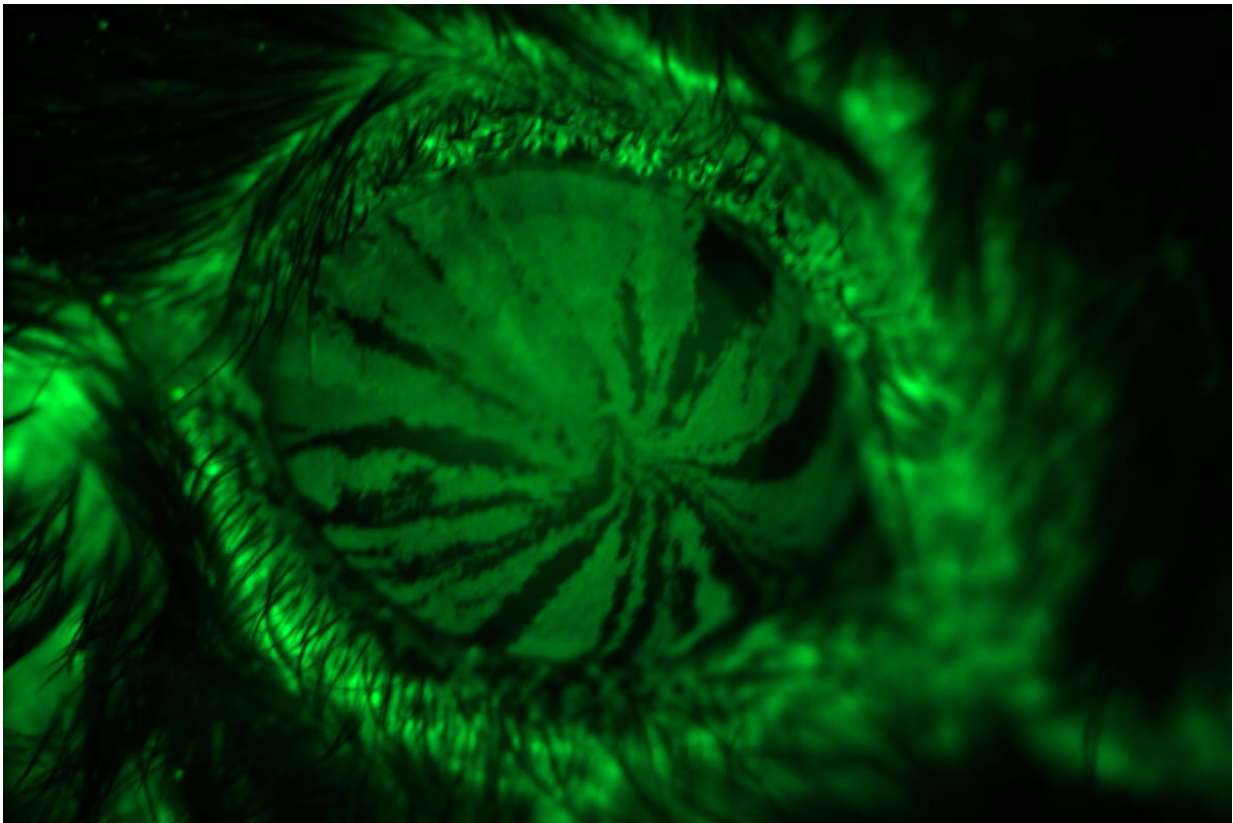


# Dry eye disease alters how the eye's cornea heals itself after injury

January 2 2023

---



Studying mice, researchers at Washington University School of Medicine in St. Louis have found that proteins made by stem cells to help regenerate the cornea may become new targets for treating and preventing injuries to the cornea related to dry eye disease. When eyes are dry, the cornea is more susceptible to injury. By tracking the movements of stem cells (in fluorescent green) in a mouse eye, researchers were able to trace the cells as they differentiated into corneal cells and migrated to the center of the cornea, providing clues about how the cells work to help corneal injuries heal. Credit: Washington University

People with a condition known as dry eye disease are more likely than those with healthy eyes to suffer injuries to their corneas. Studying mice, researchers at Washington University School of Medicine in St. Louis have found that proteins made by stem cells that regenerate the cornea may be new targets for treating and preventing such injuries.

The study is published online Jan. 2 in the *Proceedings of the National Academy of Sciences*.

Dry eye disease occurs when the eye can't provide adequate lubrication with natural tears. People with the common disorder use various types of drops to replace missing natural tears and keep the eyes lubricated, but when eyes are dry, the cornea is more susceptible to injury.

"We have drugs, but they only work well in about 10% to 15% of patients," said senior investigator Rajendra S. Apte, MD, Ph.D., the Paul A. Cibis Distinguished Professor in the John F. Hardesty, MD, Department of Ophthalmology & Visual Sciences.

"In this study involving [genes](#) that are key to eye health, we identified potential targets for treatment that appear different in dry eyes than in healthy eyes. Tens of millions of people around the world—with an estimated 15 million in the United States alone—endure eye pain and blurred vision as a result of complications and injury associated with dry eye disease, and by targeting these proteins, we may be able to more successfully treat or even prevent those injuries."

The researchers analyzed genes expressed by the cornea in several mouse models—not only of dry eye disease, but also of diabetes and other

conditions. They found that in [mice](#) with dry eye disease, the cornea activated expression of the gene SPARC. They also found that higher levels of SPARC [protein](#) were associated with better healing.

"We conducted single-cell RNA sequencing to identify genes important to maintaining the health of the cornea, and we believe that a few of them, particularly SPARC, may provide potential therapeutic targets for treating [dry eye disease](#) and corneal injury," said first author Joseph B. Lin, an MD/Ph.D. student in Apte's lab.

"These [stem cells](#) are important and resilient and a key reason [corneal transplantation](#) works so well," Apte explained. "If the proteins we've identified don't pan out as therapies to activate these cells in people with dry eye syndrome, we may even be able to transplant engineered limbal stem cells to prevent corneal injury in patients with dry eyes."

**More information:** Lin, Joseph B. et al, Dry eye disease in mice activates adaptive corneal epithelial regeneration distinct from constitutive renewal in homeostasis, *Proceedings of the National Academy of Sciences* (2023). [DOI: 10.1073/pnas.2204134120](https://doi.org/10.1073/pnas.2204134120). [doi.org/10.1073/pnas.2204134120](https://doi.org/10.1073/pnas.2204134120)

Provided by Washington University School of Medicine

Citation: Dry eye disease alters how the eye's cornea heals itself after injury (2023, January 2) retrieved 3 April 2023 from <https://medicalxpress.com/news/2022-12-dry-eye-disease-cornea-injury.html>

This document is subject to copyright. Apart from any fair dealing for the purpose of private study or research, no part may be reproduced without the written permission. The content is provided for information purposes only.
---