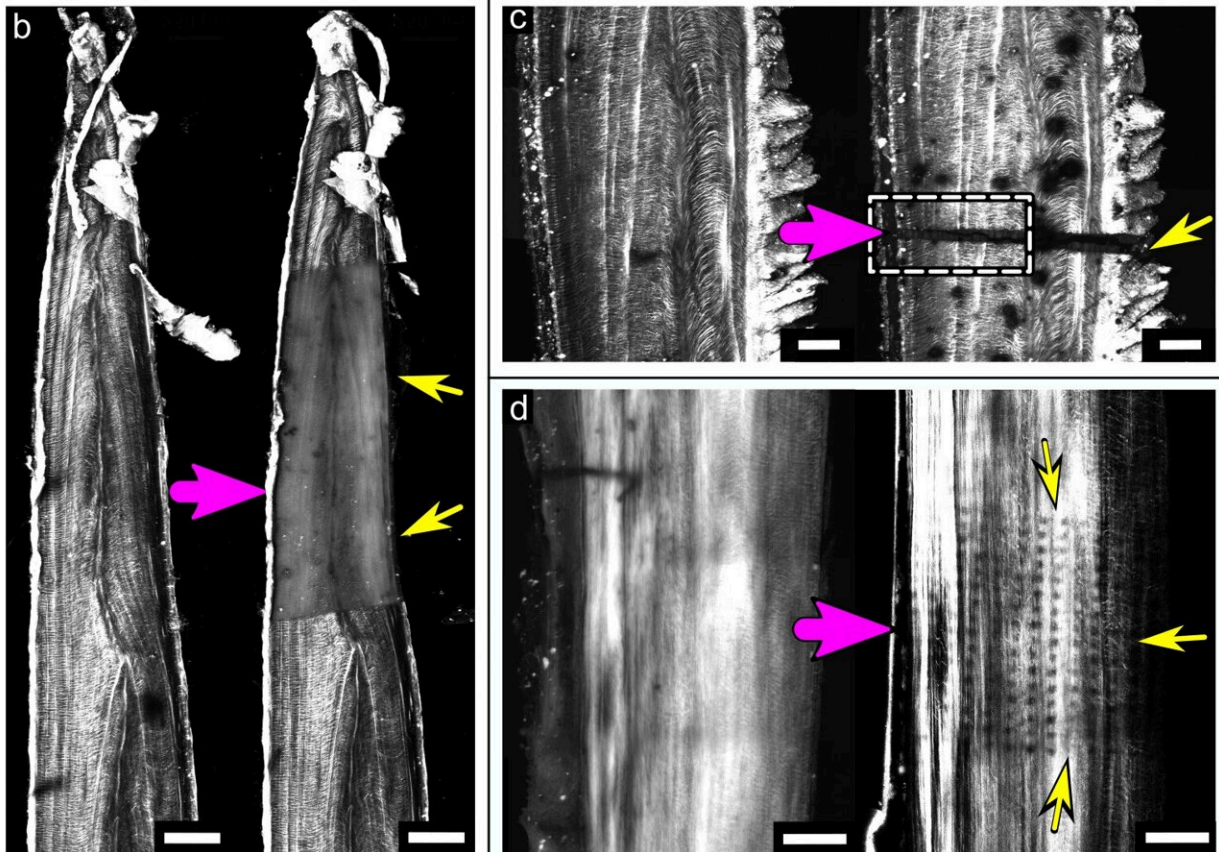


High-energy X-rays leave a trace of destruction in bone collagen

December 22 2022



The images (b) show the collagen distribution in pike bones before (left) and after (right) a μ CT experiment and (c) before (left) and after (right) an X-ray diffraction μ CT experiment at the mySpot beamline, BESSY. Also (d) before (left) and after (right) a 2D mapping XRD mySpot experiment. The damaged areas appear dark marked with yellow arrows. Arrows in pink show the x-rays. Credit: Charité Berlin/HZB

A team of medical researchers at Charité-Universitätsmedizin has analyzed damage by focused high energetic X-rays in bone samples from fish and mammals at BESSY II. With a combination of microscopy techniques, the scientists were able to document the destruction of collagen fibers induced by electrons emitted from the mineral crystals. X-ray methods might impact bone samples when measured for a long time, the researchers conclude.

Their findings are published in the journal *Nature Communications*.

It has long been known that beyond a certain dose, X-rays damage living [tissue](#), so there are clear medical indications for X-rays to keep radiation exposure to a minimum. In basic research on the properties and characteristics of mineralized [tissue samples](#) such as [bone](#), researchers rely on increasingly powerful X-ray sources.

Bones from fish and mammals

"Until now, the motto has actually been: More flux and higher energy is better, because you can achieve greater depth of field and higher resolution with more intense X-rays," says Dr. Paul Zaslansky from Charité-Universitätsmedizin. Zaslansky and his team have now analyzed bone samples from fish and mammals at the MySpot beamline at BESSY II.

BESSY II generates a well-characterized broad range of X-rays, precisely focused in an intermediate energy range, which allows insights into the finest structures and even chemical and physical processes in materials. "Thanks to sensitive detectors and rather mild irradiation conditions in BESSY II as compared with harder X-ray synchrotron sources, we were able to demonstrate on our various bone samples that [collagen fibers](#) become damaged by the irradiation absorption in the mineral nanocrystals," Zaslansky says.

Imaging the protein fibers

"We examined the samples under Second-Harmonic Generation laser-scanning microscopy for the imaging the protein fibers," explains first author Katrein Sauer, who is doing her doctorate in Zaslansky's team. Together with HZB expert Dr. Ivo Zizak, she irradiated bone samples from pike fish, pigs, cattle, and mice with precisely calibrated X-ray light.

The beams left a trail of destruction that is clearly visible in the confocal and electron microscopy images. "The high-energy photons from the X-ray light trigger a cascade of electron excitations. Ionization of calcium and phosphorus in the mineral then damages proteins like collagen in bone," Sauer says. Breakdown of collagen increases with the duration of the irradiation, but also shows up even with short irradiation at high [flux](#).

Minimal doses for research on living materials

"X-ray methods are considered non-destructive in materials research, but at least for research on bone tissues this is not true," says Zaslansky. "We have to be more careful in basic medical research that we don't damage the very structures we actually want to analyze." So, as everywhere in medicine, and even when there are no living tissues and DNA to damage, it comes down to using a minimal dose to get the insights that reflect the material condition without causing damage.

Note: The X-rays produced at BESSY II are about ten thousand times more intense than X-rays used for medical examinations (for X-rays of a broken leg, the German Federal Office for Radiation Protection gives a dose of 0.01 millisievert). X-ray methods are extremely useful for medical examinations.

More information: Katrein Sauer et al, Primary radiation damage in bone evolves via collagen destruction by photoelectrons and secondary emission self-absorption, *Nature Communications* (2022). [DOI: 10.1038/s41467-022-34247-z](https://doi.org/10.1038/s41467-022-34247-z)

Provided by Helmholtz Association of German Research Centres

Citation: High-energy X-rays leave a trace of destruction in bone collagen (2022, December 22) retrieved 30 January 2023 from <https://medicalxpress.com/news/2022-12-high-energy-x-rays-destruction-bone-collagen.html>

This document is subject to copyright. Apart from any fair dealing for the purpose of private study or research, no part may be reproduced without the written permission. The content is provided for information purposes only.