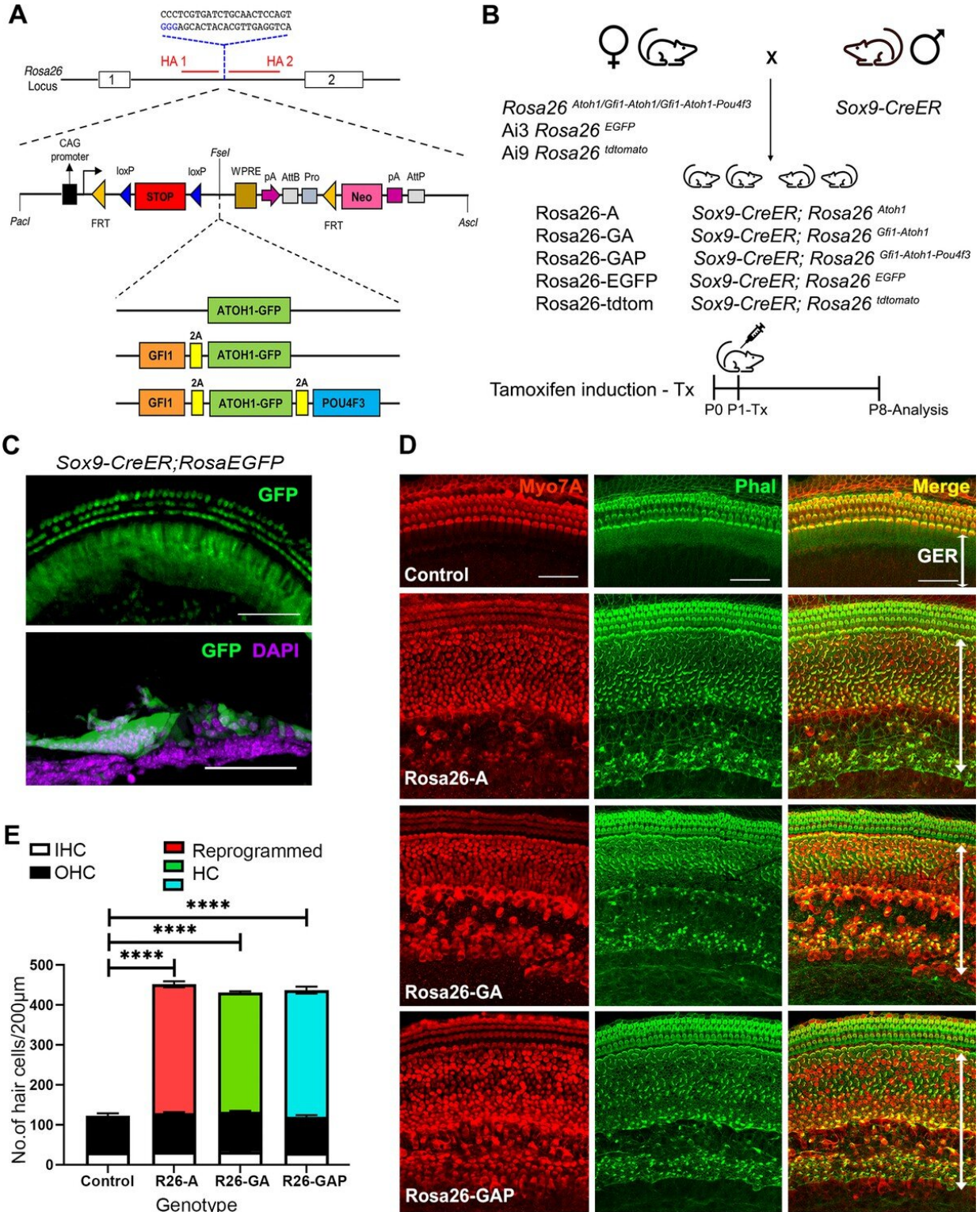


# Research illuminates approaches for long-term hearing loss treatment

December 8 2022

---



Non-sensory cells of the neonatal mouse cochlea can be efficiently reprogrammed to a hair cell fate with combinations of *Atoh1*, *Gfi1* and *Pou4f3*

transcription factors. Credit: *eLife* (2022). DOI: 10.7554/eLife.79712

About 430 million people around the world experience disabling hearing loss. In the United States, approximately 37.5 million adults report some trouble hearing. Hearing loss can happen when any part of the ear or the nerves that carry information on sounds to the brain do not work in the usual way.

For instance, damaged hair [cells](#) in the inner ear can lead to hearing loss. "These cells allow the brain to detect sounds," said Dr. Amrita Iyer, first author of a new paper published in *eLife*. Iyer was a graduate student in the lab of Dr. Andrew Groves, professor and Vivian L. Smith Endowed Chair in Neuroscience and of molecular and human genetics at Baylor College of Medicine, while she was working on this project.

Hair cells are generated during normal development but this ability is progressively lost after birth as mammals mature. "When hair cells are lost in mature animals, the cells cannot be naturally regenerated, which can lead to permanent hearing loss," Iyer explained. "In the current study, we looked closer into the possibility of promoting hair cell regeneration in mature animals using cell reprogramming. Our approach involved the overexpression of various transcription factor combinations."

Transcription factors promote the expression of certain genes and prevent the expression of others. By changing the pattern of gene expression, the researchers hoped to lead cells to a state in which they would regenerate hair cells in mature animals similarly to what happens during development.

"We compared the reprogramming efficiency of the hair cell

transcription factor ATOH1 alone or in combination with two other hair cell transcription factors, GFI1 and POU4F3, in mouse non-sensory cells in the cochlea, the part of the inner ear that supports hearing," Iyer said. "We did this at two timepoints—eight days after birth and 15 days after birth, assessing the extent of hair cell regeneration in mice."

To study the structure of the hair cell bundles generated by reprogramming, Iyer collaborated with Dr. Yeohash Raphael's lab at the University of Michigan to perform scanning [electron microscopy](#) imaging on the cochleae of mice conditionally overexpressing these transcription factors. The images clearly showed that the hair cell bundles were in accordance to what is observed on inner hair cells during development. Further studies showed that these cells also had some characteristics that suggested that they were capable of sensing sound.

"We found that although expressing ATOH1 with hair cell transcription factors GFI1 and POU4F3 can increase the efficiency of hair cell reprogramming in older animals compared to ATOH1 alone or GFI1 plus ATOH1, the hair cells generated by reprogramming at eight days of age—even with three hair cell transcription factors—are significantly less mature than those generated by reprogramming at postnatal day one," Iyer said.

"We suggest that reprogramming with multiple [transcription factors](#) is better able to access the hair cell differentiation gene regulatory network, but that additional interventions may be necessary to produce mature and fully functional [hair cells](#)."

These findings are key to advancing the existing understanding of the mammalian inner ear [hair](#) cell regeneration process. From a therapeutic standpoint, transcription factor-mediated reprogramming and the underlying biology associated with its function may enable fine-tuning of current gene therapy approaches for long-term [hearing loss](#) treatment.

**More information:** Amrita A Iyer et al, Cellular reprogramming with ATOH1, GFI1, and POU4F3 implicate epigenetic changes and cell-cell signaling as obstacles to hair cell regeneration in mature mammals, *eLife* (2022). [DOI: 10.7554/eLife.79712](https://doi.org/10.7554/eLife.79712)

Provided by Baylor College of Medicine

Citation: Research illuminates approaches for long-term hearing loss treatment (2022, December 8) retrieved 15 February 2024 from <https://medicalxpress.com/news/2022-12-illuminates-approaches-long-term-loss-treatment.html>

This document is subject to copyright. Apart from any fair dealing for the purpose of private study or research, no part may be reproduced without the written permission. The content is provided for information purposes only.