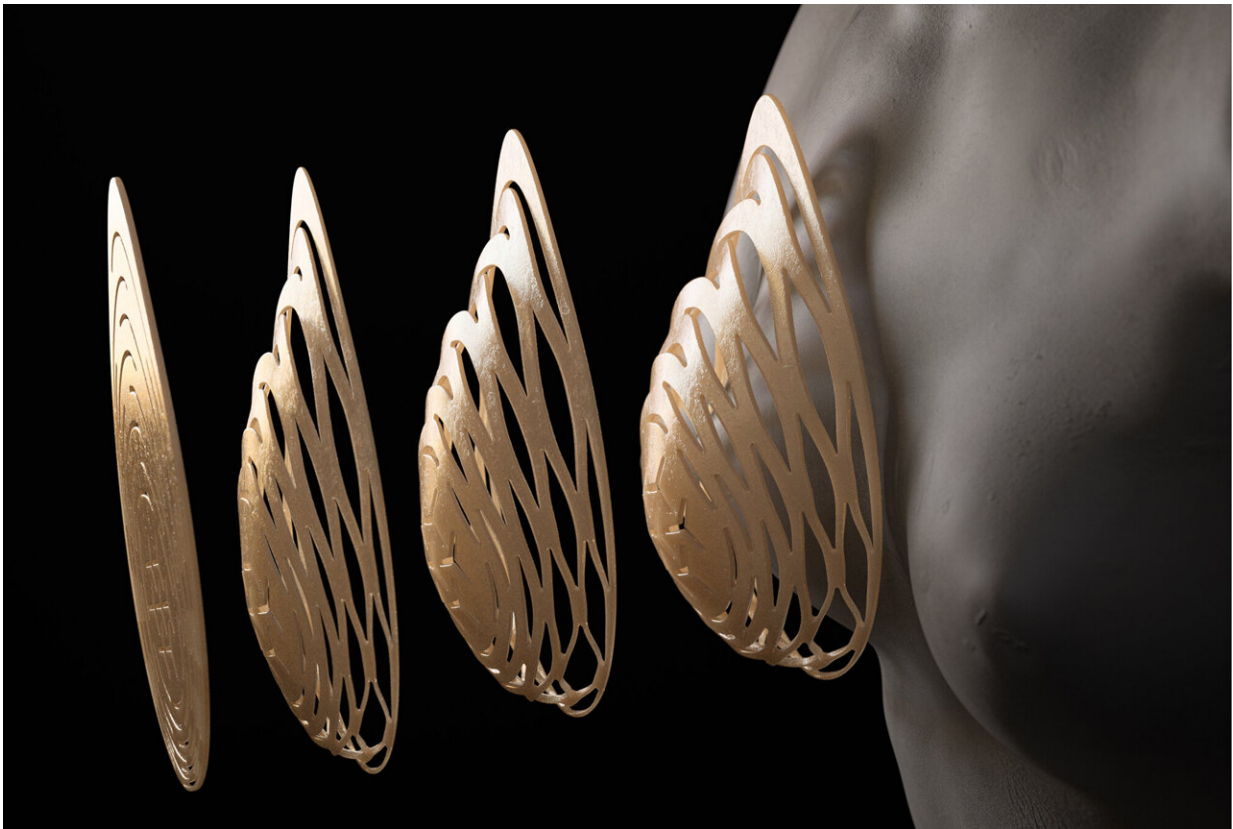


Kirigami technique hints at promising outcomes for breast reconstruction

December 23 2022, by Nathi Magubane



Penn researchers have developed a new technique for aiding in breast reconstruction following a mastectomy, using a kirigami strategy to cut an artificial tissue layer used by surgeons in a way that allows breast implants to take a more natural shape, while using less material. Credit: University of Pennsylvania

For many breast cancer patients, the road to recovery may present hidden complications related to breast reconstruction following a mastectomy.

The insertion of foreign materials such as [silicone breast implants](#) can lead to implant malposition, a condition that affects a significant number of patients even years after surgery.

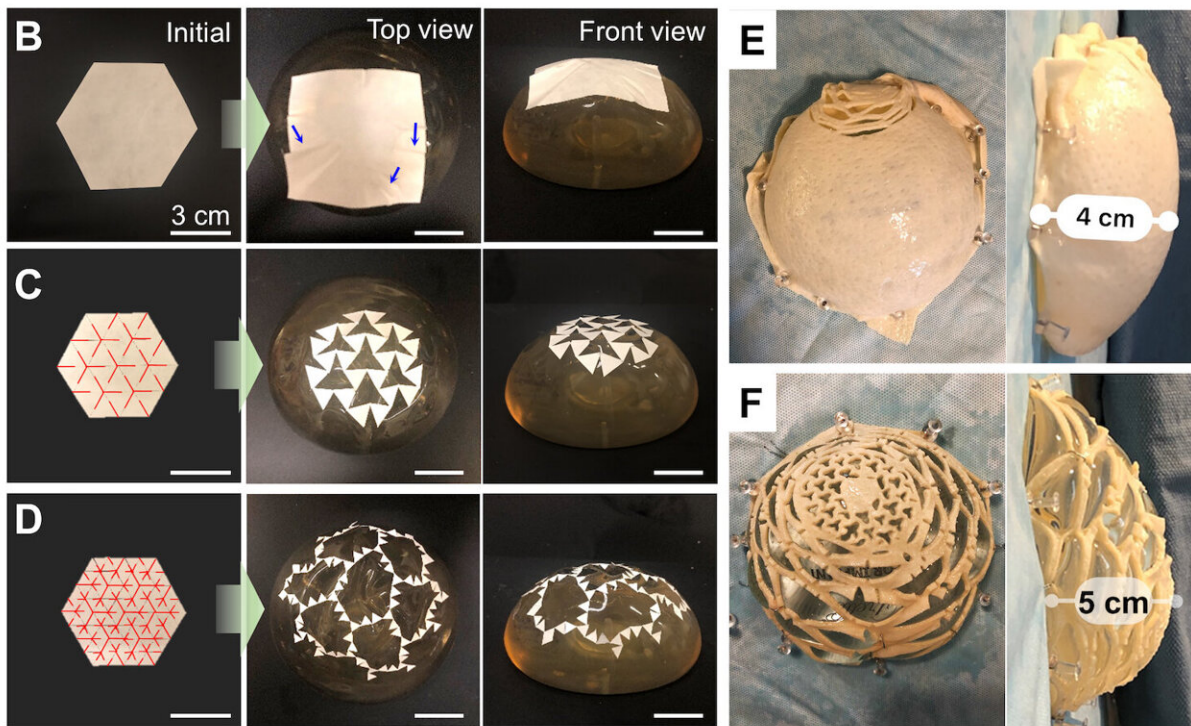
Now, researchers from the University of Pennsylvania have used the principles of a papercutting technique known as kirigami to safely and more securely cover implants while also using less material.

The research, published in *Advanced Materials*, led by Shu Yang in the School of Engineering and Applied Science, describes how leveraging kirigami design practices and computational modeling offers enhanced flexibility and expandability to provide surgeons with an easier-to-use stretchable material that can better wrap around implants, thereby reducing the risk of malpositioning.

"We've taken the materials that currently use in operation rooms for [breast reconstruction](#) and addressed two of its major pitfalls by using kirigami designs," says Yang, senior author of the paper. "Our technique allows the reconstructed breast to more securely take on a more natural shape and can substantially reduce the costs associated with these surgeries."

Following a series of discussions with Suhail Kanchwala, a [plastic surgeon](#) and professor of surgery in the Perelman School of Medicine, the researchers began examining new possibilities for current breast implant wrapping material, called acellular dermal matrices (ADMs). These are a type of surgical mesh that are usually derived from human or [animal skin](#). The cells are removed but the support networks—[structural proteins](#) like collagen, along with other extracellular matrix

components—stay in place to facilitate the recovery of local blood supply and skin cell regeneration. Due to their absence of cells and abundance of scaffolding-like elements, ADMs have gained popularity for their ability to minimize the reaction the [immune system](#) has to foreign objects and offer better support to implants.



Wrapping demonstrations of the silicone gel implant with paper with (B) uncut, (C) level-1, and (B) level-2 fractal cut patterns consisting of triangular rotating sub-units. Cuts are denoted in the red lines and the blue arrows in the uncut paper show the wrinkles generated by curved surface of the implant. (E) Shows a proof-of-concept demonstration of an ADM sheet wrapped around an implant with small line cuts on the upper edge. (F) Shows a proof-of-concept demonstration of an ADM sheet wrapped around an implant with kirigami designs. Credit: University of Pennsylvania

The researchers suspected that ADM sheets could be altered in a unique way to address a concern with contemporary breast implants.

"An issue in breast reconstruction is that the manufactured implants are round, which doesn't effectively mimic the more teardrop-like shape of natural breasts," says Kanchwala. "So, our project wanted to figure out a way to put round implants under the ADM sheets in a way that allows the reconstructed breast to take on a more natural teardrop-like shape."

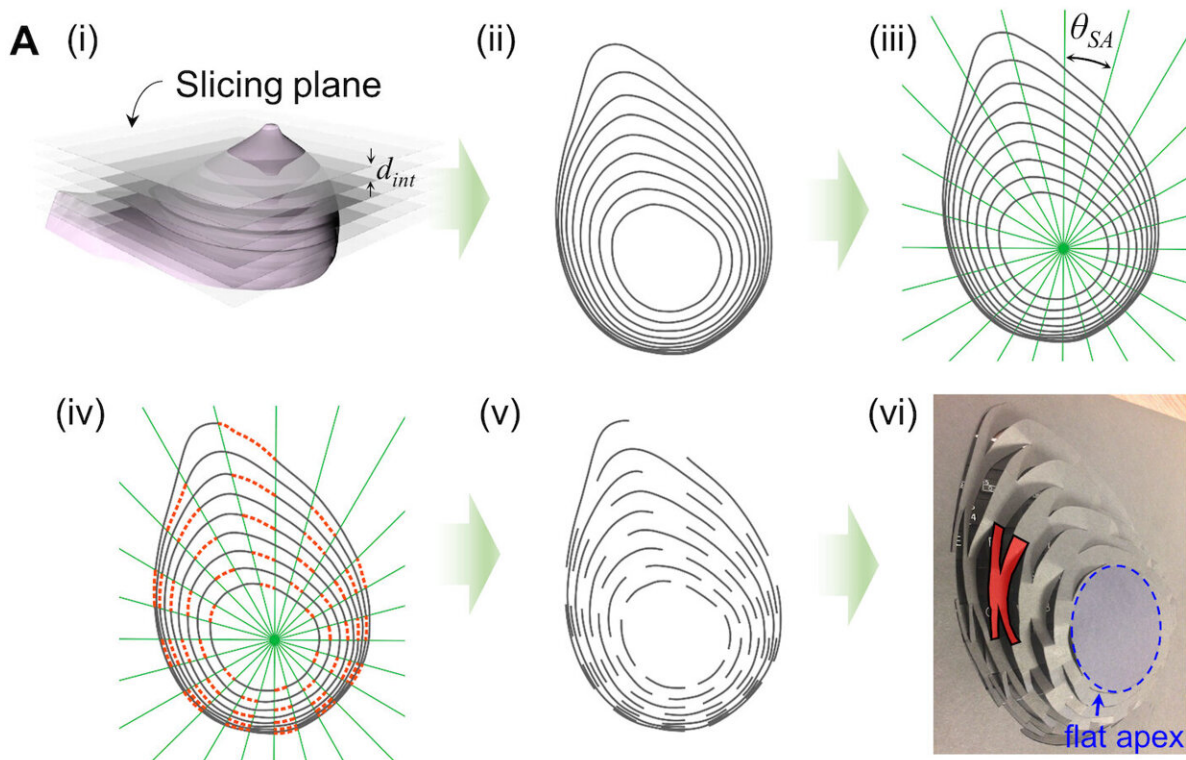
Additionally, ADM sheets in their current configurations cannot conformably wrap around implants, as they do not preserve the curves and angles without forming wrinkles or voids. These can make the implant prone to rotating out of place and lead to mispositioning mishaps. Manufacturers' response to these limitations has included introducing circular hole patterns to the ADM sheets or cutting out certain areas followed by stitching to cover more surface area effectively.

Yang and co-author Randall Kamien, a professor in the Department of Physics and Astronomy in the School of Arts & Sciences, had previously shown that well-placed cuts can transform rigid two-dimensional flat sheets can into highly expandable and malleable three-dimensional geometries that can mimic the contours of complex structures like human faces or mountain ranges.

The core tenet of this kirigami-based strategy is that the introduction of these little cuts divides the material into [high-density](#) rotating units with the freedom to take the form of a multilevel structure. But in this latest work the team needed to create a way to emulate breasts, structures devoid of the form provided by musculature and bone.

"Normally when you do a skin graft, there's a muscle or bone to guide the reformation of the tissue," says Kamien. "So, overcoming this

challenge and finding a new and improved way to recreate tissue from the scaffolding material was particularly exciting."



The algorithmic design process of the contour that provided topographical information of the breast. Credit: University of Pennsylvania

This was done by mapping the topography of the implant, similar to how cartographers chart the peaks and valleys of a mountainous terrain to a two-dimensional page.

The researchers started out with a three-dimensional computer-generated breast model and then laid out equidistant horizontal slices forming vertical layers, or tiers, they used to guide their contour lines. The team then analyzed the contours and generated algorithms to identify the

optimal sites and incision angles for their laser cutter to carve through the ADM sheet. These characteristic cuts are what allow the sheet to expand and stretch securely over an implant.

The team successfully demonstrated this new kirigami-based technique in a mockup operation in which the ADM sheet was sutured to a surgical dummy's chest plate and the silicone implant funneled in between the chest and sheet. They were pleased to confirm that their method uses, on average, 20–40% less material, while also offering a higher degree of customizability in regarding the shape of the reconstructed breast. The researchers believe that, in time, these kirigami-cut ADM sheets have the capacity to become patient specific.

"If the patient has a left-sided breast cancer and a left-sided mastectomy, you could scan the right breast and come up with a kirigami design that would very accurately mimic that patient's natural breast," says Kanchwala "We're not there yet, but the possibilities are exciting."

More information: Young-Joo Lee et al, Natural Shaping of Acellular Dermal Matrices for Implant-Based Breast Reconstruction via Expansile Kirigami, *Advanced Materials* (2022). [DOI: 10.1002/adma.202208088](https://doi.org/10.1002/adma.202208088)

Provided by University of Pennsylvania

Citation: Kirigami technique hints at promising outcomes for breast reconstruction (2022, December 23) retrieved 3 February 2023 from <https://medicalxpress.com/news/2022-12-kirigami-technique-hints-outcomes-breast.html>

This document is subject to copyright. Apart from any fair dealing for the purpose of private study or research, no part may be reproduced without the written permission. The content is provided for information purposes only.