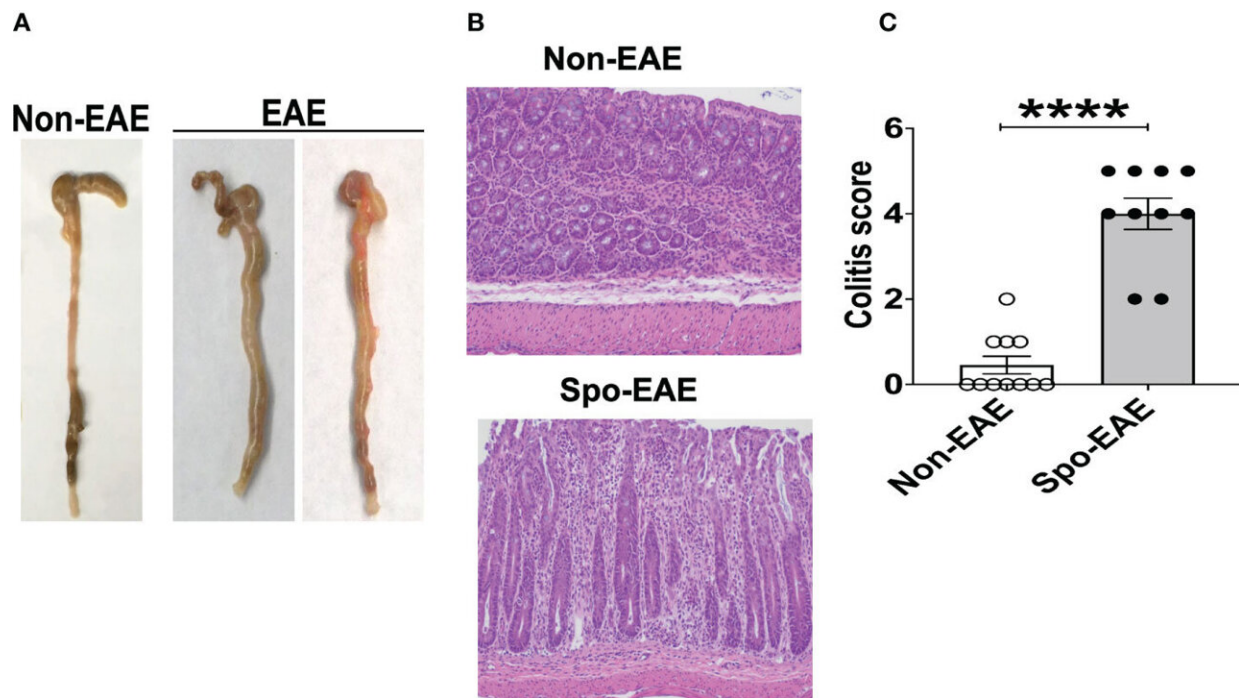


# Poor gut health may drive multiple sclerosis—better diet may ease it

December 15 2022



Development of colitis in spontaneous EAE mice. (A) Swollen colon in spontaneous EAE mice. (B) H&E histopathology of swollen colon isolated from spontaneous EAE and non-EAE mice. (C) Colitis score was evaluated by immunopathological analysis in non-EAE (n = 11) and EAE mice (n= 10) as described in materials and methods. Mean ± SEM. \*\*\*\*P

Citation: Poor gut health may drive multiple sclerosis—better diet may ease it (2022, December 15) retrieved 8 July 2023 from <https://medicalxpress.com/news/2022-12-poor-gut-health-multiple-sclerosisbetter.html>

This document is subject to copyright. Apart from any fair dealing for the purpose of private study or research, no part may be reproduced without the written permission. The content is provided for information purposes only.