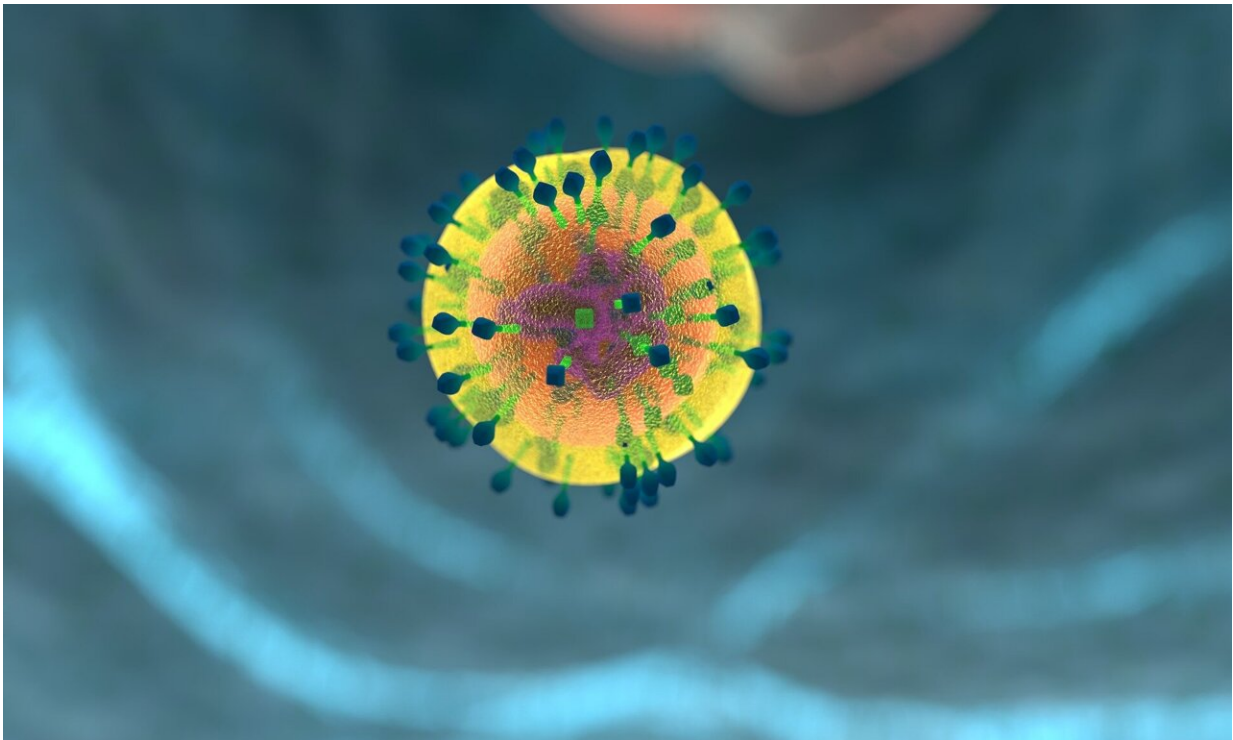


# To rev-up CAR T-cell therapy, inhibit the SUSD2 membrane protein, study suggests

January 24 2023

---



Credit: Pixabay/CC0 Public Domain

Inhibiting a particular protein in cancer-killing immune cells might improve the long-term effectiveness of CAR T-cell and other immune checkpoint therapies, according to a new study by researchers at The Ohio State University Comprehensive Cancer Center—Arthur G. James Cancer Hospital and Richard J. Solove Research Institute

(OSUCCC—James).

Published in the journal *Nature Immunology*, the [animal study](#) examined the function of a membrane protein called SUSD2. The molecule is expressed by cancer-killing [immune cells](#) called CD8 T cells, but its role in antitumor immunity remains unknown. It is also expressed in a variety of human cancers, including breast, ovarian, non-small cell lung, gastric and [colorectal cancer](#).

The new study had three major findings. First, the presence of SUSD2 molecules in CD8 T cells inhibited the ability of CD8 T cells to attack [cancer cells](#). Second, CD8 T cells that lacked SUSD2 more effectively slowed [tumor growth](#) in several tumor models.

Last, the researchers showed that SUSD2 inhibited antitumor activity by suppressing the binding of CD8 T cells with interleukin (IL)-2, a growth factor that drives the expansion of activated CD8 T cells.

"We showed that SUSD2 inhibits IL-2 signaling, which then dulled the antitumor function of CD8 T cells," said principal investigator Dr. Haitao Wen, an associate professor in The Ohio State University Department of Microbial Infection and Immunity.

"Our study also showed that when CAR T cells are engineered to lack the gene for the SUSD2 protein, they are more effective in fighting cancer," said Wen, who is also a member of the Molecular Carcinogenesis and Chemoprevention Research Program. "We believe this represents a promising strategy to improve the efficacy of CAR T-cell therapy."

CAR T-cell therapy is a growing and important form of cancer immune therapy. The therapy involves isolating cancer-killing T cells from a patient and genetically modifying them so that they target the patient's

specific tumor. The modified T cells, called [chimeric antigen receptor \(CAR\) T cells](#), are infused back into the patient's tumor, where they attack and, ideally, destroy it.

CAR T-cell and other immune therapies are revolutionizing treatments for lung and other cancers, but in many cases a patient's tumor becomes resistant to the therapy. The problem is that body cells normally express "checkpoint molecules," which prevent immune cells from attacking normal, healthy body cells.

Cancer cells also often display immune checkpoint molecules. When CD8 T cells encounter checkpoint molecules in tumor cells, they shut down the attacking T cells, enabling the tumor to survive and grow. SUSD2 is a type of checkpoint molecule.

"Overall, our study provides genetic and biochemical evidence that SUSD2 inhibits antitumor CD8 T cell function," Wen said.

"Furthermore, CAR T cells that lack SUSD2 showed a stronger antitumor response compared with CAR T cells that have SUSD2. This suggests that this molecule has therapeutic potential, and we are currently developing an antibody against SUSD2 as a novel immunotherapeutic approach."

**More information:** Bao Zhao et al, SUSD2 suppresses CD8+ T cell antitumor immunity by targeting IL-2 receptor signaling, *Nature Immunology* (2022). [DOI: 10.1038/s41590-022-01326-8](https://doi.org/10.1038/s41590-022-01326-8)

Provided by Ohio State University Medical Center

Citation: To rev-up CAR T-cell therapy, inhibit the SUSD2 membrane protein, study suggests (2023, January 24) retrieved 20 February 2023 from

<https://medicalxpress.com/news/2023-01-rev-up-car-t-cell-therapy-inhibit.html>

This document is subject to copyright. Apart from any fair dealing for the purpose of private study or research, no part may be reproduced without the written permission. The content is provided for information purposes only.