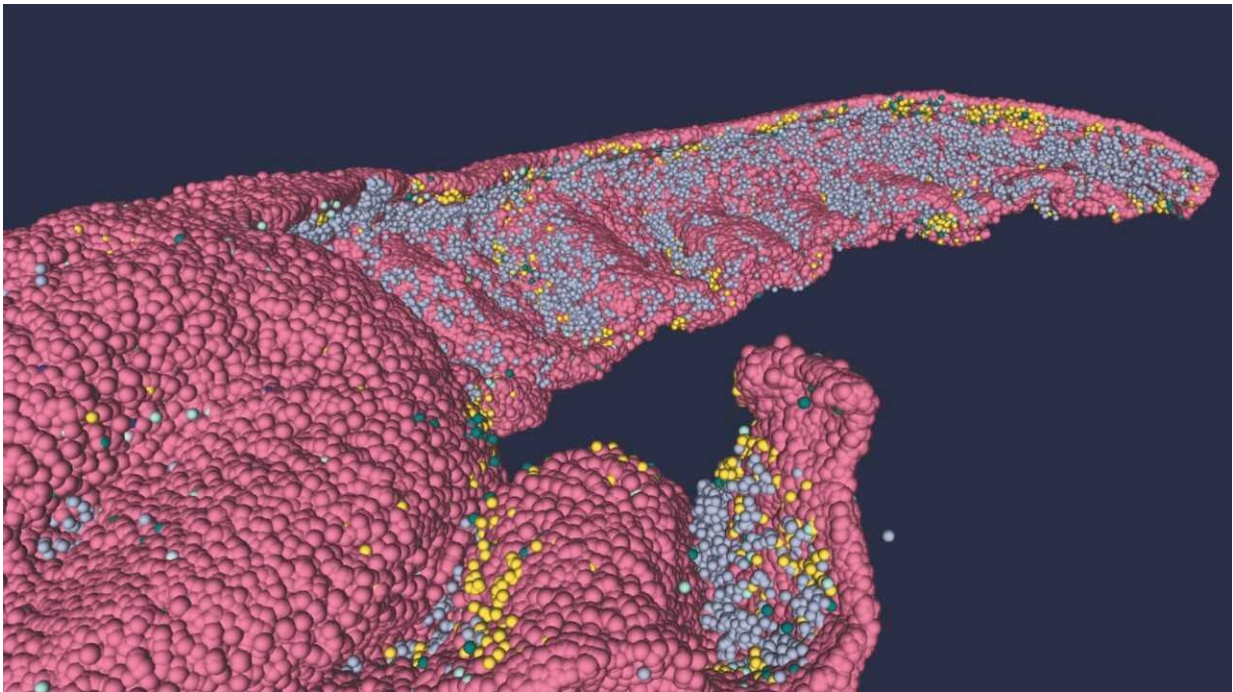


Researchers develop new full-scale 3D structural model of the human hippocampus

March 24 2023, by Roberto Inchingolo



Researchers of the Human Brain Project have developed a full-scale 3D structural model of the human hippocampus. Credit: Michele Migliore

A new high resolution model of the CA1 region of the human hippocampus has been developed by the Institute of Biophysics of the Italian National Research Council (CNR-IBF) and University of Modena e Reggio Emilia (UNIMORE), part of the Human Brain Project. The single-cell resolution model, which replicates the structure and

architecture of the area, along with the position and relative connectivity of the neurons, was developed from a full-scale dataset of high resolution images.

The dataset is available in the BigBrain Atlas and it will be soon available on EBRAINS. According to the study, published in the journal *Nature Computational Science*, the same methodology could be applied to generate full-scale models of other human brain areas and also to be integrated in a co-simulation environment such as the The Virtual Brain.

"The amount of data on individual neurons of the human [brain](#) is very limited, both in terms of relative 3D coordinates and in terms of connectivity among neurons," explains Michele Migliore from CNR-IBF, Palermo. "We have performed a data mining operation on high [resolution](#) images of the human hippocampus, obtained from the BigBrain database. The position of individual neurons has been derived from a detailed analysis of these images."

The researchers have developed a customized image processing algorithm in order to obtain a realistic distribution of neuronal positioning, and an algorithm to generate neuronal connectivity by approximating dendritic and axonal shapes.

"Dendrites and axons can be classified into categories depending on the general shape of their extensions: for example, some fit into narrow cones, others have a broad complex extension that can be approximated by dedicated geometrical volumes, and the connectivity to nearby neurons changes accordingly," explains Daniela Gandolfi from UNIMORE, lead author of the study.

"Our [algorithm](#) analyzes high resolution images and, after the creation of specific geometrical shapes to be associated with morphological properties, allows us to calculate the probability that two neurons are

connected. The method provides not only the 3D positioning of neurons, but also their connectivity."

"We compared the density of neurons in our 3D model with existing literature on the hippocampus, and found that it matches experimental observations, validating our model," concludes Gandolfi. The researchers are sharing both the dataset and the extraction methodology on the EBRAINS platform. "Our main goal with this study was to make the data readily available with HBP and the broader neuroscience community. We are now using the same approach to model other [brain regions](#)."

More information: Daniela Gandolfi et al, Full-scale scaffold model of the human hippocampus CA1 area, *Nature Computational Science* (2023). [DOI: 10.1038/s43588-023-00417-2](https://doi.org/10.1038/s43588-023-00417-2)

A single-cell-resolution mathematical model of the CA1 human hippocampus, *Nature Computational Science* (2023). [DOI: 10.1038/s43588-023-00421-6](https://doi.org/10.1038/s43588-023-00421-6)

Provided by Human Brain Project

Citation: Researchers develop new full-scale 3D structural model of the human hippocampus (2023, March 24) retrieved 25 March 2023 from <https://medicalxpress.com/news/2023-03-full-scale-3d-human-hippocampus.html>

This document is subject to copyright. Apart from any fair dealing for the purpose of private study or research, no part may be reproduced without the written permission. The content is provided for information purposes only.