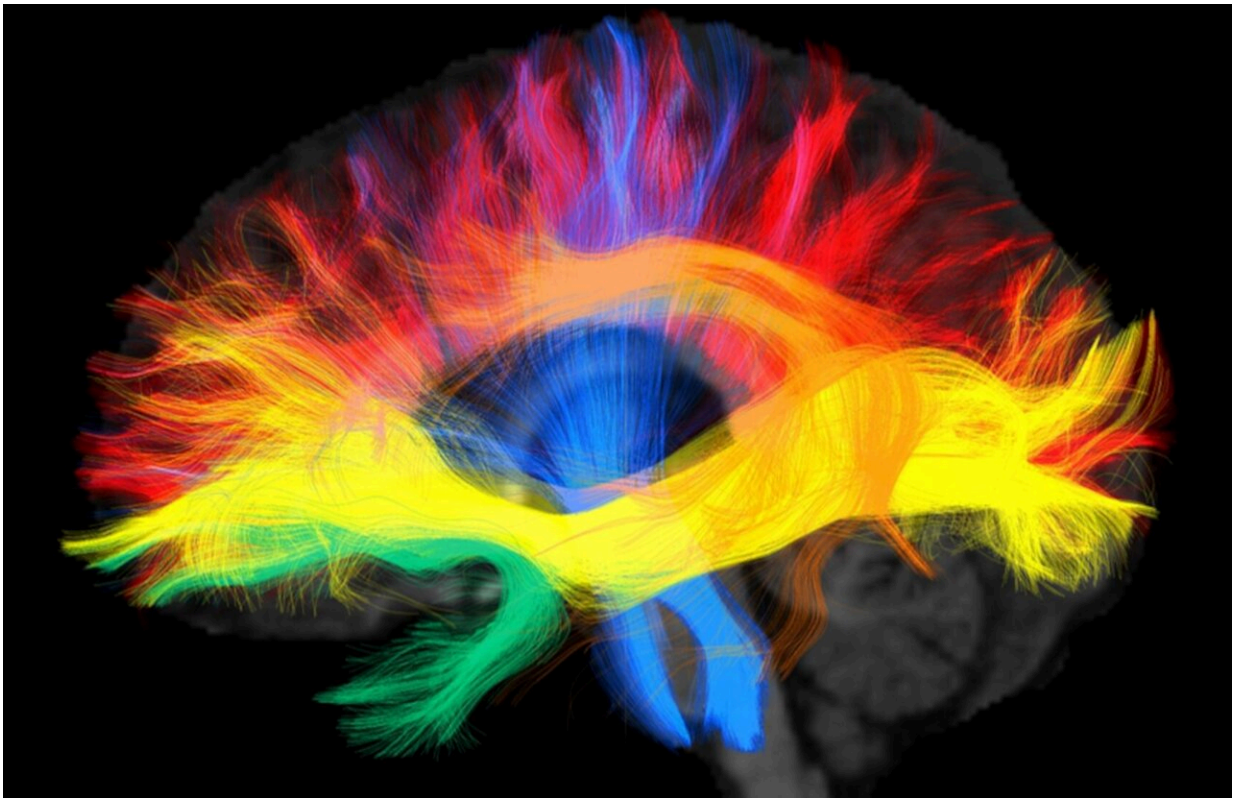


Study examines how our native language shapes our brain wiring

March 17 2023



The scientists analyzed the structural language connectome of native German and Arabic speakers. Credit: MPI CBS

Scientists at the Max Planck Institute for Human Cognitive and Brain Sciences in Leipzig have found evidence that the language we speak shapes the connectivity in our brains that may underlie the way we think.

With the help of magnetic resonance tomography, they looked deep into the brains of native German and Arabic speakers and discovered differences in the wiring of the language regions in the brain.

Xuehu Wei, who is a doctoral student in the research team around Alfred Anwander and Angela Friederici, compared the [brain scans](#) of 94 [native speakers](#) of two very [different languages](#) and showed that the language we grow up with modulates the wiring in the brain. Two groups of native speakers of German and Arabic respectively were scanned in a [magnetic resonance](#) imaging (MRI) machine.

The high-resolution images not only show the anatomy of the brain, but also allow to derive the connectivity between the [brain areas](#) using a technique called diffusion-weighted imaging. The data showed that the axonal white matter connections of the language network adapt to the processing demands and difficulties of the mother tongue.

"Arabic native speakers showed a stronger connectivity between the left and right hemispheres than German native speakers," explained Alfred Anwander, last author of the study that was recently published in the journal *NeuroImage*. "This strengthening was also found between semantic language regions and may be related to the relatively complex semantic and phonological processing in Arabic."

As the researchers discovered, native German speakers showed stronger connectivity in the left hemisphere language network. They argue that their findings may be related to the complex syntactic processing of German, which is due to the free word order and greater dependency distance of sentence elements.

"Brain connectivity is modulated by learning and the environment during childhood, which influences processing and cognitive reasoning in the adult brain. Our study provides new insights how the brain adapts to

cognitive demands, that is, the structural [language](#) connectome is shaped by the mother tongue," said Anwander.

This is one of the first studies to document differences between the brains of people who grew up with different native languages and could give researchers a way to understand cross-cultural processing differences in the brain. In a next study, the research team will analyze longitudinal structural changes in the brains of Arabic-speaking adults as they learn German over six months.

More information: Xuehu Wei et al, Native language differences in the structural connectome of the human brain, *NeuroImage* (2023). [DOI: 10.1016/j.neuroimage.2023.119955](#)

Provided by Max Planck Society

Citation: Study examines how our native language shapes our brain wiring (2023, March 17) retrieved 2 May 2023 from <https://medicalxpress.com/news/2023-03-native-language-brain-wiring.html>

| |
|--|
| <p>This document is subject to copyright. Apart from any fair dealing for the purpose of private study or research, no part may be reproduced without the written permission. The content is provided for information purposes only.</p> |
|--|