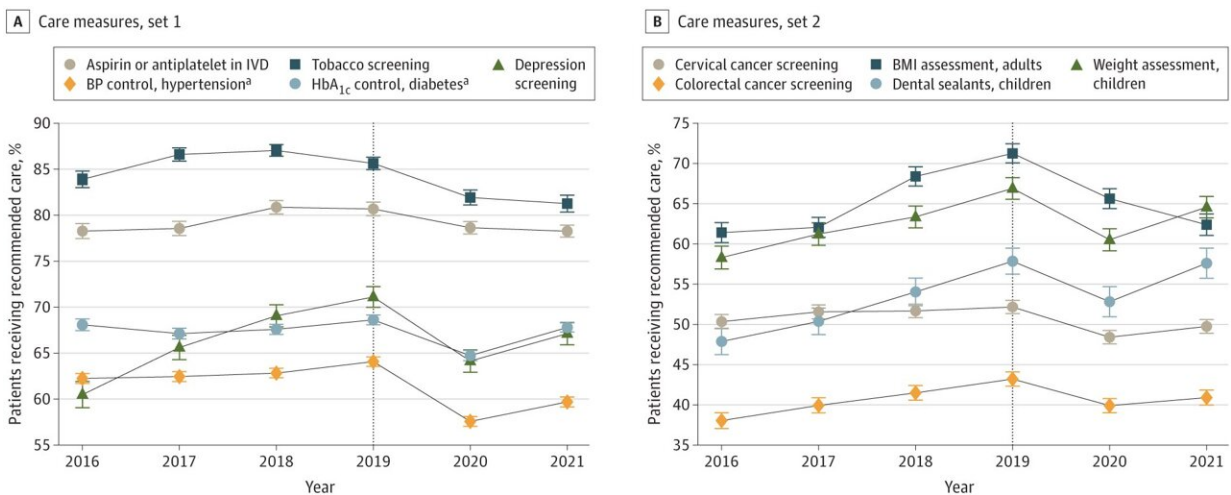


Nearly all quality care measures, visits decreased substantially at federally qualified health centers during COVID

April 13 2023



Trends in Quality-of-Care Measures at US Federally Qualified Health Centers, 2016-2021. BMI indicates body mass index; HbA_{1c}, hemoglobin A_{1c}; IVD, ischemic vascular disease.^aBlood pressure (BP) and HbA_{1c} control measures require (1) clinical control (ie, most recent BP

Citation: Nearly all quality care measures, visits decreased substantially at federally qualified health centers during COVID (2023, April 13) retrieved 29 April 2023 from <https://medicalxpress.com/news/2023-04-quality-decreased-substantially-federally-health.html>

This document is subject to copyright. Apart from any fair dealing for the purpose of private study or research, no part may be reproduced without the written permission. The content is provided for information purposes only.