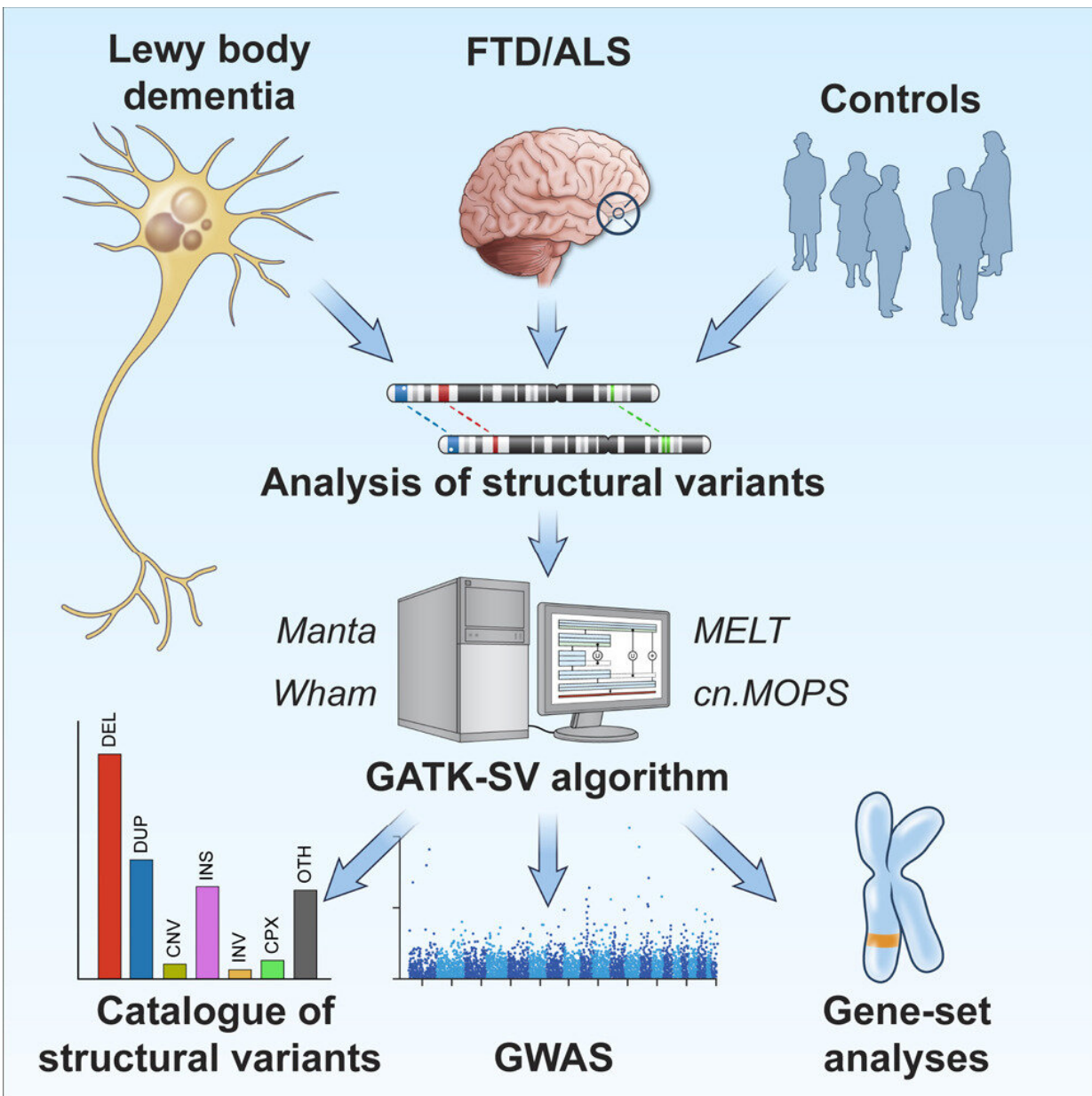


# Researchers identify large genetic changes that contribute to dementia risk

May 8 2023



Graphical abstract. Credit: *Cell Genomics* (2023). DOI: 10.1016/j.xgen.2023.100316

Scientists at the National Institutes of Health have identified new genetic risk factors for two types of non-Alzheimer's dementia. These findings were published in *Cell Genomics* and detail how researchers identified large-scale DNA changes, known as structural variants, by analyzing thousands of DNA samples.

The team discovered several structural variants that could be risk factors for Lewy body dementia (LBD) and frontotemporal dementia (FTD). The project was a collaborative effort between scientists at the National Institute of Neurological Disorders and Stroke (NINDS) and the National Institute on Aging (NIA) at NIH.

Structural variants have been implicated in a variety of neurological disorders. Unlike more commonly studied mutations, which often affect one or a few DNA building blocks called nucleotides, structural variants represent at least 50 but often hundreds, or even thousands, of nucleotides at once, making them more challenging to study.

"If you imagine that our entire genetic code is a book, a structural variant would be a paragraph, page, or even an entire chapter that has been removed, duplicated, or inserted in the wrong place," said Sonja W. Scholz, M.D., Ph.D., investigator in the neurogenetics branch of NINDS and senior author of this study.

By combining cutting-edge computer algorithms capable of mapping structural variations across the whole genome with [machine learning](#), the research team analyzed [whole-genome](#) data from thousands of patient samples and several thousand unaffected controls.

A previously unknown variant in the gene TCPN1 was found in samples from patients with LBD, a disease, that like Parkinson's disease, is associated with abnormal deposits of the protein alpha-synuclein in the brain. This variant, in which more than 300 nucleotides are deleted from the gene, is associated with a higher risk for developing LBD. While this finding is new for LBD, TCPN1 is a known risk factor for Alzheimer's disease, which could mean that this structural variant plays a role in the broader dementia population.

"From a genetics standpoint, this is a very exciting finding," said Dr. Scholz. "It provides a point of reference for [cell biology](#) and animal model studies and possibly down the road, a target for intervention."

By looking at a group of 50 genes implicated in inherited [neurodegenerative diseases](#), the investigators were able to identify additional rare structural variants, including several that are known to cause disease. The analyses also identified two well-established risk factors for FTD changes in the C9orf72 and MAPT genes. These proof-of-concept findings bolstered the strength of the study's new findings by demonstrating that the algorithms were properly working.

Because reference maps for currently-available [structural variants](#) are limited, the researchers generated a catalog based on the data obtained in these analyses. The analysis code and all the raw data are now available to the scientific community for use in their studies.

An interactive app also allows investigators to study their genes of interest and ask which variants are present in controls vs. LBD or FTD cases. The authors assert these resources may make complex [genetic data](#) more accessible to non-bioinformatics experts, which will accelerate the pace of discovery.

"Research to unravel the intricate genetic architecture of

neurodegenerative diseases is resulting in significant advances in scientific understanding," said Bryan J. Traynor, M.D., Ph.D., senior investigator at NIA. "With each discovery, we shed light on the mechanisms behind neuronal cell death or dysfunction, paving the way for precision medicine to combat these debilitating and fatal disorders."

Researchers expect that the dataset will continue to grow as additional data are analyzed.

**More information:** Karri Kaivola et al, Genome-wide structural variant analysis identifies risk loci for non-Alzheimer's dementias, *Cell Genomics* (2023). [DOI: 10.1016/j.xgen.2023.100316](https://doi.org/10.1016/j.xgen.2023.100316)

Provided by National Institutes of Health

Citation: Researchers identify large genetic changes that contribute to dementia risk (2023, May 8) retrieved 1 February 2024 from <https://medicalxpress.com/news/2023-05-large-genetic-contribute-dementia.html>

<p>This document is subject to copyright. Apart from any fair dealing for the purpose of private study or research, no part may be reproduced without the written permission. The content is provided for information purposes only.</p>
--