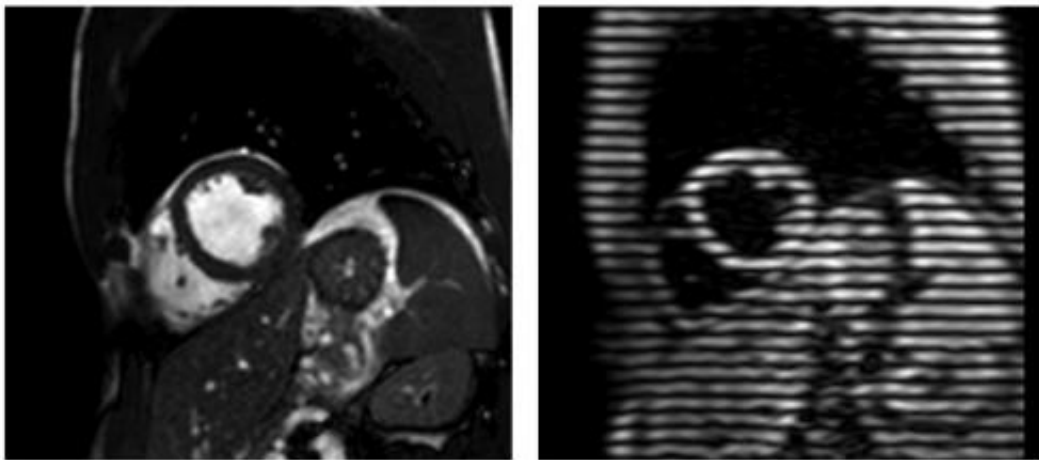


Cardiac MRI reveals energy drinks alter heart function

December 2 2013



To visualize cardiac magnetic resonance tagging, a cross-section of the heart in common imaging technique is seen on the left and tagged myocardium using CSPAMM on the right. Credit: Radiological Society of North America

Healthy adults who consumed energy drinks high in caffeine and taurine had significantly increased heart contraction rates one hour later, according to a study presented today at the annual meeting of the Radiological Society of North America (RSNA).

"Until now, we haven't known exactly what effect these energy drinks have on the function of the heart," said radiology resident Jonas Dörner, M.D., of the cardiovascular imaging section at the University of Bonn, Germany, which is led by the study's principal investigator, Daniel K.

Thomas, M.D. "There are concerns about the products' potential adverse side effects on [heart function](#), especially in adolescents and [young adults](#), but there is little or no regulation of energy drink sales."

Energy drinks represent a multibillion dollar industry that is growing every day. While teenagers and young adults have traditionally been the largest consumers, in recent years more people of all demographics have begun consuming energy drinks.

A 2013 report from the Substance Abuse and Mental Health Services Administration stated that in the U.S. from 2007 to 2011, the number of emergency department visits related to energy drink consumption nearly doubled, increasing from 10,068 to 20,783. Most of the cases were identified among patients aged 18 to 25, followed by those aged 26 to 39.

"Usually energy drinks contain taurine and caffeine as their main pharmacological ingredients," Dr. Dörner said. "The amount of caffeine is up to three times higher than in other caffeinated beverages like coffee or cola. There are many side effects known to be associated with a high intake of caffeine, including rapid heart rate, palpitations, rise in blood pressure and, in the most severe cases, seizures or sudden death."

For the study, which is ongoing, Dr. Dörner and colleagues used cardiac magnetic resonance imaging (MRI) to measure the effect of energy drink consumption on heart function in 18 healthy volunteers, including 15 men and three women with a mean age of 27.5 years. Each of the volunteers underwent cardiac MRI before and one hour after consuming an energy drink containing taurine (400 mg/100 ml) and caffeine (32 mg/100 ml).

Compared to the baseline images, results of cardiac MRI performed one hour after the study participants consumed the energy drink revealed

significantly increased peak strain and peak systolic strain rates (measurements for contractility) in the [left ventricle](#) of the heart. The heart's left ventricle receives oxygenated blood from the lungs and pumps it to the aorta, which distributes it throughout the rest of the body.

"We don't know exactly how or if this greater contractility of the heart impacts daily activities or athletic performance," Dr. Dörner said. "We need additional studies to understand this mechanism and to determine how long the effect of the energy drink lasts."

The researchers found no significant differences in heart rate, blood pressure or the amount of blood ejected from the left ventricle of the heart between the volunteers' baseline and second MRI exams.

"We've shown that energy drink consumption has a short-term impact on cardiac contractility," Dr. Dörner said. "Further studies are needed to evaluate the impact of long-term energy drink consumption and the effect of such drinks on individuals with heart disease."

Dr. Dörner said that while long-term risks to the [heart](#) from drinking energy drinks remain unknown, he advises that children, as well as people with known cardiac arrhythmias, should avoid energy drinks, because changes in contractility could trigger arrhythmias. He also cautions that additional study is needed to address risks posed by the consumption of [energy drinks](#) in combination with alcohol.

Provided by Radiological Society of North America

Citation: Cardiac MRI reveals energy drinks alter heart function (2013, December 2) retrieved 28 March 2023 from

<https://medicalxpress.com/news/2013-12-cardiac-mri-reveals-energy-heart.html>

This document is subject to copyright. Apart from any fair dealing for the purpose of private study or research, no part may be reproduced without the written permission. The content is provided for information purposes only.