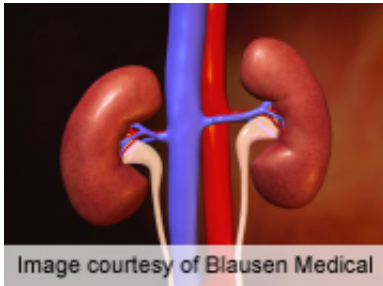


# CKD, glomerulonephritis risk higher for those with psoriasis

22 December 2014



"Psoriasis was associated with a higher risk of developing CKD and GN," the authors write. "High severity, psoriatic arthritis involvement, and concomitant NSAID use further increased the risk of CKD in [patients](#) with [psoriasis](#)."

One author disclosed financial ties to the pharmaceutical industry.

**More information:** [Abstract](#)  
[Full Text \(subscription or payment may be required\)](#)

Copyright © 2014 [HealthDay](#). All rights reserved.

(HealthDay)—Psoriasis is associated with a higher risk of developing chronic kidney disease (CKD) and glomerulonephritis (GN), according to a study published online Dec. 15 in the *British Journal of Dermatology*.

H.-Y. Chiu, from the National Taiwan University in Taipei, and colleagues identified 4,344 patients with psoriasis for the study cohort and randomly selected 13,032 subjects to serve as controls. Each subject was followed for a five-year period to identify subsequent development of GN and CKD.

The researchers found that psoriasis was independently associated with an increased risk of CKD during the follow-up period (hazard ratio [HR], 1.28), after adjusting for traditional CKD risk factors. This association may be partly explained by the increased incidence of GN in psoriasis patients (HR, 1.50). The increased risk of CKD and GN was seen in patients with both mild and severe psoriasis, compared with the control cohort. The risk increased with severity. Psoriasis patients with arthritis had a higher risk of CKD compared to patients without arthritis (HR, 1.62 and 1.26, respectively). Nonsteroidal anti-inflammatory drugs (NSAIDs) had the strongest association of any medications with CKD in patients with psoriasis (adjusted odds ratio, 1.69).

APA citation: CKD, glomerulonephritis risk higher for those with psoriasis (2014, December 22) retrieved 15 September 2022 from <https://medicalxpress.com/news/2014-12-ckd-glomerulonephritis-higher-psoriasis.html>

*This document is subject to copyright. Apart from any fair dealing for the purpose of private study or research, no part may be reproduced without the written permission. The content is provided for information purposes only.*