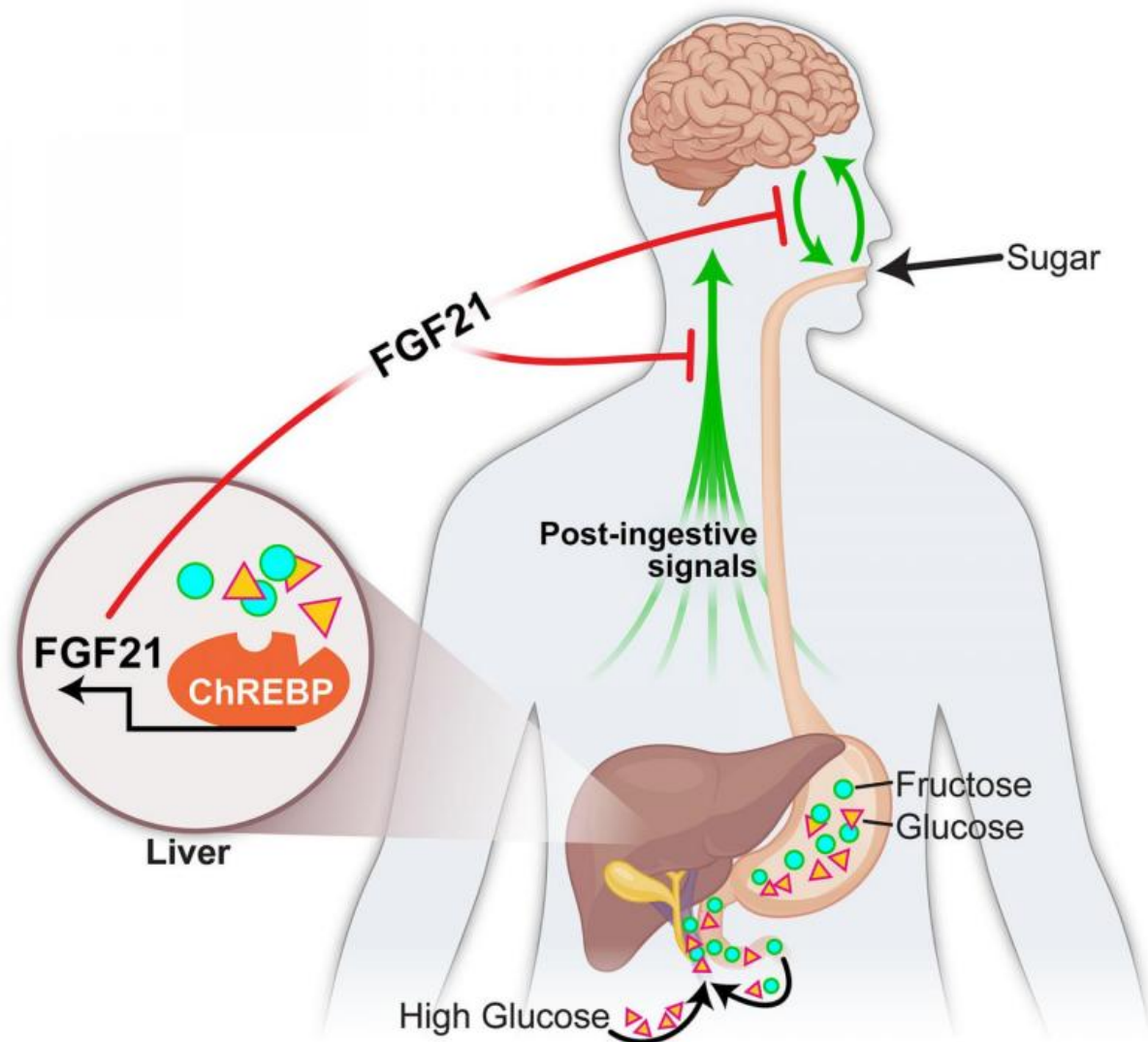


Study identifies liver-generated hormone that regulates 'sweet tooth'

December 24 2015



A University of Iowa-led study has identified a hormone that appears to be involved in sugar cravings and consumption. The research could improve diet and help patients who are diabetic or obese. Credit: University of Iowa

We all love our sugar, especially during the holidays. Cookies, cake, and candy are simply irresistible.

While [sugar](#) cravings are common, the physiological mechanisms that trigger our "sweet tooth" are not well defined.

A University of Iowa-led study in [mice](#) shows that a hormone produced by the liver, fibroblast growth factor 21 (FGF21), suppresses the consumption of simple sugars. The researchers report that FGF21 is produced in the liver in response to high carbohydrate levels. FGF21 then enters the bloodstream, where it sends a signal to the brain to suppress the preference for sweets.

"This is the first liver-derived hormone we know that regulates [sugar intake](#) specifically," says Matthew Potthoff, assistant professor of pharmacology in the UI Carver College of Medicine. Potthoff is co-senior author on the paper, published online in the journal *Cell Metabolism*, with Matthew Gillum, professor at the University of Copenhagen (Denmark).

Previous research explains how certain hormones affect appetite; however, these hormones do not regulate any specific macronutrient (carbohydrate, protein, fat) and are produced by organs other than the liver.

The research could improve diet and help patients who are diabetic or obese.

"We've known for a while that FGF21 can enhance insulin sensitivity," says Lucas BonDurant, a doctoral student in the Interdisciplinary Graduate Program in Molecular and Cellular Biology and co-first author in the study. "Now, there's this dimension where FGF21 can help people who might not be able to sense when they've had enough sugar, which may contribute to diabetes."

This work is based on human genome-wide studies where researchers found associations between certain DNA mutations and people's intake of specific macronutrients. Two of these mutations were located near the FGF21 gene, prompting the UI-led team to identify the role of this hormone in regulating macronutrient preference.

BonDurant and colleagues used genetically-engineered mouse models and pharmacological approaches to examine the role of FGF21 in regulating sugar cravings. In normal mice, BonDurant injected FGF21 and gave the mice a choice between a normal diet and a sugar-enriched diet. Researchers observed that the mice didn't completely stop eating sugar, but they ate seven times less than normal.

The research team also studied genetically-modified mice that either didn't produce FGF21 at all or produced a lot of FGF21 (over 500 times more than normal mice). The [genetically-modified mice](#) had a choice between the same two diets as the normal mice. Researchers observed that the mice that didn't produce FGF21 at all ate more sugar, whereas the mice that produced a lot of FGF21 ate less sugar.

Based on these results, the team concluded that FGF21 decreases appetite and intake of sugar. However, FGF21 does not reduce intake of all sugars (sucrose, fructose, and glucose) equally. FGF21 also doesn't impact the intake of complex carbohydrates.

While BonDurant, a Dean's Graduate Research Fellow and a UI Sloan

Scholar, found that FGF21 sends signals to the brain, additional work is necessary to identify the precise neural pathways that regulate FGF21's ability to manage macronutrient preference. UI researchers are focused on the hypothalamus—a section of the brain responsible for regulating feeding behavior and energy homeostasis. Good graf

"In addition to identifying these neural pathways, we would like to see if additional hormones exist to regulate appetite for specific macronutrients like fat and protein, comparable to the effects of FGF21 on carbohydrate intake," Potthoff says. "If so, how do those signals intertwine to regulate the neural sensing of different macronutrients?"

More information: *Cell Metabolism*, von Holstein-Rathlou and BonDurant et al: "FGF21 Mediates Endocrine Control of Simple Sugar Intake and Sweet Taste Preference by the Liver"

[dx.doi.org/10.1016/j.cmet.2015.12.003](https://doi.org/10.1016/j.cmet.2015.12.003)

Provided by University of Iowa

Citation: Study identifies liver-generated hormone that regulates 'sweet tooth' (2015, December 24) retrieved 14 February 2024 from <https://medicalxpress.com/news/2015-12-liver-generated-hormone-sweet-tooth.html>

<p>This document is subject to copyright. Apart from any fair dealing for the purpose of private study or research, no part may be reproduced without the written permission. The content is provided for information purposes only.</p>
--