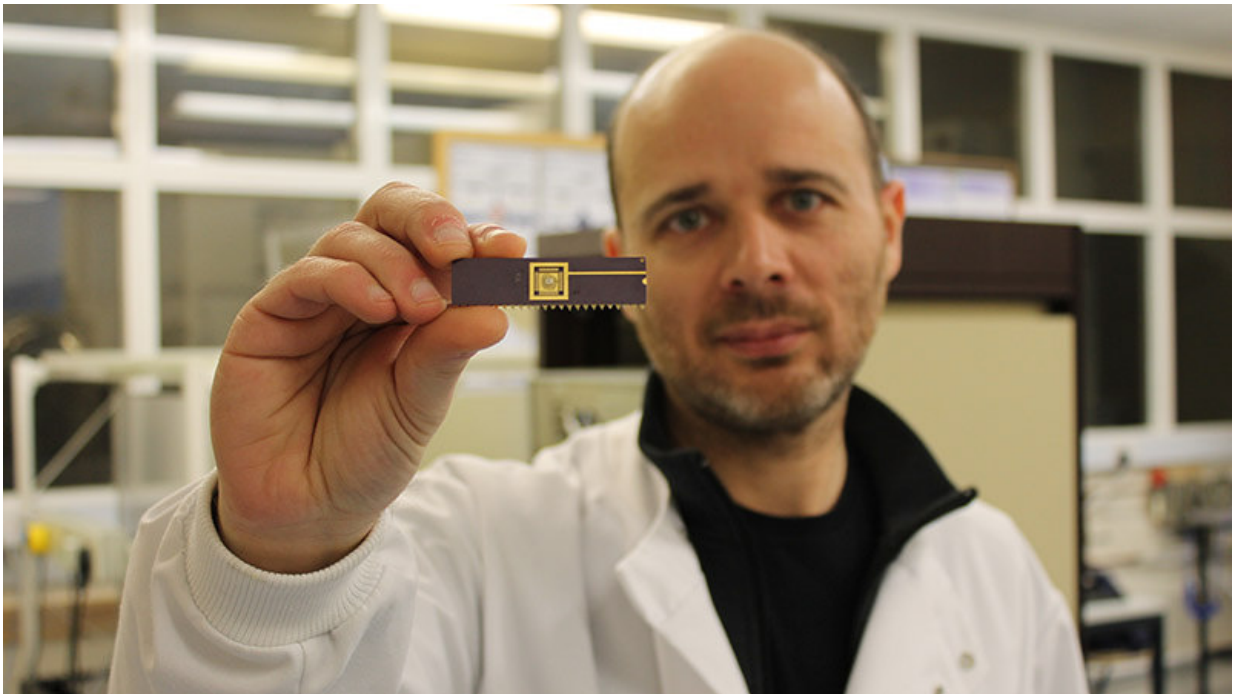


Developing biosensor devices for better cancer diagnosis

August 17 2016



Dr Pedro Estrela in the laboratory with a biosensor device. Credit: University of Bath

Diagnosing cancer early on can greatly improve a patient's prognosis. Biopsies and screening are the most common and accurate means currently used to identify cancer markers in the blood. But samples have to be sent to central laboratories for analysis, making the process expensive and time-consuming. Procedures for taking samples can also

be invasive and distressing for the patient.

Biosensors provide cheaper, faster and more discreet alternatives to cancer detection

Biosensor technology is a continually evolving area of research. More efficient, sensitive and stable devices are being developed all the time. Yet, very few of these devices make it to clinical trials for [cancer diagnosis](#).

A new collaborative project between Bath and the University of São Paulo (USP) is developing novel diagnostic tools to spot cancer early on. The teams, led by Dr Pedro Estrela (Bath) and Professor Marcelo Mulato (USP) are creating sensors that will accurately detect and measure early-stage cancer biomarkers via point-of-care testing.

The research integrates existing electrochemical and semiconductor-based biosensors developed by the two universities for in vitro cancer diagnostics. The teams are using their combined expertise to develop techniques that enhance the sensitivity and selectivity of the sensors. The result will be innovative, robust and ultra-sensitive biosensors that detect biomarkers specific to both prostate and breast cancer.

Dr Estrela said: 'Prostate and breast cancer are the two most common types of cancer in the UK. Detecting them in their infancy increases the chance of successful treatment and reduces mortality rates. Symptoms aren't always obvious at an early stage with both of these types of cancer so finding alternative methods of diagnosis addresses a real medical need.'

Innovative approaches that could change lives

Another device in development will detect panels of microRNAs in the blood, which are linked to the development and progression of cancer. The biosensor will analyse 'molecular fingerprints' of microRNAs to reveal precise and important information about the stage and subtype of [prostate cancer](#). The information could help determine the best choice of therapy for individual patients.

'The devices offer a less invasive and more efficient alternative to current diagnostics. They are designed to analyse markers associated with cancer in the blood more accurately. Our goal is to make these devices widely available in primary care in the future. Eventually, we want to see biosensors used as part of regular checks in hospitals and GP surgeries across the world.'

Bringing together complementary research expertise

We are funding this collaboration with São Paulo Research Foundation (FAPESP) through SPRINT - São Paulo Researchers in International Collaboration.

The two-year project supports ongoing research and cooperation between the two universities under the umbrella of biosensor technologies. It draws on elements from Dr Estrela's work on prostate cancer and Professor Mulato's on [breast cancer](#).

Since the project started in November, researcher visits have taken place between Bath and São Paulo, opening up an exchange of knowledge. The project promises to lead to further collaborations to advance biosensor research for [cancer](#) diagnosis in the future.

Provided by University of Bath

Citation: Developing biosensor devices for better cancer diagnosis (2016, August 17) retrieved 20 July 2023 from <https://medicalxpress.com/news/2016-08-biosensor-devices-cancer-diagnosis.html>

This document is subject to copyright. Apart from any fair dealing for the purpose of private study or research, no part may be reproduced without the written permission. The content is provided for information purposes only.