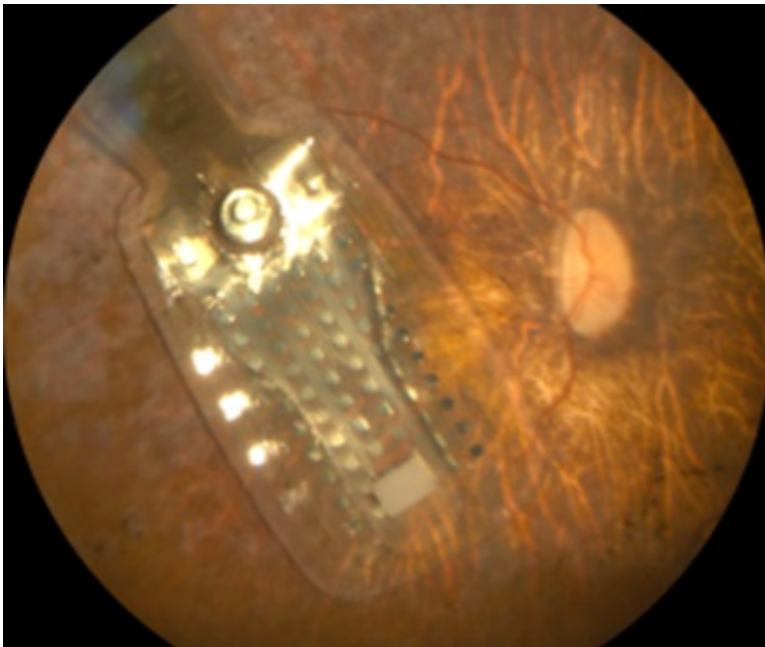


After blindness, the adult brain can learn to see again

October 25 2016



Fundus of the patient's eye implanted with Argus II Retinal 98 Prosthesis, taken soon after the surgery. Credit: Castaldi E, Cicchini GM, Cinelli L, Biagi L, Rizzo S, Morrone MC (2016).

More than 40 million people worldwide are blind, and many of them reach this condition after many years of slow and progressive retinal degeneration. The development of sophisticated prostheses or new light-responsive elements, aiming to replace the disrupted retinal function and to feed restored visual signals to the brain, has provided new hope. However, very little is known about whether the brain of blind people

retains residual capacity to process restored or artificial visual inputs.

A new study publishing 25 October in the open-access journal *PLOS Biology* by Elisa Castaldi and Maria Concetta Morrone from the University of Pisa, Italy, and colleagues investigates the [brain](#)'s capability to process visual information after many years of total blindness, by studying patients affected by Retinitis Pigmentosa, a hereditary illness of the retina that gradually leads to complete blindness.

The perceptual and brain responses of a group of patients were assessed before and after the implantation of a prosthetic implant that senses [visual signals](#) and transmits them to the brain by stimulating axons of [retinal ganglion cells](#). Using [functional magnetic resonance](#) imaging, the researchers found that patients learned to recognize unusual visual stimuli, such as flashes of light, and that this ability correlated with increased brain activity. However, this change in brain activity, observed at both the thalamic and cortical level, took extensive training over a long period of time to become established: the more the patient practiced, the more their brain responded to visual stimuli, and the better they perceived the [visual stimuli](#) using the implant. In other words, the brain needs to learn to see again.

The results are important as they show that after the implantation of a prosthetic device the brain undergoes plastic changes to re-learn how to make use of the new artificial and probably aberrant visual signals. They demonstrate a residual plasticity of the sensory circuitry of the adult brain after many years of deprivation, which can be exploited in the development of new prosthetic implants.

More information: Castaldi E, Cicchini GM, Cinelli L, Biagi L, Rizzo S, Morrone MC (2016) Visual BOLD Response in Late Blind Subjects with Argus II Retinal Prosthesis. *PLoS Biol* 14(10): e1002569. [DOI: 10.1371/journal.pbio.1002569](#)

Provided by Public Library of Science

Citation: After blindness, the adult brain can learn to see again (2016, October 25) retrieved 1 April 2023 from <https://medicalxpress.com/news/2016-10-adult-brain.html>

This document is subject to copyright. Apart from any fair dealing for the purpose of private study or research, no part may be reproduced without the written permission. The content is provided for information purposes only.