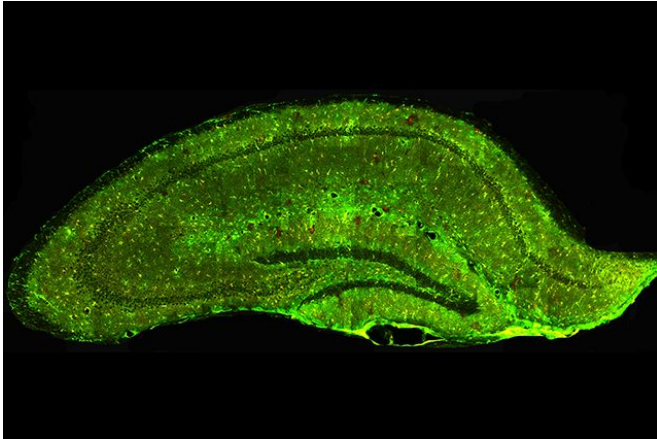


Researchers study astrocyte cells that may contribute to ALS and Alzheimer's

9 December 2016, by David Olmos



The hippocampus of a mouse with the artificial Cre/ERT2 gene, showing astrocytes glowing green. Credit: Baljit Khakh lab/David Geffen School of Medicine at UCLA

An achievement by UCLA neuroscientists could lead to a better understanding of astrocytes, a type of cell in the brain that is thought to play a role in Lou Gehrig's disease, also called amyotrophic lateral sclerosis, or ALS; Alzheimer's disease; Huntington's disease; and other neurological disorders.

The researchers are the first to have bred mice in which an artificial gene called Cre/ERT2, a basic tool for studying the functions of cells, can be activated exclusively in [astrocytes](#). A paper describing their work was published online today in the journal *Neuron*.

Neuroscientists have been trying for years to engineer mice in which Cre/ERT2 or other artificial genes can be activated just in astrocytes without significant "leakage" into other cell types.

"We'll now be able to delete or mutate astrocyte genes that are suspected of contributing to

diseases such as ALS to see whether they really do contribute," said Baljit Khakh, professor of physiology and neurobiology at the David Geffen School of Medicine at UCLA. "That, in turn, could open up many new strategies for treating those diseases."

To give the mice the Cre/ERT2 gene, Khakh and colleagues inserted it into another gene, *Aldh1-l1*. *Aldh1-l1* had been found in a previous study to only be active in adult astrocytes.

Cre/ERT2 normally can be activated in mice by giving them a drug called tamoxifen, which is best known as a [breast cancer treatment](#). The UCLA researchers, however, built the combination gene so that tamoxifen could only "turn on" the Cre/ERT2's when it was in astrocytes. The researchers also verified that the gene becomes active in virtually all astrocytes in the adult mouse brain but in virtually no other cells.

Scientists have known that astrocytes perform a variety of routine functions throughout the brain, and it is believed that they have a major influence on how the brain works and how humans and other animals behave. But what scientists haven't been able to explain very well is how, at the molecular level, astrocytes accomplish all of these functions.

The UCLA advance should provide a powerful tool that scientists can use to solve that puzzle.

"The availability of these mice makes possible experiments that I think will keep researchers busy for many years to come," Khakh said.

In initial demonstrations, Khakh and his team used the mice to learn more about a phenomenon called "calcium signaling," through which astrocytes influence the functions of neurons, and also to identify for the first time the genes that are normally active in adult mouse astrocytes.

Astrocytes have also been linked to several neurological diseases, including ALS, a usually fatal disease in which neurons that control muscles face progressive destruction. Several recent studies on ALS have identified astrocytes as a significant cause of the deaths of these neurons. How astrocytes end up harming neurons in ALS remains a mystery, but the [mice](#) with Cre/ERT2 should enable researchers to tackle that question more effectively than they could have before, Khakh said.

More information: Rahul Srinivasan et al. New Transgenic Mouse Lines for Selectively Targeting Astrocytes and Studying Calcium Signals in Astrocyte Processes In Situ and In Vivo, *Neuron* (2016). [DOI: 10.1016/j.neuron.2016.11.030](https://doi.org/10.1016/j.neuron.2016.11.030)

Provided by University of California, Los Angeles

APA citation: Researchers study astrocyte cells that may contribute to ALS and Alzheimer's (2016, December 9) retrieved 12 November 2022 from <https://medicalxpress.com/news/2016-12-astrocyte-cells-contribute-als-alzheimer.html>

This document is subject to copyright. Apart from any fair dealing for the purpose of private study or research, no part may be reproduced without the written permission. The content is provided for information purposes only.