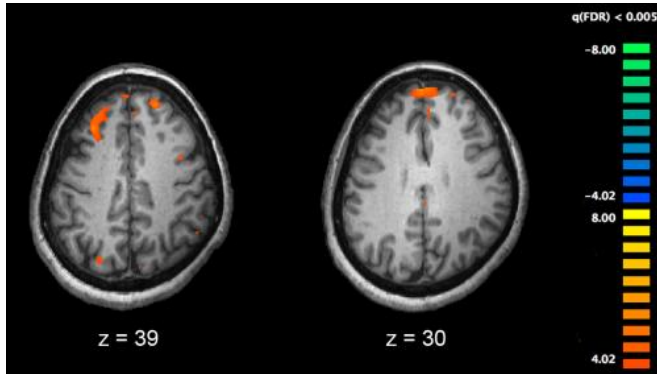


# Major research project provides new clues to schizophrenia

14 March 2017



Functional magnetic resonance imaging (fMRI) and other brain imaging technologies allow for the study of differences in brain activity in people diagnosed with schizophrenia. The image shows two levels of the brain, with areas that were more active in healthy controls than in schizophrenia patients shown in orange, during an fMRI study of working memory. Credit: Kim J, Matthews NL, Park S./PLoS One.

Researchers at Karolinska Institutet collaborating in the large-scale Karolinska Schizophrenia Project are taking an integrative approach to unravel the disease mechanisms of schizophrenia. In the very first results now presented in the prestigious scientific journal *Molecular Psychiatry*, the researchers show that patients with schizophrenia have lower levels of the vital neurotransmitter GABA as well as changes in the brain's immune cells.

Schizophrenia is one of the most disabling psychiatric diseases and affects approximately one per cent of the population. It commonly onsets in late adolescence and is often a life-long condition with symptoms such as delusions, hallucinations, and anxiety. The disease mechanisms are largely unknown, which has hampered the development of new drugs. The drugs currently available are designed to alleviate the symptoms, but are only

partly successful, as only 20 per cent of the patients become symptom-free.

The Karolinska Schizophrenia Project (KaSP) brings together researchers from a number of different scientific disciplines to build up a comprehensive picture of the [disease mechanisms](#) and to discover new targets for drug therapy. Patients with an acute first-episode psychosis are recruited and undergo extensive tests and investigations. Cognitive function, genetic variation, biochemical anomalies as well as brain structure and function are analysed using the latest techniques and then compared with healthy peers.

The first results from the project are now presented in two studies published in the journal *Molecular Psychiatry*. One of the studies shows that patients with newly debuted schizophrenia have lower levels of the neurotransmitter GABA in their cerebrospinal fluid than healthy people and that the lower the concentration of GABA the more serious their symptoms are.

GABA is involved in most brain functions and along with glutamate it accounts for almost 90 per cent of all signal transmission. While glutamate stimulates brain activity, GABA inhibits it, and the two neurotransmitters interact with each other.

"Over the years, animal studies have suggested a link between decreased levels of GABA and schizophrenia," says Professor Göran Engberg at Karolinska Institutet's Department of Physiology and Pharmacology. "Our results are important because they clinically substantiate this hypothesis."

The other study used the imaging technique of positron emission tomography (PET) to show that patients with untreated schizophrenia have lower levels of TSPO (translocator protein), which is expressed on [immune cells](#) such as microglia and astrocytes.

"Our interpretation of the results is an altered function of immune cells in the brain in early-stage schizophrenia," says Senior lecturer Simon Cervenka at Karolinska Institutet's Department of Clinical Neuroscience.

The results of the two studies provide new clues to the pathological mechanisms of [schizophrenia](#), but it is unclear if the changes are the cause or the result of the disease. Follow-up studies are now underway to examine what causes the anomalies and how these biological processes can be influenced to change the progression of the disease.

KaSP is a collaboration between clinical and preclinical research groups at Karolinska Institutet and four psychiatric clinics under Stockholm County Council.

**More information:** "CSF GABA is reduced in first-episode psychosis and associates to symptom severity". Orhan F, Fatouros-Bergman H, Gojny M, Malmqvist A, Piehl F, Karolinska Schizophrenia Project (KaSP) Consortium, Cervenka S, Collste K, Victorsson P, Sellgren CM, Flyckt L, Erhardt S, Engberg G. *Molecular Psychiatry*, online 14 March 2017. [DOI: 10.1038/MP.2017.25](https://doi.org/10.1038/MP.2017.25)

"Lower levels of the glial cell marker TSPO in drug-naive first-episode psychosis patients as measured using PET and [11C]PBR28". Collste K, Plavén-Sigraý P, Fatouros-Bergman H, Victorsson P, Schain M, Forsberg A, Amini N, Aeinehband S, Karolinska Schizophrenia Project (KaSP) consortium, Erhardt S, Halldin C, Flyckt L, Farde L, Cervenka S. *Molecular Psychiatry*, online 14 February 2017. [DOI: 10.1038/mp.2016.247](https://doi.org/10.1038/mp.2016.247)

Provided by Karolinska Institutet

APA citation: Major research project provides new clues to schizophrenia (2017, March 14) retrieved 27 August 2022 from <https://medicalxpress.com/news/2017-03-major-clues-schizophrenia.html>

*This document is subject to copyright. Apart from any fair dealing for the purpose of private study or research, no part may be reproduced without the written permission. The content is provided for information purposes only.*