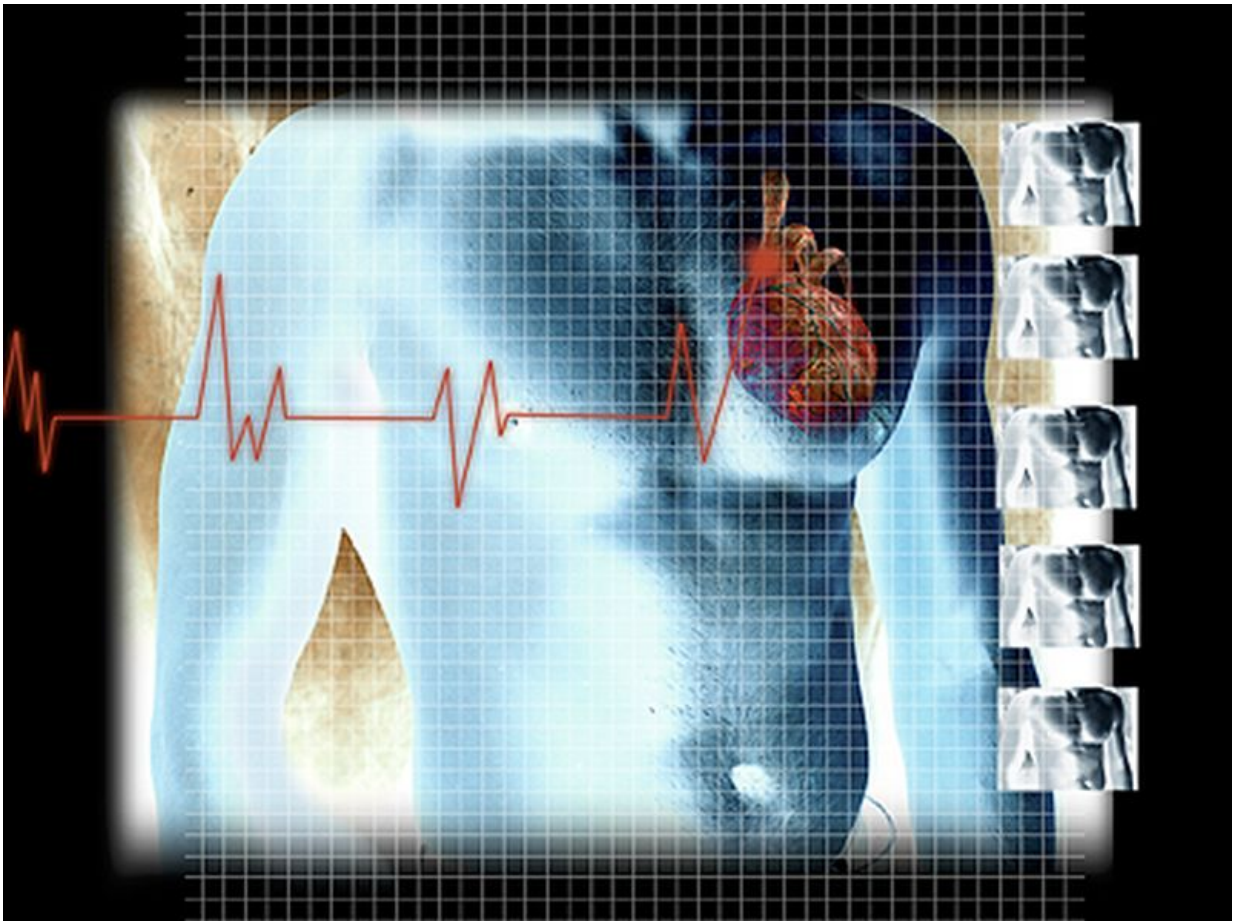


# Most common arrhythmia: intra-atrial re-entrant tachycardia

August 14 2017

---



(HealthDay)—For patients with congenital heart disease and atrial

arrhythmias, the most common presenting arrhythmia is intra-atrial re-entrant tachycardia (IART), according to a study published in the Aug. 15 issue of the *Journal of the American College of Cardiology*.

Fabien Labombarda, M.D., from the Montreal Heart Institute, and colleagues conducted a multicenter cohort study involving 482 patients with [congenital heart disease](#) and atrial arrhythmias.

The researchers found that IART was the most common presenting [arrhythmia](#) (61.6 percent), followed by atrial fibrillation and focal atrial tachycardia (28.8 and 9.5 percent, respectively). There was an increase in the proportion of arrhythmias due to IART with increasing congenital [heart](#) disease complexity (47.2, 62.1, and 67.0 percent, respectively, for simple, moderate, and complex defects). Among those aged  $\geq 50$  years, atrial fibrillation increased with age to surpass IART as the most common arrhythmia (51.2 versus 44.2 percent). Independent associations with [atrial fibrillation](#) were seen for older age (odds ratio, 1.024 per year) and hypertension (odds ratio, 2.00). The predominant arrhythmia pattern was paroxysmal, persistent, and permanent in 62.3, 28.2, and 9.5 percent during a mean follow-up of  $11.3 \pm 9.4$  years. There was an increase in permanent atrial arrhythmias from 3.1 to 22.6 percent in patients aged

Citation: Most common arrhythmia: intra-atrial re-entrant tachycardia (2017, August 14) retrieved 31 December 2022 from

<https://medicalxpress.com/news/2017-08-common-arrhythmia-intra-atrial-re-entrant-tachycardia.html>

This document is subject to copyright. Apart from any fair dealing for the purpose of private study or research, no part may be reproduced without the written permission. The content is provided for information purposes only.