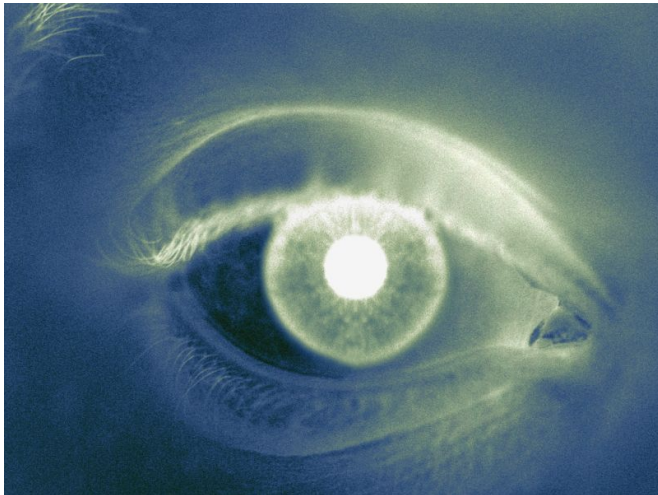


Retinal emboli linked to cardiac risk factors, kidney disease

31 August 2017



ethnicity (odds ratio, 3.58 compared with Malay ethnicity), hypertension (odds ratio, 1.95), [chronic kidney disease](#) (odds ratio, 2.05), creatinine level (odds ratio, 1.13 per standard deviation increase), [glomerular filtration rate](#) (odds ratio, 0.67 per standard deviation increase), and history of stroke (odds ratio, 3.45) were associated with prevalent retinal emboli in multivariable-adjusted analysis.

"If these data are confirmed in longitudinal studies, they would suggest that persons with retinal emboli may require both general cardiovascular and renal assessment," the authors write.

More information: [Abstract/Full Text Editorial](#)

Copyright © 2017 [HealthDay](#). All rights reserved.

(HealthDay)—Retinal emboli are associated with conventional cardiovascular risk factors, stroke, and chronic kidney disease, according to a study published online Aug. 24 in *JAMA Ophthalmology*.

Ning Cheung, M.D., from the Singapore Eye Research Institute, and colleagues examined the prevalence of and risk factors for retinal emboli in a large contemporary multiethnic Asian population. Data were included for 10,033 Chinese, Malay, and Indian adults aged 40 to 80 years. Retinal emboli were ascertained from retinal photographs obtained from both eyes of all participants.

The researchers found that 99.5 percent of the participants had gradable retinal photographs. Overall, 0.9 percent of participants had retinal emboli; the overall person-specific, age-standardized prevalence of retinal emboli was 0.75 percent, with prevalence varying in the cohorts (0.98, 0.73, and 0.44 percent among Indian, Chinese, and Malay cohorts, respectively). Older age (odds ratio, 1.22 per five-year increase), Indian

APA citation: Retinal emboli linked to cardiac risk factors, kidney disease (2017, August 31) retrieved 12 November 2022 from <https://medicalxpress.com/news/2017-08-retinal-emboli-linked-cardiac-factors.html>

This document is subject to copyright. Apart from any fair dealing for the purpose of private study or research, no part may be reproduced without the written permission. The content is provided for information purposes only.