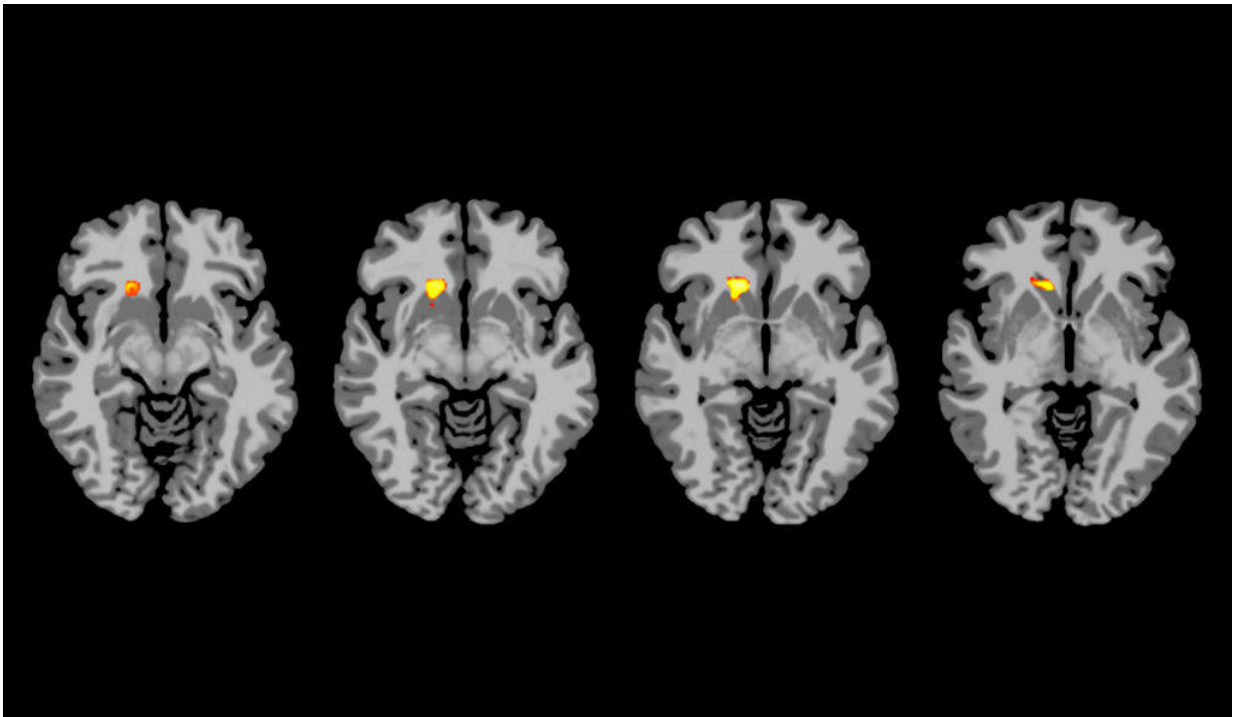


Brain scans show why some type 1 diabetics miss low blood sugar cues

February 2 2018, by Ziba Kashef



Credit: Yale University

The brains of people with type 1 diabetes react differently to low blood sugar compared with healthy adults, say Yale researchers.

The findings of their new study, published in the *Journal of Clinical Investigation*, shed light on why many type 1 diabetics fail to respond to

potentially dangerous drops in their [blood sugar](#) levels.

In healthy, non-diabetic adults, a drop in blood sugar stimulates the body to make glucose and also seek food. But many individuals with type 1 diabetes don't have the same responses to reductions in blood sugar that can result from [insulin treatment](#).

To investigate why, the Yale-led team conducted MRI scans of individuals with type 1 diabetes and healthy adults who had been given insulin to induce [low blood sugar](#). The [brain](#) images showed that in healthy individuals, low blood sugar caused changes in four key regions of the brain that are linked to reward, motivation, and decision making.

By contrast, about half of the type 1 diabetics exhibited altered activity only in areas of the brain associated with attention. The rest of the diabetics failed to show any brain changes in response to even mild low blood sugar.

The difference in the two groups of diabetics was that some still had what's called "hypoglycemia awareness"—the ability to sense the physical symptoms of low blood sugar—and the others did not.

The findings explain why some type 1 diabetics who have adapted to having low blood sugar don't respond when their blood sugar gets too low, the researchers said.

"There is a progressive loss of coordinated brain response to low blood sugar as you go from healthy adult to aware and unaware," said Janice Hwang, M.D., assistant professor of medicine and first author on the study. "The first areas in the brain to go are associated with regulating feeding behavior."

The study can also help researchers determine how to restore low blood

sugar awareness in patients who have lost it, Hwang noted. New technologies designed to monitor blood sugar, could play a part in that effort, she said.

More information: Janice Jin Hwang et al. Hypoglycemia unawareness in type 1 diabetes suppresses brain responses to hypoglycemia, *Journal of Clinical Investigation* (2018). [DOI: 10.1172/JCI97696](https://doi.org/10.1172/JCI97696)

Provided by Yale University

Citation: Brain scans show why some type 1 diabetics miss low blood sugar cues (2018, February 2) retrieved 30 March 2023 from <https://medicalxpress.com/news/2018-02-brain-scans-diabetics-blood-sugar.html>

This document is subject to copyright. Apart from any fair dealing for the purpose of private study or research, no part may be reproduced without the written permission. The content is provided for information purposes only.