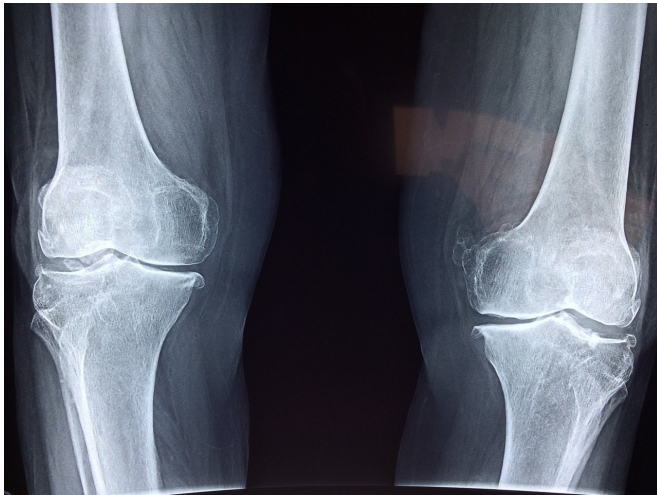


# Dietary carbohydrates could lead to osteoarthritis, new study finds

9 August 2018



Credit: CC0 Public Domain

Do your knees ache? According to new findings from the Oklahoma Medical Research Foundation, your diet could be a culprit.

In a study led by OMRF scientist Tim Griffin, Ph.D., researchers found that the carbohydrate composition of diets increased the [risk](#) of osteoarthritis in laboratory mice—even when the animals didn't differ in weight.

"We know increased body fat elevates risk, but we haven't appreciated as much how diet itself affects the disease risk," said Griffin. "These findings give us new clues that there can be significant dietary effects linked to increased OA risk even in the absence of obesity."

Osteoarthritis, or OA, is the most common form of arthritis and the most widespread form of disability in the country, affecting nearly 27 million people in the U.S. It occurs when the cartilage that cushions bones in the joints breaks down and wears away, causing the bones to rub against one another.

Several factors can increase risk, including high-impact physical jobs, previous joint injuries, age and genetics, but carrying extra body weight is among the most proven contributors.

"Obesity is the one of the most significant factors for developing disease in the knee joint," said Griffin. "However, therapeutic strategies to prevent or treat obesity-associated OA are limited because of the uncertainty about the root cause of the disease."

To study how, exactly, obesity contributes to osteoarthritis, Griffin and his lab placed groups of mice on different high-fat diets. However, over time, they observed that the carbohydrate makeup of the rodents' low-fat control diet was alone sufficient to alter their chances of developing OA.

The primary culprits: fiber and sugar.

In particular, Griffin's team found that changing the amount of sucrose—table sugar—and fiber in the diet altered OA pathology in the rodents. The high-sucrose diet increased signs of joint inflammation, while the high-fiber diet caused changes in cartilage genes and cellular stress-response pathways.

While the study involved mice, Griffin said the findings could ultimately have human implications.

"It's important to understand how our [diet](#) affects the health of our joints," he said. "We were surprised to see so many OA-related differences between the two high-carb diets even though body weight and body fat were the same."

Griffin next plans to investigate how different types of dietary fiber and other components of our diets can contribute to OA, and also look at the role the body's microbiome and gut bacteria play in the disease.

**More information:** Elise L. Donovan et al, Independent effects of dietary fat and sucrose content on chondrocyte metabolism and osteoarthritis pathology in mice, *Disease Models & Mechanisms* (2018). [DOI: 10.1242/dmm.034827](https://doi.org/10.1242/dmm.034827)

Provided by Oklahoma Medical Research Foundation

APA citation: Dietary carbohydrates could lead to osteoarthritis, new study finds (2018, August 9) retrieved 19 June 2022 from <https://medicalxpress.com/news/2018-08-dietary-carbohydrates-osteoarthritis.html>

*This document is subject to copyright. Apart from any fair dealing for the purpose of private study or research, no part may be reproduced without the written permission. The content is provided for information purposes only.*