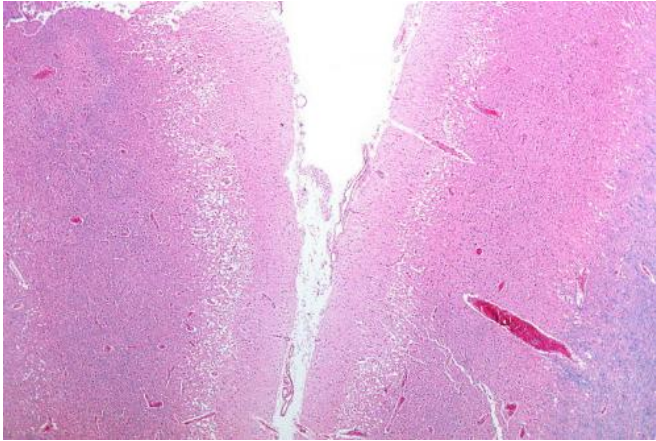


Stroke doubles dementia risk, concludes large-scale study

August 31 2018



Micrograph showing cortical pseudolaminar necrosis, a finding seen in strokes on medical imaging and at autopsy. H&E-LFB stain. Credit: Nephron/Wikipedia

People who have had a stroke are around twice as likely to develop dementia, according to the largest study of its kind ever conducted.

The University of Exeter Medical School led the study which analysed data on stroke and [dementia](#) risk from 3.2 million people across the world. The link between stroke and dementia persisted even after taking into account other dementia risk factors such as blood pressure, diabetes and cardiovascular disease. Their findings give the strongest evidence to date that having a stroke significantly increases the risk of dementia.

The study builds on previous research which had established the link between stroke and dementia, though had not quantified the degree to which stroke actually increased dementia risk. To better understand the link between the two, researchers analysed 36 studies where participants had a history of stroke, totalling data from 1.9 million people. In addition, they analysed a further 12 studies that looked at whether participants had a

recent stroke over the study period, adding a further 1.3 million people. The new research, published in the leading dementia journal *Alzheimer's & Dementia: The Journal of the Alzheimer's Association*, is the first meta-analysis in the area.

Dr. Ilianna Lourida, of the University of Exeter Medical School, said: "We found that a history of stroke increases dementia risk by around 70%, and recent strokes more than doubled the risk. Given how common both stroke and dementia are, this strong link is an important finding. Improvements in stroke prevention and post-stroke care may therefore play a key role in dementia prevention."

According to the World Health Organisation, 15 million people have a stroke each year. Meanwhile, around 50 million people globally have dementia—a number expected to almost double over 20 years, reaching 131 million by 2050.

Stroke characteristics such as the location and extent of brain damage may help to explain variation in dementia risk observed between studies, and there was some suggestion that dementia risk may be higher for men following stroke.

Further research is required to clarify whether factors such as ethnicity and education modify dementia risk following stroke. Most people who have a stroke do not go on to develop dementia, so further research is also needed to establish whether differences in post-stroke care and lifestyle can reduce the risk of dementia further.

Dr. David Llewellyn, from the University of Exeter Medical School, concluded: "Around a third of dementia cases are thought to be potentially preventable, though this estimate does not take into account the risk associated with [stroke](#). Our findings indicate that this figure could be even higher, and reinforce the importance of protecting the blood supply to the brain when attempting to

reduce the global burden of dementia."

More information: 'Stroke and dementia risk: A systematic review and meta-analysis', *Alzheimer's and Dementia*, 2018.

Provided by University of Exeter

APA citation: Stroke doubles dementia risk, concludes large-scale study (2018, August 31) retrieved 10 December 2022 from <https://medicalxpress.com/news/2018-08-dementia-large-scale.html>

This document is subject to copyright. Apart from any fair dealing for the purpose of private study or research, no part may be reproduced without the written permission. The content is provided for information purposes only.