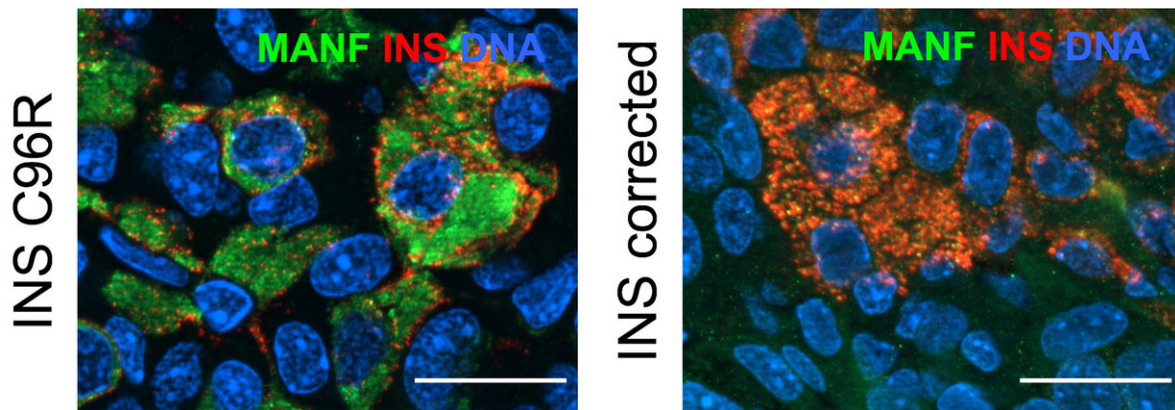


Scientists discover mechanisms behind neonatal diabetes

December 18 2018



Stem cell-derived pancreatic beta cells transplanted in mice. In the left the cells carrying insulin mutations are shown in green due to the cellular stress reaction. In the right the mutation-corrected healthy beta cells are red. Credit: Otonkoski Lab / University of Helsinki

Insulin is secreted from the beta cells located in the pancreas, and the hormone is crucial for the maintenance of normal blood sugar levels. Deficiency of insulin leads to diabetes, characterized by elevated blood sugar. Diabetes most commonly presents in childhood as type 1 diabetes and in adults as type 2 diabetes.

Sometimes [diabetes](#) is diagnosed in very small babies, during the first six

months of life. In these cases, mutations in the gene encoding insulin are often found.

These mutations are only found in one copy of the gene; that means that half of the produced insulin is normal, which should be enough to secure normal blood sugar. However, this is not the case: Insulin secretion stops totally after a few months. It is believed that this is caused by a toxic effect of the mutant insulin inside the cell, but the exact mechanisms are poorly understood.

Mutant insulin is known to cause a chronic [stress](#) reaction in the beta cell, and it has been thought that this leads to the death of the cell. It is important to understand the detailed consequences of beta-cell stress, because this may help to develop drugs for the prevention of both rare and common forms of diabetes.

"We now had the chance to test this with real patient-derived cells," says Professor Timo Otonkoski from the University of Helsinki.

The researchers created a human disease model using stem cells from people carrying insulin gene mutations; then they corrected cells using a gene editing technique called CRISPR. The mutant and corrected [stem cells](#) were then induced to turn into insulin-secreting beta cells and the researchers followed the function of the cells after transplanting them in mice.

"The main finding of the study was that these cells do not die from [chronic stress](#), but their growth and development is disturbed. These effects are mediated through processes that could potentially be targeted by drugs," Dr. Diego Balboa says.

"In this study, we describe mechanisms linking chronic cellular stress to the poor development of the [insulin](#)-producing cells. A strongly reduced

number of beta-[cells](#) will cause diabetes immediately, but even a milder defect will increase the risk of diabetes later in life. Understanding the molecular mechanisms of these processes may help in devising ways to preserve the mass and function of [beta cells](#)," Otonkoski states.

More information: Diego Balboa et al, Insulin mutations impair beta-cell development in a patient-derived iPSC model of neonatal diabetes, *eLife* (2018). [DOI: 10.7554/eLife.38519](https://doi.org/10.7554/eLife.38519)

Provided by University of Helsinki

Citation: Scientists discover mechanisms behind neonatal diabetes (2018, December 18) retrieved 24 January 2023 from <https://medicalxpress.com/news/2018-12-scientists-mechanisms-neonatal-diabetes.html>

<p>This document is subject to copyright. Apart from any fair dealing for the purpose of private study or research, no part may be reproduced without the written permission. The content is provided for information purposes only.</p>
--