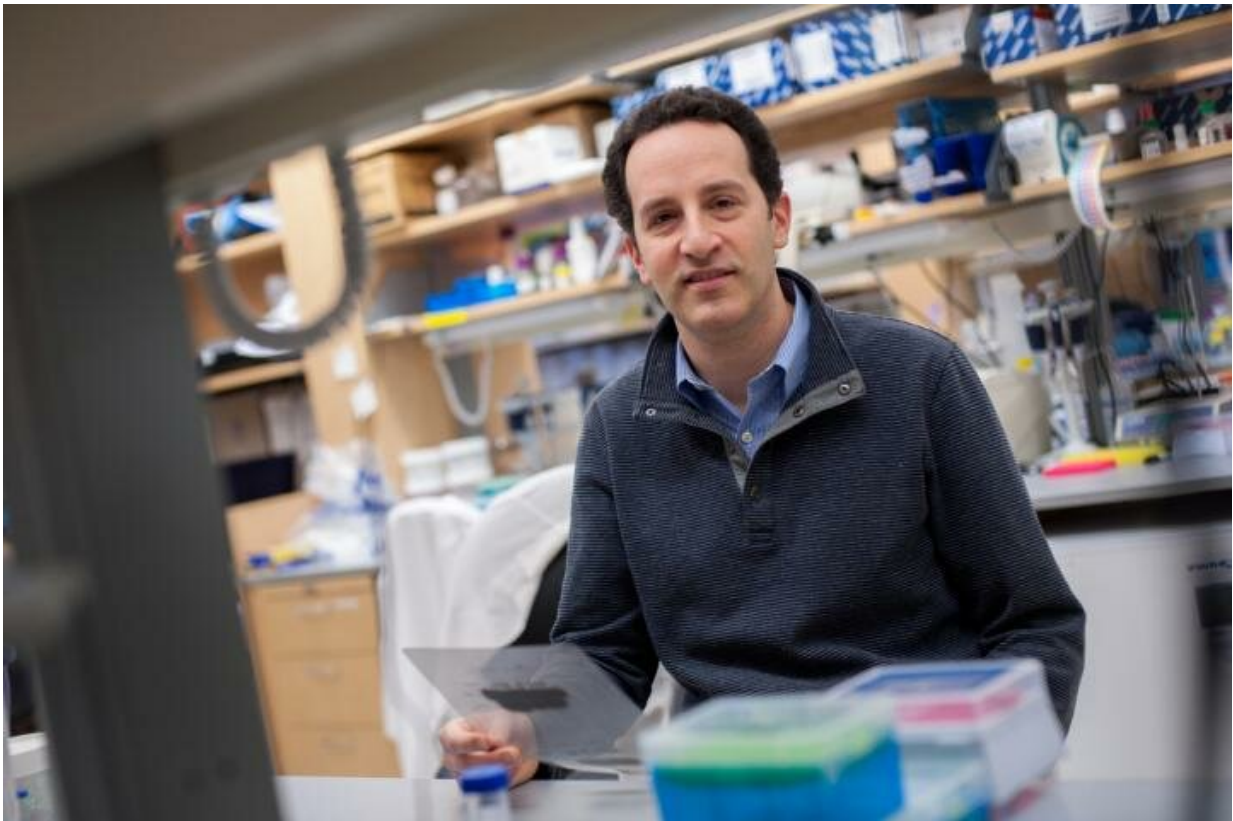


# Researchers optimize gene editing for SCD and beta thalassemia

March 28 2019

---



Hematologist Daniel Bauer, MD, PhD in the lab Credit: KC Cohen/Boston Children's Hospital

Researchers at Dana-Farber/Boston Children's Cancer and Blood Disorders Center and the University of Massachusetts Medical School

have developed a strategy to treat two of the most common inherited blood diseases—sickle cell disease and beta thalassemia—applying CRISPR-Cas9 gene editing to patients' own blood stem cells. Described this week in *Nature Medicine* and in a January report in the journal *Blood*, their approach overcomes prior technical challenges, editing blood stem cells more efficiently than in the past.

The two studies show that the gene-edited cells generate genetically corrected [red blood cells](#) producing functional hemoglobin.

"We think our work defines a strategy that could lead to the cure of common hemoglobin disorders," says Daniel Bauer, MD, Ph.D., an attending physician with Dana-Farber/Boston Children's and a senior author on both papers. "Combining gene editing with an autologous stem-cell transplant could be a therapy for [sickle-cell disease](#), [beta-thalassemia](#) and other blood disorders."

Together, sickle cell disease and beta-thalassemia affect 332,000 conceptions or births worldwide each year, according to the World Health Organization. Both diseases involve mutations in the gene for beta globin protein. In beta-thalassemia, the mutations prevent red blood cells from producing enough of the oxygen-carrying hemoglobin molecule, leading to anemia. In sickle cell disease, the mutation causes hemoglobin to change shape, distorting red blood cells into stiff "sickle" shapes that block up blood vessels.

### **More efficient editing**

The *Nature Medicine* study used CRISPR-Cas9 technology, in particular a Cas9 protein modified by a team led by Scot Wolfe, Ph.D. at UMass Medical School, to optimize gene editing. In previous attempts to edit the genomes of human blood stem and progenitor cells, the efficiency, specificity and long-term stability of the edits once the cells engraft in

the bone marrow have varied. The new technique improves the targeting and durability of the edits.

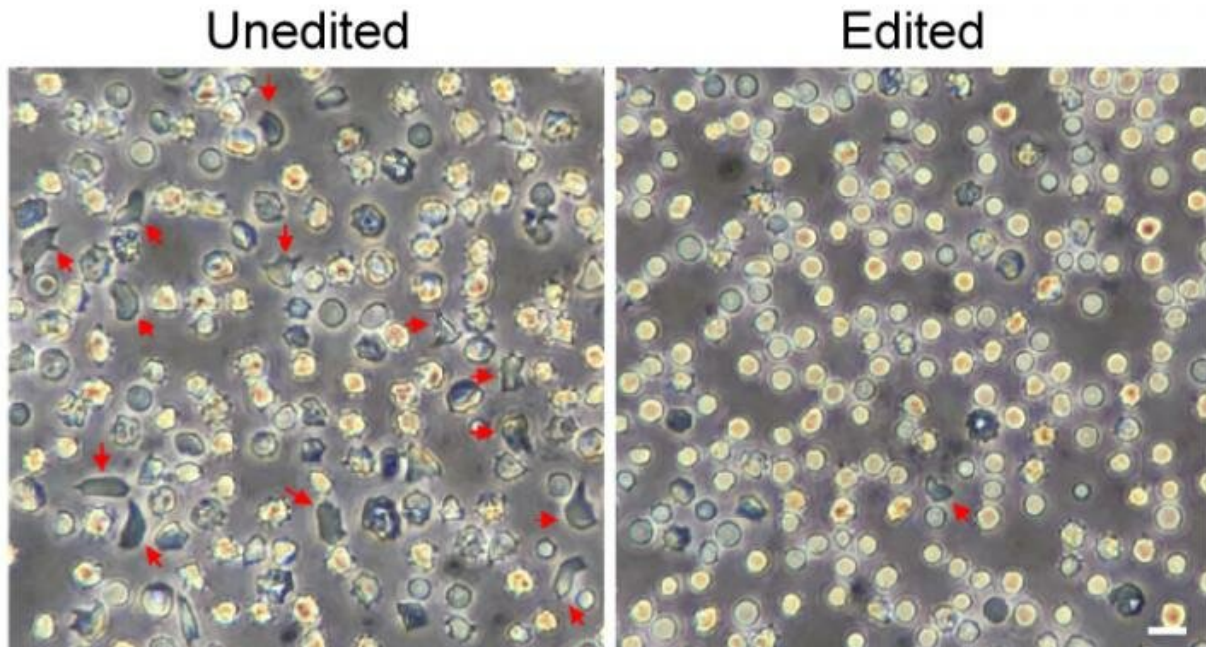
"Efficient editing of the blood stem cell population—ideally at rates approaching 100 percent—is critical to achieve a durable [therapeutic effect](#) for patients," says Wolfe, a professor in the Department of Molecular, Cell and Cancer Biology at UMass Medical School. "Progress toward this goal has been advancing through the contributions of multiple laboratories in the scientific community. My research team, in collaboration with the Bauer laboratory, focused on improving the efficiency of delivery and nuclear entry of the CRISPR-Cas9 technology to achieve nearly complete therapeutic editing of the entire blood stem cell population."

Bauer's team used the strategy to make a highly targeted edit. Previous work at Boston Children's had showed that inactivating a gene called BCL11A allows red blood cells to keep producing a fetal form of hemoglobin even after birth. Fetal hemoglobin doesn't sickle and can stand in for defective "adult" hemoglobin. More recently, Bauer found a safer target: a genetic enhancer of BCL11A that is active only in red blood cells.

"With our new very efficient protocol, we can edit the BCL11A enhancer in nearly all [blood stem cells](#) we collect, overcoming some of the technical challenges of editing these cells," says Bauer. "In our experiments, more than 95 percent of copies of the enhancer sequence were changed in a way we expect would be therapeutic."

The strategy enabled mice carrying blood stem cells from patients with sickle cell disease to produce red blood cells with enough fetal hemoglobin to prevent cell sickling. The team showed that the gene-edited cells, infused back into the bloodstream, engrafted in the bone marrow and produced genetically corrected red blood cells. Later, when

blood stem cells were isolated from these mice and transplanted into other mice, the cells engrafted again, still carrying the therapeutic gene changes.



The unedited red blood cells at left include many misshapen 'sickle' cells, shown by red arrows. These largely disappeared in the red blood cells made by gene-edited blood stem cells. Credit: Daniel Bauer/Boston Children's Hospital

Applied to blood stem cells from patients with beta-thalassemia, the same strategy restored the normal balance of the globin chains that make up hemoglobin.

The other study, published in *Blood*, used a similar gene editing protocol to target forms of beta-thalassemia that involve splicing mutations—errors in bits of DNA near the beta-globin gene that change

how the gene is read out to assemble beta-globin protein. In this study, nine patients with beta thalassemia donated their cells, which were manipulated in a dish. For some patients, the UMass team produced a different enzyme, Cas12a, to more effectively target their mutations. The CRISPR system efficiently made edits and restored normal splicing of the beta-globin protein in blood cells from each of the patients.

### **Setting the stage for a clinical trial**

The investigators are taking steps to take their BCL11A enhancer editing strategy to the clinic. They are developing a clinical-grade, scaled up protocol for cell product manufacturing, and performing safety studies necessary for regulatory approval from the FDA. They plan to seek funding from the National Heart, Lung and Blood Institute's Cure Sickle Cell initiative to launch a clinical trial in patients.

Dana-Farber/Boston Children's has already begun a clinical trial of gene therapy for [sickle cell disease](#). That approach increases fetal hemoglobin production by exposing patients' blood stem [cells](#) to a lentivirus carrying instructions to knock down the BCL11A gene in red-[blood](#)-cell precursors.

Bauer believes it's important to keep pursuing both approaches. "These conditions are very common inherited diseases and occur especially often in parts of the world where resources are quite limited," he says. "So we need a broad set of therapeutic options to make treatment available to as many patients as possible."

Yuxuan Wu and Jing Zeng of Dana-Farber/Boston Children's are co-first authors on the *Nature Medicine* paper; Bauer is corresponding author. Shuqian Xu of Dana Farber/Boston Children's is first author on the *Blood* paper; Bauer and Wolfe are co-corresponding authors.

The work was supported by the Translational Research Program at Boston Children's Hospital, the National Institutes of Health (NHLBI, NHGRI, NIAID, NIGMS, NIDDK), bluebird bio, the Harvard Stem Cell Institute, the St. Jude Children's Research Hospital Collaborative Research Consortium, the Burroughs Wellcome Fund, the American Society of Hematology and the Doris Duke Charitable, Charles H. Hood and Cooley's Anemia Foundations.

Boston Children's Hospital is an equity holder in bluebird bio, and several authors have applied for patents related to therapeutic gene editing.

Boston Children's Hospital may gain financial benefits if the technology being studied proves to be of benefit. As in all research studies, the Hospital has taken, and will continue to take, all necessary steps to ensure research subject safety, and the validity and integrity of the information obtained by this research.

**More information:** Highly efficient therapeutic gene editing of human hematopoietic stem cells, *Nature Medicine* (2019). [DOI: 10.1038/s41591-019-0401-y](https://doi.org/10.1038/s41591-019-0401-y) , [www.nature.com/articles/s41591-019-0401-y](https://www.nature.com/articles/s41591-019-0401-y)

Provided by Children's Hospital Boston

Citation: Researchers optimize gene editing for SCD and beta thalassemia (2019, March 28) retrieved 1 April 2023 from <https://medicalxpress.com/news/2019-03-optimize-gene-scd-beta-thalassemia.html>

|  |
|--|
| <p>This document is subject to copyright. Apart from any fair dealing for the purpose of private study or research, no part may be reproduced without the written permission. The content is provided for information purposes only.</p> |
|--|