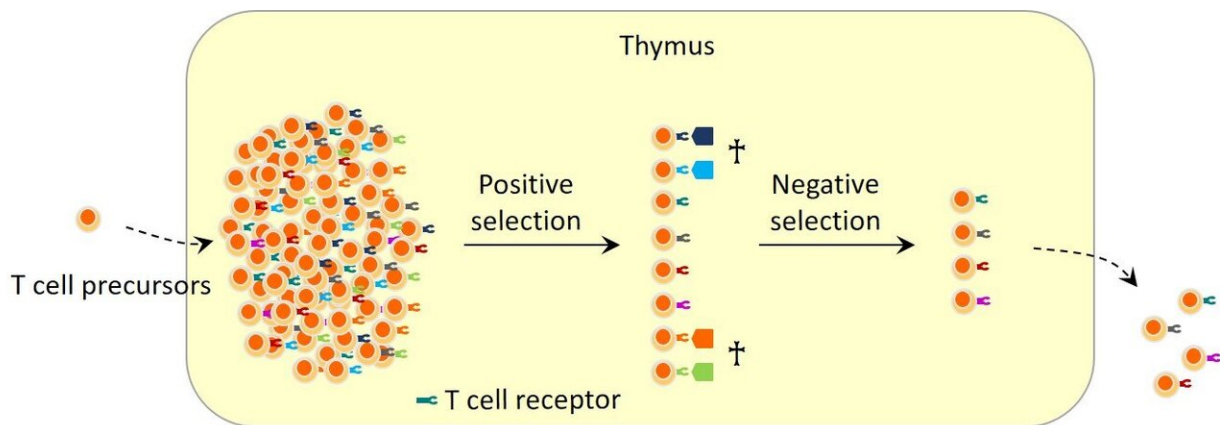


Identification of lymph node cells that may play important roles in immune tolerance

April 11 2019



Auto-reactive T cells that attack self-antigens are eliminated in the thymus. T cell precursors enter the thymus and generate a large number of TCR repertoire. Among TCR repertoire, there are some auto-reactive T cells. Auto-reactive T cells are negatively selected in the thymus, while self-tolerant T cells, after maturation completion, move to peripheral lymphoid organs such as lymph nodes and the spleen. Credit: Kanazawa University

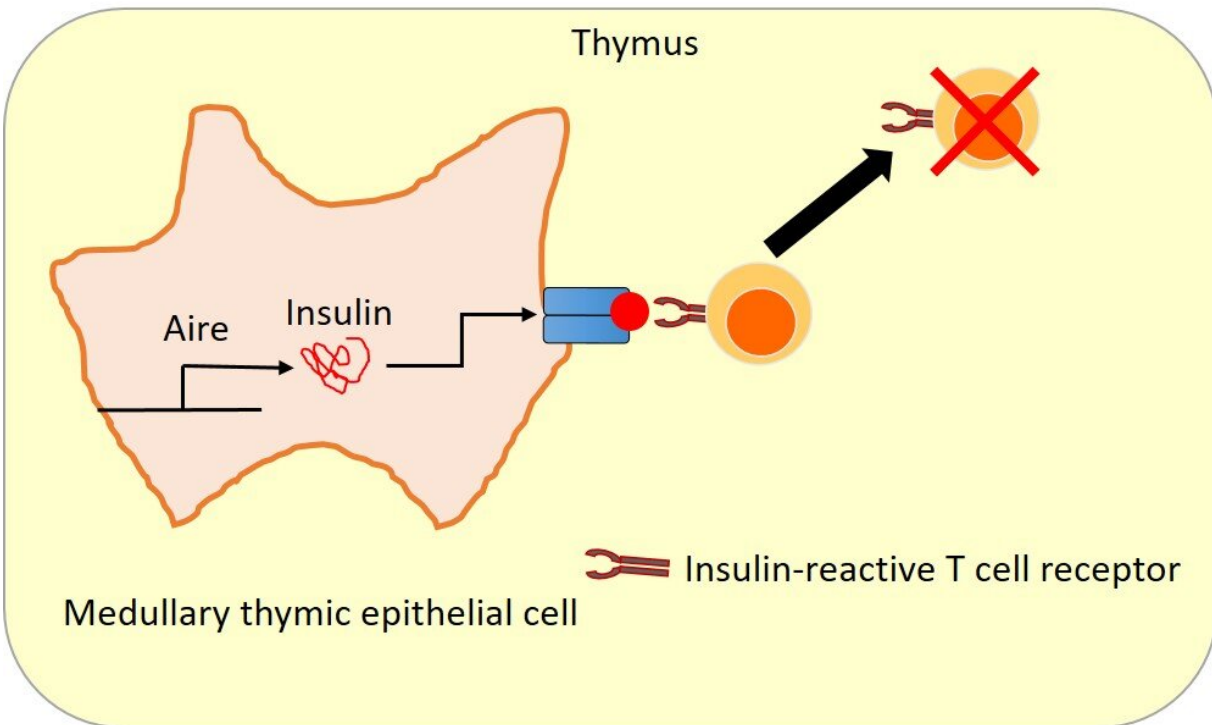
Aire expression in the thymus contributes to immune tolerance by eliminating auto-reactive T cells; insufficient elimination causes autoimmune disorders. The Aire gene was thought to be expressed only in the thymus, but recently, researchers reported Aire expression in peripheral lymph nodes. Researchers have now identified the cells expressing Aire in 0.01 percent of lymph node cells to be ILC3-like cells

using Aire-reporter mice and flow cytometry. The results may lead to elucidation of the causes of autoimmune disorders and treatments.

The thymus is the organ in which T cells differentiate. T cells express receptors that react with pathogenic microbes and viruses. However, the thymus generates auto-reactive T cells that react with self antigens, which must therefore be eliminated in the thymus. The mechanism for elimination of auto-reactive T cells is referred to as central tolerance.

Medullary thymic epithelial cells play key roles in central tolerance. These cells express organ-specific antigens (tissue-restricted antigens). For example, insulin is produced only by pancreatic β cells and C-reactive protein is produced only in the liver. The medullary thymic epithelial cells produce and present such proteins to T cells and eliminate those T cells that react with them, i.e. auto-reactive T cells (Figure 1).

Aire is a gene that regulates expression of tissue-restricted antigens in medullary thymic epithelial cells. Mutation of Aire causes decreased expression levels of tissue-restricted antigens in the thymus, and consequently, elimination of auto-reactive T cells becomes insufficient. This is thought to lead to autoimmune disease pathogenesis in multiple organs such as ACEPED. It was believed that Aire was expressed only in the thymus, but several research groups recently presented evidence that some cells in peripheral lymph nodes express Aire; peripheral lymph nodes are the organs in which immune reactions take place. However, there is disagreement between research groups on Aire-expressing cell types.



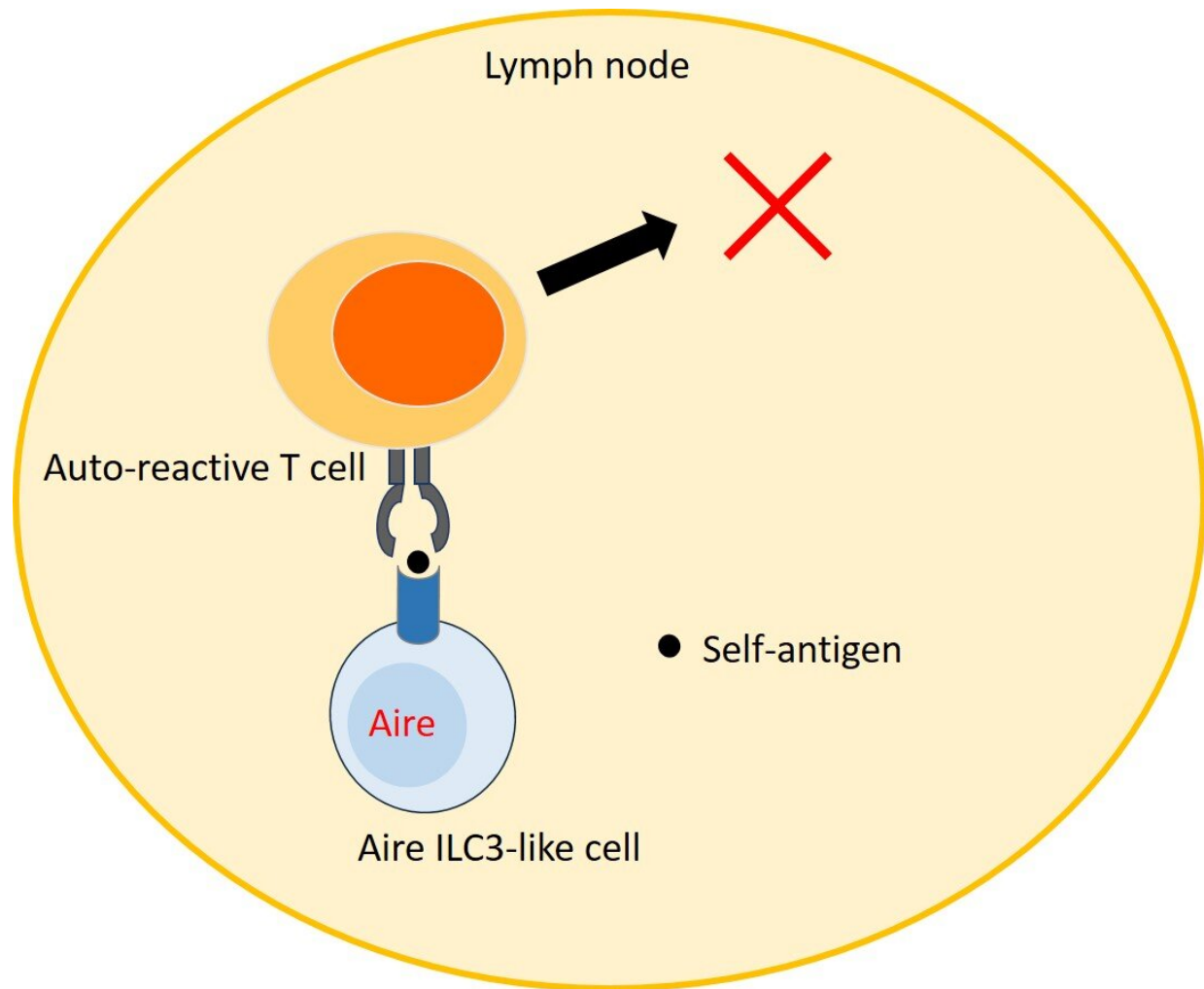
Aire induces the expression of tissue-restricted antigens in medullary thymic epithelial cells, contributing to elimination of auto-reactive T cells. Medullary thymic epithelial cells express antigens that express in specific organs such as insulin, C-reactive protein, etc. Thus, it is possible to eliminate auto-reactive T cells, for example, those reactive with insulin. Credit: Kanazawa University

A scientist from Kanazawa University played a central role in this immunological study as a member of an international collaborative research group, which has been engaged in studies on the mechanism of central tolerance induction in the thymus. During the course of their research, the group found Aire gene expression in lymph nodes; researchers previously believed the Aire gene was expressed only in the thymus. Thus, cells expressing the Aire gene in lymph nodes were analyzed in detail using two strains of Aire-reporter mice and high

sensitivity flow cytometry using Aire antibody. This confirmed that a very small number of cells, 0.01 percent of the population of all the cells in lymph nodes, did indeed express Aire.

These cells were found to express a high level of major histocompatibility complex (MHC) class II, which is expressed on antigen presenting cells. They also showed a high level of expression of costimulatory molecules necessary for T cells to be activated, which suggested Aire-expressing cells might play roles as antigen presenting cells. These Aire-expressing cells were analyzed in terms of cell morphology, cell surface molecules and gene expression profile, by which these cells were found to show characteristics similar to those of group 3 innate lymphoid cells (ILC3) that play important roles in maintaining homeostasis and the inflammation reaction of the gut. The present research group named these cells Aire ILC3-like cells. A previous study detected Aire mRNA in a cell fraction, which was confirmed in this study, but the cells in the fraction expressing Aire protein were Aire ILC3-like cells only.

Next, the gene expression profile of Aire ILC3-like cells was studied using wild-type mice and Aire knockout mice, which indicated that about 700 genes were regulated by Aire. In experiments using mice whose Aire-expressing cells were made to express hemagglutinin-antigen (HA antigen) of influenza virus, Aire ILC3-like cells were found to eliminate HA-reactive T cells in lymph nodes (Figure 3). These results indicate that Aire ILC3-like cells play a part of the role of immune tolerance in lymph nodes.



Aire ILC3-like cells eliminate auto-reactive T cells in lymph nodes. It is shown in this study that Aire ILC3-like cells eliminate auto-reactive T cells in lymph nodes by presenting self-antigens. Credit: Kanazawa University

Immune tolerance failure leads to autoimmune diseases. It is considered that peripheral T cell tolerance in lymph nodes consists of suppression by regulatory T cells, elimination of auto-reactive T cells and induction of anergy but it was unknown as to which types of cells were involved and in what manner in elimination of auto-reactive T cells and induction of anergy. Aire ILC3-like cells discovered in this study are thought to be

involved in the elimination of a proportion of auto-reactive T cells. In the near future, we hope to elucidate how immune tolerance is maintained by Aire ILC3-like cells and other [cells](#) inducing immune tolerance. This should lead to elucidation of the causes and possible treatments of connective tissue disease and autoimmune diseases.

More information: Tomoyoshi Yamano et al, Aire-expressing ILC3-like cells in the lymph node display potent APC features, *The Journal of Experimental Medicine* (2019). [DOI: 10.1084/jem.20181430](https://doi.org/10.1084/jem.20181430)

Provided by Kanazawa University

Citation: Identification of lymph node cells that may play important roles in immune tolerance (2019, April 11) retrieved 19 January 2023 from <https://medicalxpress.com/news/2019-04-identification-lymph-node-cells-important.html>

This document is subject to copyright. Apart from any fair dealing for the purpose of private study or research, no part may be reproduced without the written permission. The content is provided for information purposes only.