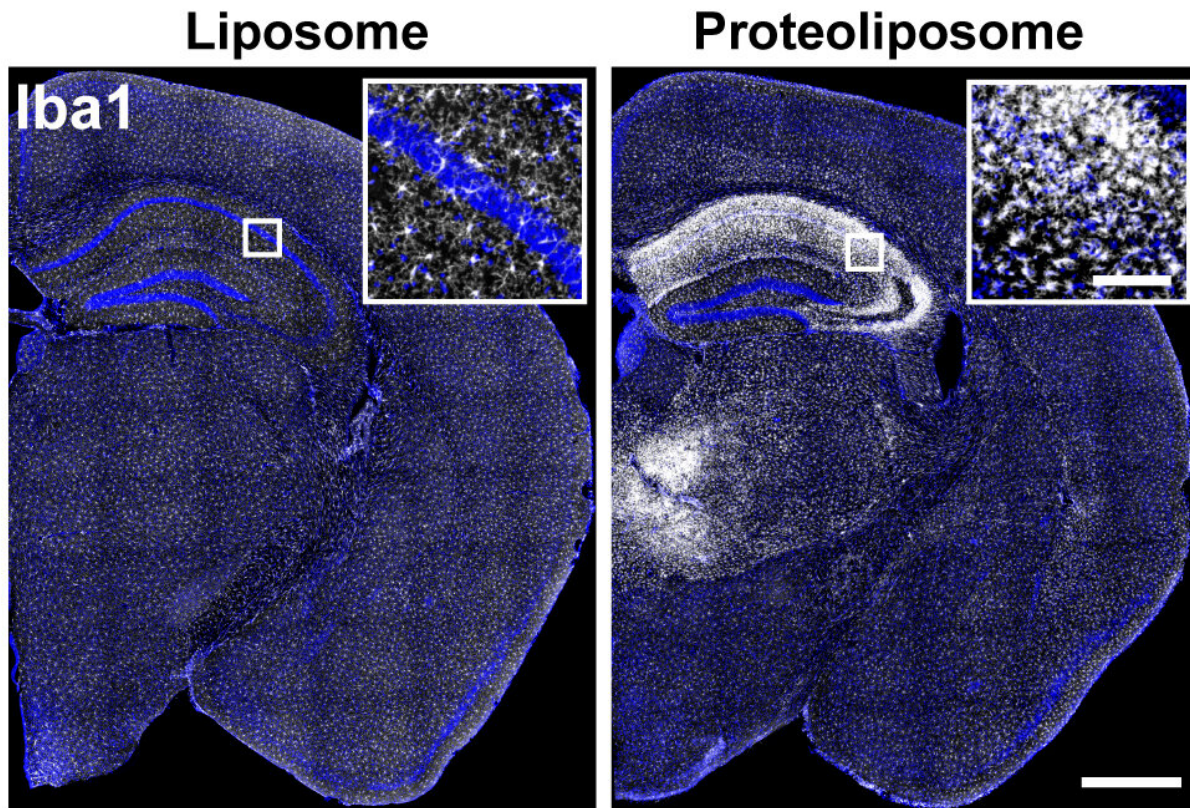


Puzzling brain disease could now be better diagnosed, treated

July 10 2019



Glial cells (white) in mice treated with proteoliposome (right) compared to control animals (left). Credit: B.E. Jones et al., *Science Translational Medicine* (2019)

Scientists have developed an animal model that may provide a path

toward improving the diagnosis and treatment of the devastating brain disease chronicled in the bestselling autobiography "Brain on Fire." The book, along with a 2017 movie by the same name, traces newspaper reporter Susannah Cahalan's harrowing descent into the throes of the disease.

The autoimmune disease is triggered by an attack on one of the key neurotransmitter [receptors](#) in the brain, the NMDA receptor. The disease is characterized by intellectual changes, severe memory loss, seizures, and even death. The study, published today in the journal *Science Translational Medicine*, reports an original animal model for this puzzling disease.

Scientists with the Vollum Institute at OHSU in Portland, Oregon, say the discovery clears the way for developing a near-atomic image of how the immune system attacks the NMDA receptor. With that information, researchers could specifically block the damaging autoimmune reaction and test new therapeutic strategies using their newly developed model for the disease in mice.

"The goal is a cure that is specific to this disease," said senior author Gary Westbrook, M.D., senior scientist in the Vollum Institute.

Brian Jones, a doctoral student in OHSU's neuroscience graduate program, and Westbrook collaborated with scientists in the lab of co-author Eric Gouaux, Ph.D. In 2014, Gouaux, also a senior scientist in the Vollum and investigator with the Howard Hughes Medical Institute, published an unprecedented three-dimensional view of the NMDA receptor in the journal *Nature*.

NMDA receptors are present in almost every neuron in the brain. Crucial for learning and memory, these receptors are required for the formation of new memories in the hippocampus of humans and animals,

and have been implicated in several neurological and psychiatric conditions including Alzheimer's disease, schizophrenia and depression.

The disease in people occurs unexpectedly when antibodies produced by the body's own immune system attack NMDA receptors in the brain.

"It's a [human disease](#) that we don't know enough about," Westbrook said.

Westbrook, also the Dixon professor of neurology in the OHSU School of Medicine, said the animal model will be especially useful in determining the distinct site or sites on the NMDA receptor that trigger disease.

"If we know the exact site, one could potentially intervene early to abort the progression of the disease," Westbrook said.

Westbrook's collaboration with Gouaux's team started three years ago when they developed a strategy to model the disease by active immunization of mice with the fully formed NMDA receptor. Almost 90% of mice developed signs that mimicked the human disease.

According to the research team, the development of an animal model is important because there are few samples of [brain](#) tissue from people who have developed the disease. The [animal model](#) provides a unique opportunity to recognize early signs of the [disease](#), and to develop therapeutic approaches that could precisely target the site on the receptor, known as an epitope, that is attacked by the immune system.

More information: B.E. Jones et al., "Autoimmune receptor encephalitis in mice induced by active immunization with conformationally stabilized holoreceptors," *Science Translational Medicine* (2019). stm.sciencemag.org/lookup/doi/10.1126/scitranslmed.aaw0044

Provided by Oregon Health & Science University

Citation: Puzzling brain disease could now be better diagnosed, treated (2019, July 10) retrieved 17 May 2023 from <https://medicalxpress.com/news/2019-07-puzzling-brain-disease.html>

This document is subject to copyright. Apart from any fair dealing for the purpose of private study or research, no part may be reproduced without the written permission. The content is provided for information purposes only.