

Pancreatic cancer clue

August 19 2019, by Niyati Vachharajani

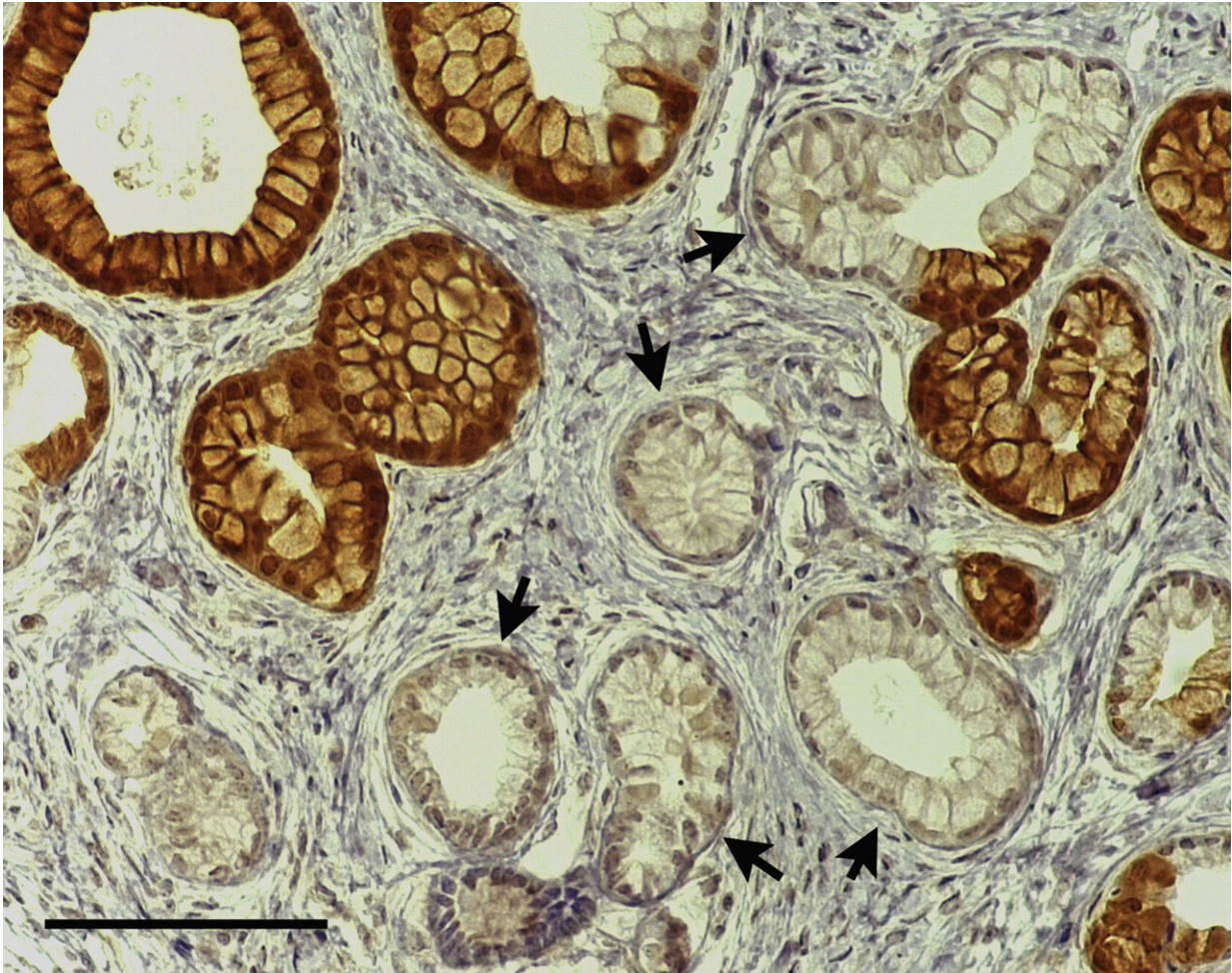


Figure 1 $Kras$ mutant phenotype occurs in EYFP+ and in EYFP- cells in $Ptf1a^{CreERTM} LSL-Kras^{G12D} R26R^{EYFP}$ mice, reflecting broader recombination of the $LSL-Kras^{G12D}$ allele than of the $R26R^{EYFP}$ allele. Note the PanIN-like lesions with tall columnar morphology and basal nuclei, some of which are positive for EYFP (brown) and some of which are negative (arrows). DOI:

<https://doi.org/10.1016/j.jcmgh.2019.07.001>

Chronic pancreatitis (CP) is a predisposing condition for pancreatic ductal adenocarcinoma (PDAC), the most common and deadly cancer of the pancreas. However, the link between CP and PDAC is not known.

To explore this connection, Anna Means, Ph.D., and colleagues used a mouse model in which a pancreatic duct obstruction was induced in conjunction with an activating mutation in the KRAS oncogene, as is commonly seen in human disease.

Reporting in the journal *Cellular and Molecular Gastroenterology and Hepatology*, the researchers found that CP promoted KRAS-initiated cancer in the ductal cells of the pancreas but not in the acinar cells which synthesize, store and secrete digestive pro-enzymes.

While [acinar cells](#) upregulate the tumor suppressor gene p53 and its target gene p21, thereby resisting neoplastic changes, ductal cells lack a p53/p21 response and become proliferative after obstructive CP, thereby contributing to PDAC progression.

These findings uncover a mechanism by which inflammation and intrinsic cellular programming synergize for the development of PDAC.

More information: Chanjuan Shi et al. Differential Cell Susceptibilities to Kras in the Setting of Obstructive Chronic Pancreatitis, *Cellular and Molecular Gastroenterology and Hepatology* (2019). [DOI: 10.1016/j.jcmgh.2019.07.001](https://doi.org/10.1016/j.jcmgh.2019.07.001)

Provided by Vanderbilt University

Citation: Pancreatic cancer clue (2019, August 19) retrieved 15 February 2024 from <https://medicalxpress.com/news/2019-08-pancreatic-cancer-clue.html>

This document is subject to copyright. Apart from any fair dealing for the purpose of private study or research, no part may be reproduced without the written permission. The content is provided for information purposes only.