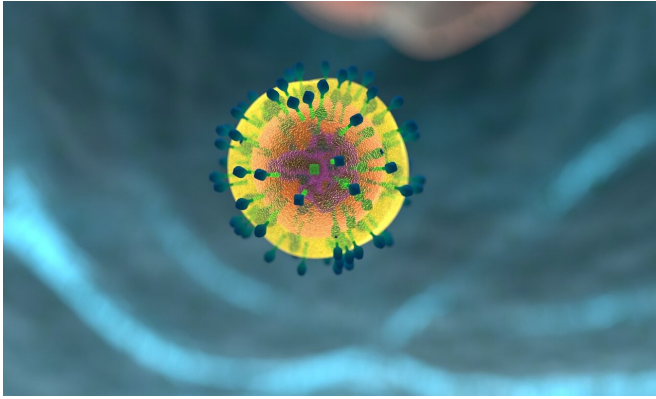


Advanced imaging tips T cell target recognition on its head

19 December 2019



Credit: CC0 Public Domain

T cells represent a key component of our immune system, and play a critical role in protecting us against harmful pathogens like viruses and bacteria, and cancers. The more we understand about how they recognise, interact with and even kill infected or cancer cells moves us closer to developing therapies and treatments for a range of conditions.

In a paper published today in the premier international journal *Science*, an Australian team of scientists led by Monash University, the Australian Research Council Centre of Excellence in Advanced Molecular Imaging and the Doherty Institute at the University of Melbourne, has redefined what we thought we knew about T cell recognition for the past 20 years.

In order to interact with other [cells](#) in the body, T cells rely on specialised receptors known as T Cell Receptors that recognise virus or bacteria fragments that are bound to specialised molecules called major histocompatibility complex (MHC) or MHC-like. Over the past 20 years, the prevailing view was that T Cell Receptors sat atop the MHC and MHC-like molecules for recognition.

The team of scientists characterised a new population within a poorly understood class of T cells called gamma delta T Cells that can recognise an MHC-like molecule known as MR1. Using a high intensity X-ray beam at the Australian Synchrotron, the scientists obtained a detailed 3-D image of the interplay between the gamma delta T cell receptor and MR1 revealing an intriguing result whereby the gamma delta T cell receptor bound underneath the MHC-like molecule for recognition. This highly unusual recognition mechanism reshapes our understanding of how TCR can interact with their target molecules, and represents a major development in the field of T cell biology.

"Think of it like a flag attached to a cell. We always thought the T cells were coming along and reading that flag by sitting atop it. We have determined that instead, some T cells can approach and interact with it from underneath," said Dr. Jérôme Le Nours from Monash Biomedicine Discovery Institute, co-lead author on the paper.

"These are the types of fine and important details that can change how we approach future research avenues in T cell biology," said Dr. Le Nours.

"This is important because T cells are a critical weapon in our [immune system](#), and understanding how they target and interact with cells is crucial to harnessing their power in therapies such as infection and cancer immunotherapy."

"Our study shows that MR1 is a new type of molecular target for gamma delta T cells. These cells play a decisive role in immunity to infection and cancer, yet what they respond to is poorly understood. MR1 may be signalling to gamma delta T cells that there is a virus, or cancer cell and triggering these cells to initiate a protective immune response" said University of Melbourne Dr. Nicholas Gherardin from the Doherty Institute, co-lead author on the paper.

"We're very excited to follow up these findings in studies that will aim to harness this new biology in disease settings."

More information: "A class of ?? T cell receptors recognize the underside of the antigen-presenting molecule MR1" *Science* (2019).

[science.sciencemag.org/cgi/doi/...
1126/science.aav3900](https://science.sciencemag.org/cgi/doi/10.1126/science.aav3900)

Provided by University of Melbourne

APA citation: Advanced imaging tips T cell target recognition on its head (2019, December 19) retrieved 30 May 2022 from <https://medicalxpress.com/news/2019-12-advanced-imaging-cell-recognition.html>

This document is subject to copyright. Apart from any fair dealing for the purpose of private study or research, no part may be reproduced without the written permission. The content is provided for information purposes only.