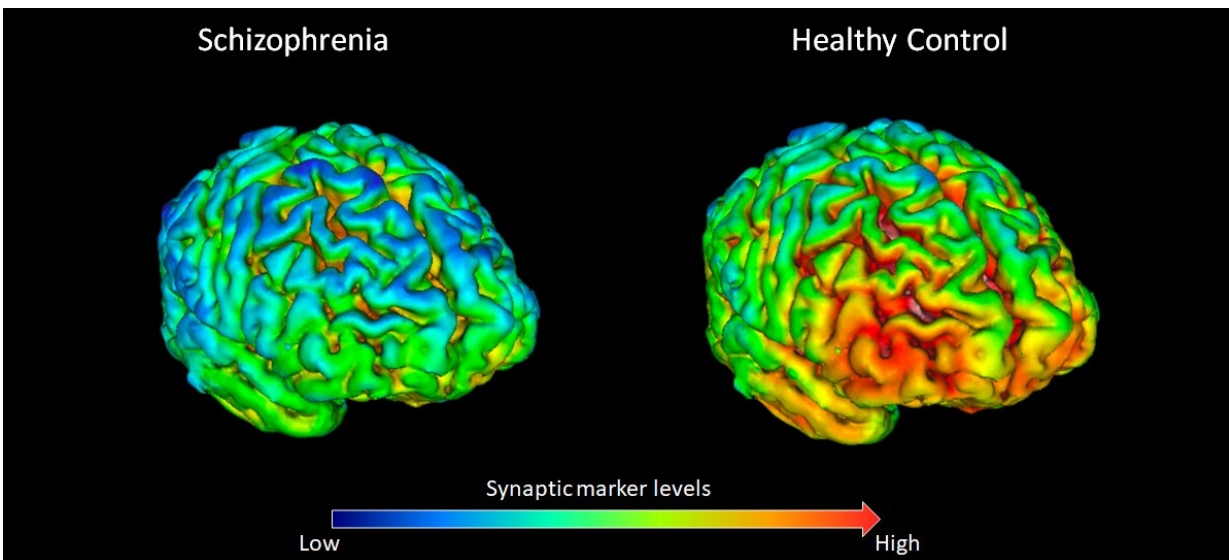


New study finds evidence for reduced brain connections in schizophrenia

January 14 2020



PET brain scans showing that 18 healthy volunteers (right) have on average higher levels (shown by yellow-red) of synapse marker protein SV2A than 18 participants with schizophrenia (left). Credit: E. Onwordi at MRC London Institute of Medical Sciences (LMS)

Advances in scanning have allowed researchers for the first time to show lower levels of a protein found in the connections between neurons in the living brains of people with schizophrenia.

The researchers, who conducted the scans at the psychiatric imaging facility at the Medical Research Council (MRC) London Institute of

Medical Sciences, say these changes could underlie the cognitive difficulties seen in schizophrenia and provide targets for research into new treatments.

It was first hypothesised in the early 1980s that schizophrenia was caused by dysfunctional synapses—where the nerve signals are transmitted between neurons in the brain. However, researchers had only been able to study this indirectly, such as in post mortem brains samples, or animal and cell models in the lab.

In this study, published in *Nature Communications*, the researchers detected this in living brains for the first time by utilising a tracer that emits a signal which can be picked up by a PET brain scan. After being injected, the tracer binds specifically to a protein found in synapses called SV2A (synaptic vesicle glycoprotein 2A), which has been shown in animal and post-mortem studies to be a good marker of the density of synaptic nerve endings in the brain.

They scanned 18 adults with schizophrenia and compared them to 18 people without schizophrenia.

They found that levels of the synaptic protein SV2A were lower in the front parts of the brain—regions of the brain involved in planning—in people with schizophrenia.

Professor Oliver Howes, who led the study, from the MRC London Institute of Medical Sciences, Imperial College London and King's College London, said: "Our current treatments for schizophrenia only target one aspect of the disease—the [psychotic symptoms](#)—but the debilitating cognitive symptoms, such as loss of abilities to plan and remember, often cause much more long-term disability and there's no treatment for them at the moment. Synaptic loss is thought to underlie these symptoms.

"Our lab at the MRC London Institute of Medical Sciences is one of the few places in the world with this new tracer, which means we've been able for the first time to show there are lower levels of a synaptic protein in people with schizophrenia. This suggests that loss of synapses could underlie the development of schizophrenia.

"We need to develop new treatments for schizophrenia. This protein SV2A could be a target for new treatments to restore synaptic function."

Dr. Ellis Onwordi, who conducted the research, from the MRC London Institute of Medical Sciences, Imperial College London and King's College London, said: "Schizophrenia is a highly debilitating disorder, and the therapeutic options are too limited for many patients. To develop better treatments in the future we need studies like this to shine a light on how the extraordinarily complex wiring of the human brain is altered by this disease."

"Having scans that can characterise the distribution of the approximately 100 trillion synapses in the living brain, and find differences in their distribution between people with and without schizophrenia, represents a significant advance in our ability to study schizophrenia."

The people with [schizophrenia](#) who were scanned had all received [antipsychotic medication](#), so the researchers wanted to exclude this as a factor in the synaptic dysfunction. They gave [antipsychotic drugs](#), haloperidol and olanzapine, to rats for 28 days and found it had no effect on the levels of the protein SV2A.

Professor Howes said: "This is reassuring as it's suggesting that our antipsychotic treatments aren't leading to loss of [brain](#) connections.

"Next we hope to scan younger people in the very early stages to see how [synaptic](#) levels change during the development of the illness and whether

these changes are established early on or develop over time."

More information: 'Synaptic marker protein SV2A is reduced in schizophrenia and unaffected by antipsychotics in rats' E. Onwordi et al. *Nature Communications*. [DOI: 10.1038/s41467-019-14122-0](https://doi.org/10.1038/s41467-019-14122-0)

Provided by UK Research and Innovation

Citation: New study finds evidence for reduced brain connections in schizophrenia (2020, January 14) retrieved 4 February 2024 from <https://medicalxpress.com/news/2020-01-evidence-brain-schizophrenia.html>

This document is subject to copyright. Apart from any fair dealing for the purpose of private study or research, no part may be reproduced without the written permission. The content is provided for information purposes only.