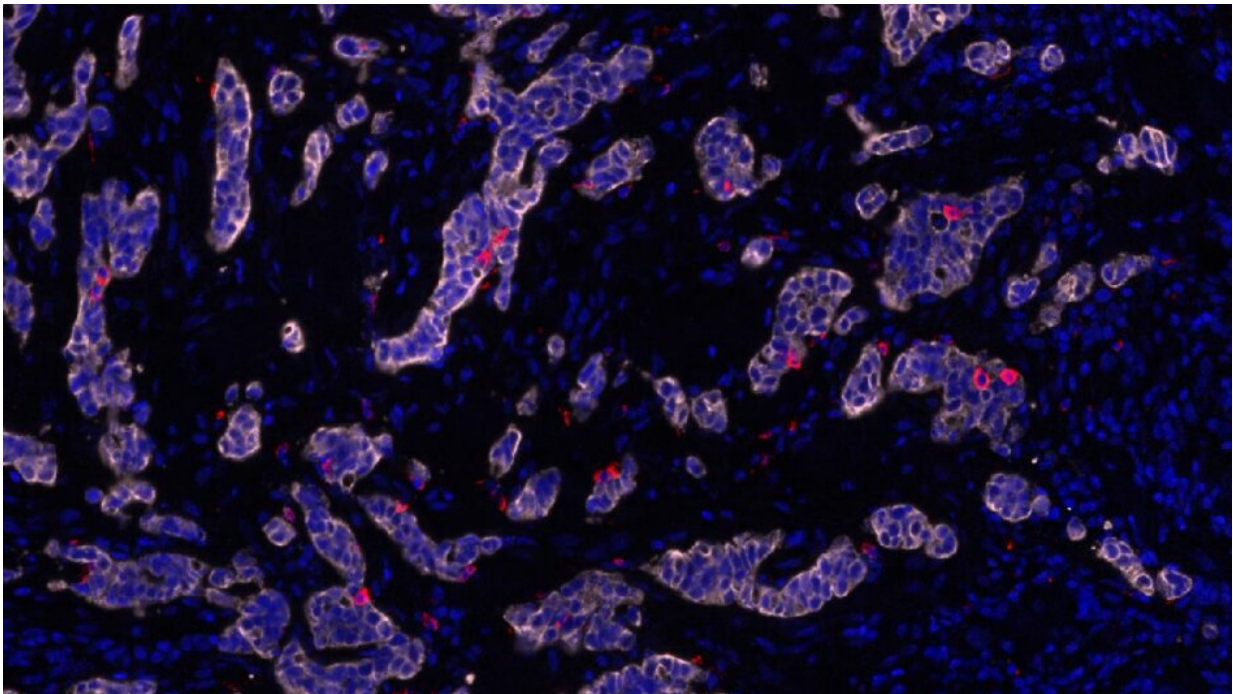


# Cancers engaged in evolutionary arms race with immune system

January 16 2020

---



Multiplex immunohistochemistry image of T-cells infiltrating stomach tumours.  
Credit: Katharina von Loga, Biomedical Research Centre

Aggressive, highly mutated cancers evolve escape routes in response to immune attacks in an "evolutionary arms race" between cancer and the immune system, a new study reports.

Gullet and stomach cancers with faults in their systems for repairing

DNA build up huge numbers of genetic mutations which make them resistant to treatments such as chemotherapy.

But their high number of mutations means they look "foreign" to the immune system and leaves them vulnerable to immune attack—as well as susceptible to new immunotherapies.

Scientists at The Institute of Cancer Research, London, found that these "hyper-mutant" tumors rapidly evolve strategies to disguise their foreignness from the immune system and evade attack.

## **Important role of Darwinian evolution in cancer**

The findings underline the important role of Darwinian evolution in [cancer](#), and in how tumors respond to the immune system—and in future, they could help optimize treatment with immunotherapy, and other drugs such as chemotherapy.

The study is published in *Nature Communications* today (Thursday), and was funded by Cancer Research UK and the Schottlander Research Charitable Trust. It is part of a program of work at The Institute of Cancer Research (ICR) to understand how cancers adapt and evolve in response to changes in their environment, such as by evading the immune system or becoming resistant to treatment.

The ICR is the first organisation in the world to design a drug discovery program specifically to meet the major challenge of cancer evolution and drug resistance—to be housed within its new £75 million Centre for Cancer Drug Discovery.

## **Strikingly high levels of genetic variation**

In the new study, the researchers analyzed in minute detail the genetic landscape of four tumors from the stomach and gullet which had a fault in one or more important DNA repair genes—making them "hyper-mutated."

The researchers analyzed the genetic make-up of seven different areas from each patient's tumor, and in sites to which their cancer had spread.

They found that the hyper-mutant stomach tumors had strikingly high levels of genetic variation, with an average of nearly 2,000 different gene faults—much higher than the 436 faults found in skin cancer, the next most highly mutated cancer type analyzed in the study.

Different areas of the same tumor showed extreme variation in their mutations—much more than in other tumor types analyzed in the new study—enabling rapid Darwinian evolution.

## **Mutations to evade immune attack**

Importantly, the two stomach and gullet tumors with the highest level of infiltration from [immune cells](#) had each developed several mutations that allowed them to evade immune attack.

These mutations occurred in genes called B2M, HLA and JAK1/2, which normally help immune cells to recognize and attack cancer cells. When the genes fail to function as normal, the immune system is unable to spot cancer cells despite their large numbers of mutations.

The researchers believe that highly mutated cancers come under particularly strong selective pressure from the immune system—and can draw on huge genetic variation to evolve more rapidly than other cancers, making them particularly hard to treat.

But hyper-mutated stomach and gullet tumors are highly sensitive to novel immunotherapies—showing that the immune system can effectively fight even the most rapidly evolving tumors.

The new findings add to evidence that there is an evolutionary consequence to high mutation rates in sparking an arms race with the immune system—and that this helps explain why these cancers are unusually sensitive to immunotherapy.

## **Staying one step ahead of cancer evolution**

These results will help the team to investigate further the effect of cancer evolution on immune response in data from a new clinical trial looking at the possible benefit of immunotherapy in similarly hyper-mutant bowel tumors.

In future, the researchers hope their findings could also help combat resistance to chemotherapies—by using similar strategies to the immune system, and staying one step ahead of cancer evolution.

The ICR now has less than £10 million left to raise to finish the Centre for Cancer Drug Discovery and equip it with the state-of-the-art facilities needed for its ambitious Darwinian drug discovery program.

Dr. Marco Gerlinger, Team Leader in Translational Oncogenomics at The Institute of Cancer Research, London, said:

"Our new study has shown that in highly mutated tumors, cancer and the immune system are engaged in an evolutionary arms race in which they continually find new ways to outflank one another.

"Watching hyper-mutated tumors and immune cells co-evolve in such detail has shown that the immune system can keep up with changes in

cancer, where current cancer therapies can become resistant—and that we could use immunotherapies to shift the balance of this arms race, extending patients' lives.

"Next, we plan to study the evolutionary link between hyper-mutant tumors and the immune system as part of a new clinical trial looking at the possible benefit of immunotherapy in bowel cancer."

### **"We can tip the evolutionary balance in our favor"**

Professor Paul Workman, Chief Executive of The Institute of Cancer Research, London, said:

"Cancer evolution is the biggest challenge in cancer research and treatment today—and deepening our understanding of how tumors evolve in response to treatment is absolutely key to finding ways of overcoming drug resistance.

"This fascinating new study shows how cancers can co-evolve with the immune system, with each responding to changes in the other. Without treatment, cancers will be destined to win this evolutionary arms race, but we can tip the balance in favor of the immune system through carefully designed use of immunotherapy.

"I am keen to see our researchers harness their new insights into cancer evolution to help predict cancer's response to immunotherapy and ultimately to enhance the way we use immunotherapies to maximize their impact."

Professor Charles Swanton, Cancer Research UK's chief clinician, said:

"This study emphasizes the importance of understanding how cancers evolve, and highlights likely selection pressures imposed by a patient's

[immune system](#) and the developing tumor.

"The challenge in improving outcomes for people with cancer, is to fully understand cancer's evolutionary rulebook. This will mean studying many more samples from patients with different cancers, as so far these researchers have analyzed samples from four patients with a relatively uncommon form of cancer.

There's still a long way to go, but we hope that as the rules of cancer evolution are uncovered, we can discover new ways to treat and care for patients with the disease."

**More information:** Katharina von Loga et al. Extreme intratumour heterogeneity and driver evolution in mismatch repair deficient gastro-oesophageal cancer, *Nature Communications* (2020). [DOI: 10.1038/s41467-019-13915-7](#)

Provided by Institute of Cancer Research

Citation: Cancers engaged in evolutionary arms race with immune system (2020, January 16) retrieved 13 February 2024 from <https://medicalxpress.com/news/2020-01-cancers-engaged-evolutionary-arms-immune.html>

<p>This document is subject to copyright. Apart from any fair dealing for the purpose of private study or research, no part may be reproduced without the written permission. The content is provided for information purposes only.</p>
--