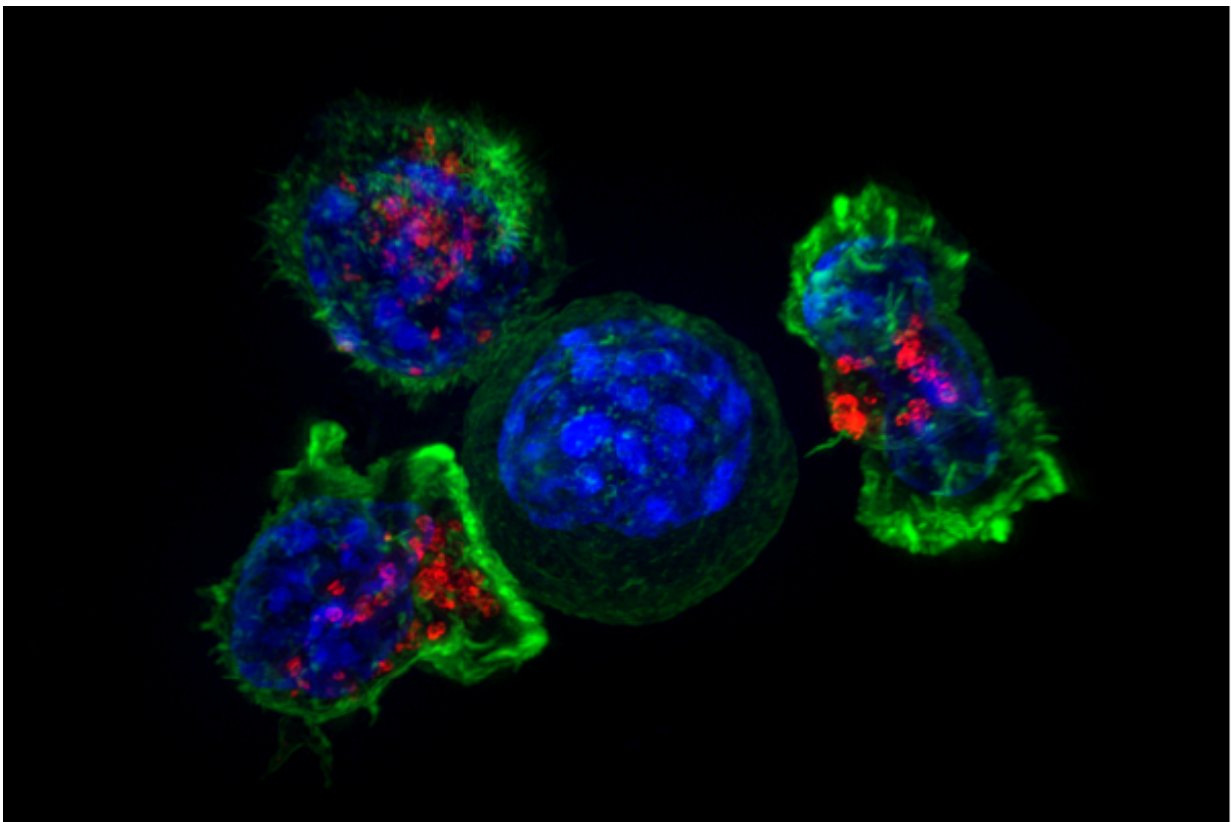


Study shows cancers with high levels of the SLC7A11 gene may respond to glucose transporter inhibitor treatment

March 30 2020



Killer T cells surround a cancer cell. Credit: NIH

New findings from researchers at The University of Texas MD Anderson Cancer Center about how some cancer cells become

"addicted" to glucose could open up fresh approaches to therapy strategies for cancers with high levels of an amino acid transporter called solute carrier family 7 member 11 (SLC7A11). This includes lung cancer and renal cell carcinoma, the most common type of kidney cancer.

The study, led by Boyi Gan, Ph.D., of the Department of Experimental Radiation Oncology, explored metabolic reprogramming, cancer, and published findings in the March 30 online issue of *Nature Cell Biology*.

"Metabolic reprogramming often renders [cancer cells](#) highly dependent on specific nutrients for survival," said Gan. "Limiting the supply of such nutrients or blocking their uptake or metabolism through pharmacological means may selectively kill 'addicted' cancer [cells](#) without affecting [normal cells](#). Our understanding of nutrient dependency in cancer cells can provide great insights for targeting metabolic vulnerabilities in cancer therapies."

The chemistry behind cancer cell "addictions"

Gan noted the example of asparaginase treatment for [acute lymphoblastic leukemia](#), which, unlike normal cells, lacks the ability to produce the amino acid asparagine, and must depend on extracellular sources to obtain asparagine in order to survive. The treatment disrupts asparagine supply and ensures the cancer cells cannot gain access to this vital amino acid, resulting in cancer cell death.

Cancer cells depend on another amino acid known as cystine to ensure strong antioxidant defenses. Most cancer cells obtain cystine via the SLC7A11 transporter. Once inside cells, cystine is converted to a related amino acid called cysteine, which is then used to build up glutathione, the most common antioxidant produced in the body, which in turn, allows cancer cells to survive.

"SLC7A11 is frequently overexpressed in cancers and has a well-established role in maintaining glutathione levels which reduce cancer cell death," said Gan. "However, in this study we found that actively importing cystine into cells represents a risky business for cancer cells. Cystine is among the least soluble [amino acids](#) and accumulating too much cystine inside cells is toxic. Therefore, cancer cells are forced to quickly convert cystine to cysteine. Consequently, cancer cells with high levels of SLC7A11 and high demand for cystine become dependent on glucose for survival."

These findings revealed a metabolic vulnerability associated with high SLC7A11 expression in cancer cells, which suggests corresponding therapeutic strategies. The research team showed that therapies known as glucose transporter (GLUT) inhibitors cut off glucose supply, leading to toxic buildup of cystine inside cells. This selectively kills SLC7A11-high cancer cells and suppresses SLC7A11-high tumor growth. This study therefore suggests using GLUT inhibitors to treat tumors with high expression of this key amino acid transporter.

More information: Cystine transporter regulation of pentose phosphate pathway dependency and disulfide stress exposes a targetable metabolic vulnerability in cancer, *Nature Cell Biology* (2020). [DOI: 10.1038/s41556-020-0496-x](https://doi.org/10.1038/s41556-020-0496-x) , nature.com/articles/s41556-020-0496-x

Provided by University of Texas M. D. Anderson Cancer Center

Citation: Study shows cancers with high levels of the SLC7A11 gene may respond to glucose transporter inhibitor treatment (2020, March 30) retrieved 11 April 2023 from <https://medicalxpress.com/news/2020-03-cancers-high-slc7a11-gene-glucose.html>

This document is subject to copyright. Apart from any fair dealing for the purpose of private

study or research, no part may be reproduced without the written permission. The content is provided for information purposes only.