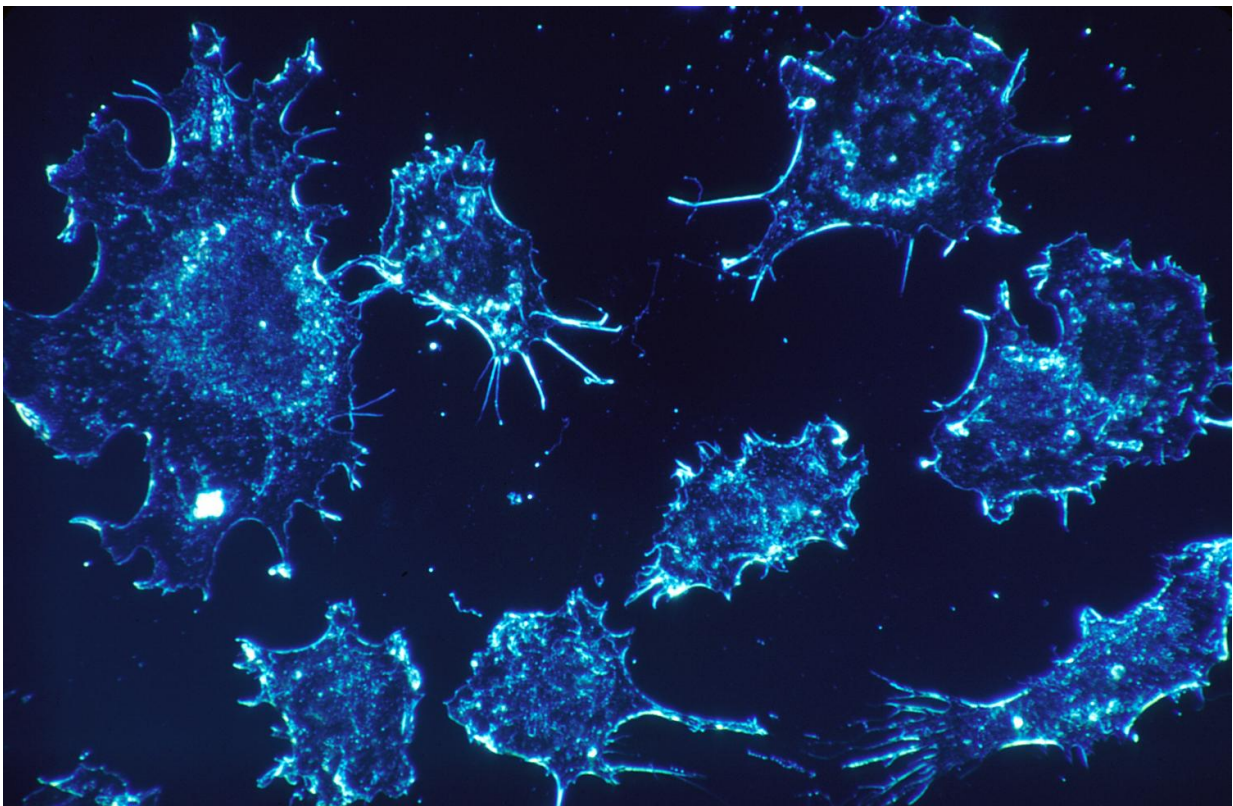


# Immune system changes occur early in development of multiple myeloma, study finds

April 27 2020

---



Credit: CC0 Public Domain

Long before multiple myeloma becomes a malignant disease, the collection of immune system cells and signal carriers amid the tumor

cells undergoes dramatic shifts, with alterations in both the number and type of immune cells, researchers at Dana-Farber Cancer Institute, the Broad Institute of MIT and Harvard, and Massachusetts General Hospital (MGH) report in a new study.

The findings, published online today by the journal *Nature Cancer*, are a step toward more personalized treatment of multiple [myeloma](#). Future treatments may be geared to the immune microenvironment of each patient's disease—the specific constellation of immune [cells](#) in and around myeloma tissue—the study authors say.

"Our results provide a comprehensive map of the immune changes that take place in pre-malignant myeloma," said Irene Ghobrial, MD, of Dana-Farber, the Broad Institute, the co-senior author of the study with Gad Getz, Ph.D., of the Broad Institute and MGH. "The discovery that the immune microenvironment is abnormal even at very early stages of the disease may suggest strategies for targeting myeloma before it becomes malignant."

Multiple myeloma is a cancer of white blood cells known as plasma cells in the bone marrow. It is preceded by precursor conditions known as monoclonal gammopathy of unknown significance (MGUS) and smoldering multiple myeloma (SMM), in which people have abnormal plasma cells in their bone marrow but no physical symptoms or organ problems. Because not everyone with MGUS or SMM develops outright myeloma, treatment doesn't begin until symptoms of myeloma—such as bone pain, low blood counts, kidney problems, and nerve damage—appear. Researchers are working on ways to intercede in the disease process early on to identify individuals at risk and prevent the development of full-blown myeloma.

The new study represents the first time that single-cell RNA sequencing—in which scientists pluck individual cells from tissue and

scan their RNA to determine which genes are active—has been used to identify features of the immune microenvironment in myeloma precursor conditions.

"We wanted to understand the changes that occur in the microenvironment as the disease progresses from MGUS to SMM to overt myeloma, as compared to the bone marrow of healthy tissue donors," said co-first author Oksana Zavidij, Ph.D., of Dana-Farber and the Broad Institute. "The approach could ultimately shed light on why some patients progress to myeloma while others don't and help us better target treatments to individual patients."

The analysis revealed major immune changes early in the course of myeloma development:

- An increase in the number of natural killer (NK) cells—white blood cells that spring to attack foreign invaders and diseased cells—during MGUS. In patients with the highest volume of NK cells, the cells tended to be a type that is drawn into the [bone marrow](#) in response to signaling molecules.
- The loss, in SMM, of memory T cells—white blood cells that respond to previously encountered bacteria, viruses, and one's own abnormal cells. (The finding suggests that treatments that replenish or activate these cells could be effective in some patients.)
- A dysregulation of certain monocytes—large white blood cells that take on intruders. These monocytes normally display foreign or tumor proteins to T cells, which use that information to attack infected or cancerous cells. In myeloma precursor conditions, however, myeloma cells prevent these proteins from being presented, resulting in a tamped-down immune attack on the cancer.

"These changes didn't correspond to any particular precursor condition," said co-first author Nicholas Haradhvala, of the Broad Institute, MGH, and the Harvard Graduate Program in Biophysics. "They were found in different combinations in patients with MGUS and SMM, suggesting an axis upon which patients could be stratified for evaluation of individual-specific risk of progression and potential for early intervention."

"Our findings have described the landscape of dysregulated immune system that can be used to follow up in much larger studies and build robust associations with patient risk and progression," added Getz.

**More information:** Single-cell RNA sequencing reveals compromised immune microenvironment in precursor stages of multiple myeloma, *Nature Cancer* (2020). DOI: [10.1038/s43018-020-0053-3](https://doi.org/10.1038/s43018-020-0053-3) , [www.nature.com/articles/s43018-020-0053-3](https://www.nature.com/articles/s43018-020-0053-3)

Provided by Dana-Farber Cancer Institute

Citation: Immune system changes occur early in development of multiple myeloma, study finds (2020, April 27) retrieved 19 November 2023 from <https://medicalxpress.com/news/2020-04-immune-early-multiple-myeloma.html>

<p>This document is subject to copyright. Apart from any fair dealing for the purpose of private study or research, no part may be reproduced without the written permission. The content is provided for information purposes only.</p>
--