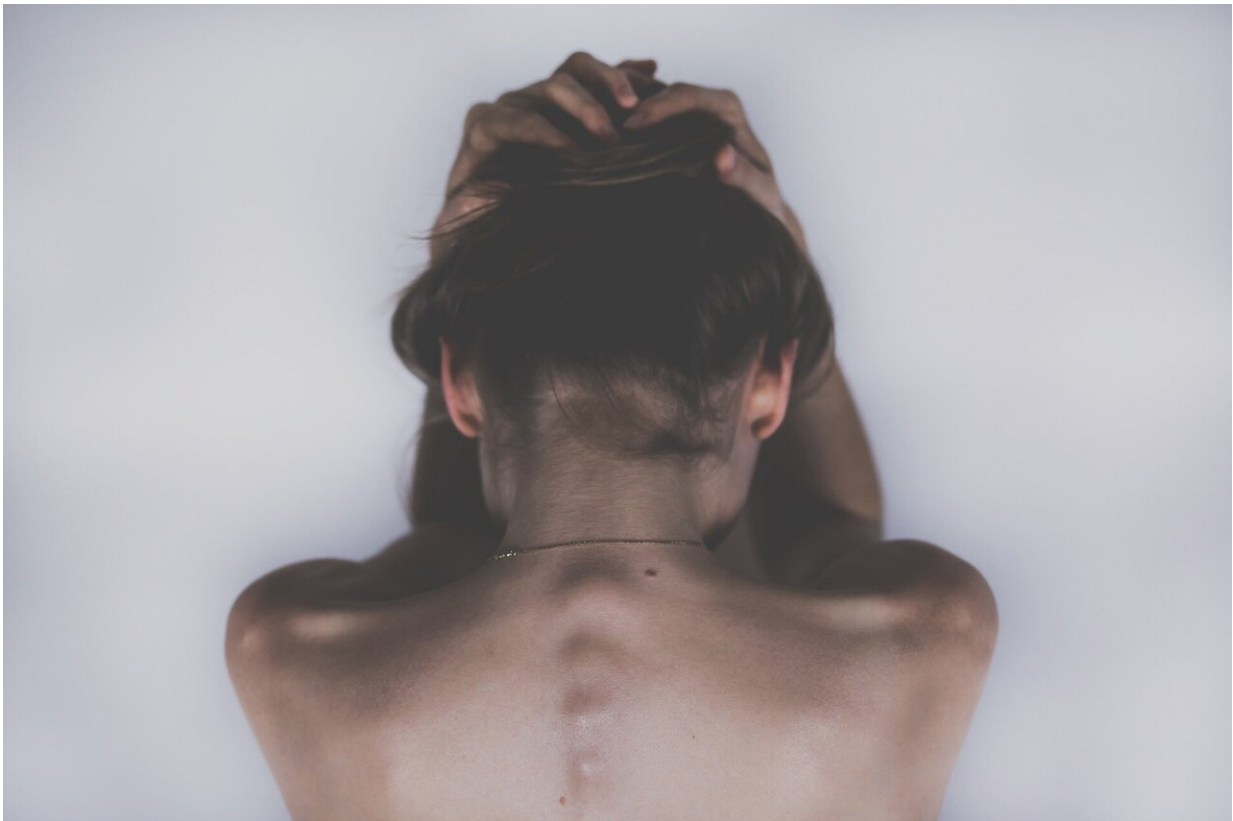


How lockdown impacts those with bone, joint and muscle pain

April 29 2020



Credit: CC0 Public Domain

University of East Anglia researchers are launching a new study to see how COVID-19 and lockdown are affecting people with bone, joint and muscle pain.

Their previous research has revealed the challenges and poor health outcomes caused by [social isolation](#) and loneliness for people with conditions like osteoarthritis, [rheumatoid arthritis](#), [lower back pain](#), osteoporosis and fibromyalgia.

Now, the team are looking for people with bone, joint and [muscle pain](#) to take part in a 12-week [online survey](#) to see how they are coping at this difficult time of coronavirus self-isolation.

The study is being led by Dr. Toby Smith, from UEA's School of Health Sciences, and Prof Alex MacGregor, from UEA's Norwich Medical School.

Dr. Smith said: "Bone, joint and muscle pain is a major cause of disability for people across the UK. People with these problems often experience pain, joint stiffness, fatigue and muscle weaknesses.

"Bone, joint and muscle diseases are frequently managed with a combination of physical activity and medications.

"The coronavirus pandemic is a major challenge to people's health and wellbeing, both to young and older people.

"With the current period of self-isolation because of coronavirus, we are worried that this may become a much greater problem—particularly for those with bone, joint and muscle pain.

"We want to know how this might be affecting pain, who is most at risk of experiencing flare-ups of their pain and symptoms, as well as understanding who is most at risk of experiencing reduced wellbeing due to social isolation and loneliness.

"We will also be exploring what strategies or skills are needed to be able

to support people to cope better with their pain and symptoms during this time.

"This work is important as it will tell us who is most at risk of poor health and wellbeing during this time, so health services can better support these people during the COVID-19 pandemic."

For more information, or to take part in the survey, visit:

https://survey.eu.qualtrics.com/jfe/form/SV_0JHMDcuirafKOgZ

Provided by University of East Anglia

Citation: How lockdown impacts those with bone, joint and muscle pain (2020, April 29) retrieved 12 May 2023 from <https://medicalxpress.com/news/2020-04-lockdown-impacts-bone-joint-muscle.html>

This document is subject to copyright. Apart from any fair dealing for the purpose of private study or research, no part may be reproduced without the written permission. The content is provided for information purposes only.