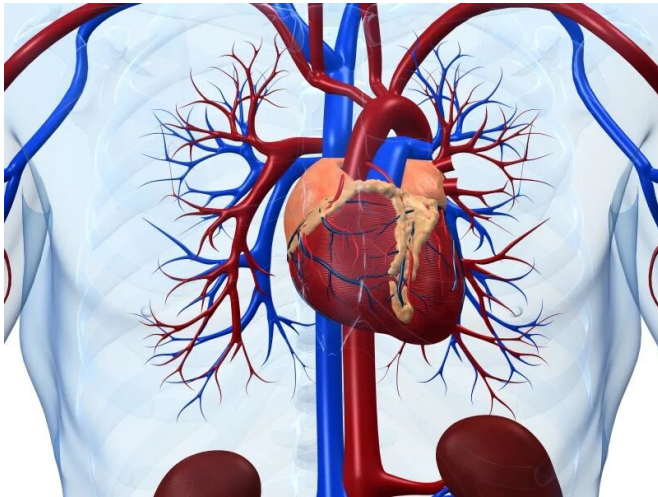


# Ischemic heart disease is major health burden worldwide

19 October 2020



2017, age-standardized IHD deaths worldwide were mainly attributable to dietary risks, high systolic blood pressure, high low-density lipoprotein cholesterol, high fasting plasma glucose, tobacco use, and high body mass index.

"As IHD is largely preventable and treatable, more strategies aimed at implementing cost-effective interventions and addressing modifiable risk factors are urgently needed, particularly in geographies with high or increasing burden," the authors write.

**More information:** [Abstract/Full Text](#)

Copyright © 2020 [HealthDay](#). All rights reserved.

(HealthDay)—A total of 126.5 million people lived with ischemic heart disease (IHD) globally in 2017, with 10.6 million new cases occurring, according to a study published online Oct. 5 in the *European Heart Journal: Quality of Care & Clinical Outcomes*.

Haijiang Dai, M.D., from York University in Toronto, and colleagues estimated the burden and [risk factors](#) for IHD in 195 countries and territories from 1990 to 2017 using data from the Global Burden of Disease Study.

The researchers found that 126.5 million people lived with IHD globally and 10.6 new cases of IHD occurred in 2017, resulting in 8.9 million deaths, 5.3 million years lived with disability, and 165 million years of life lost. Despite the decrease in age-standardized rates between 1990 and 2017, the global numbers of these burden metrics of IHD increased significantly. There was wide variation by [geographic location](#) in the burden of IHD in 2017 and its temporal trends from 1990 to 2017. In

APA citation: Ischemic heart disease is major health burden worldwide (2020, October 19) retrieved 4 June 2022 from <https://medicalxpress.com/news/2020-10-ischemic-heart-disease-major-health.html>

*This document is subject to copyright. Apart from any fair dealing for the purpose of private study or research, no part may be reproduced without the written permission. The content is provided for information purposes only.*