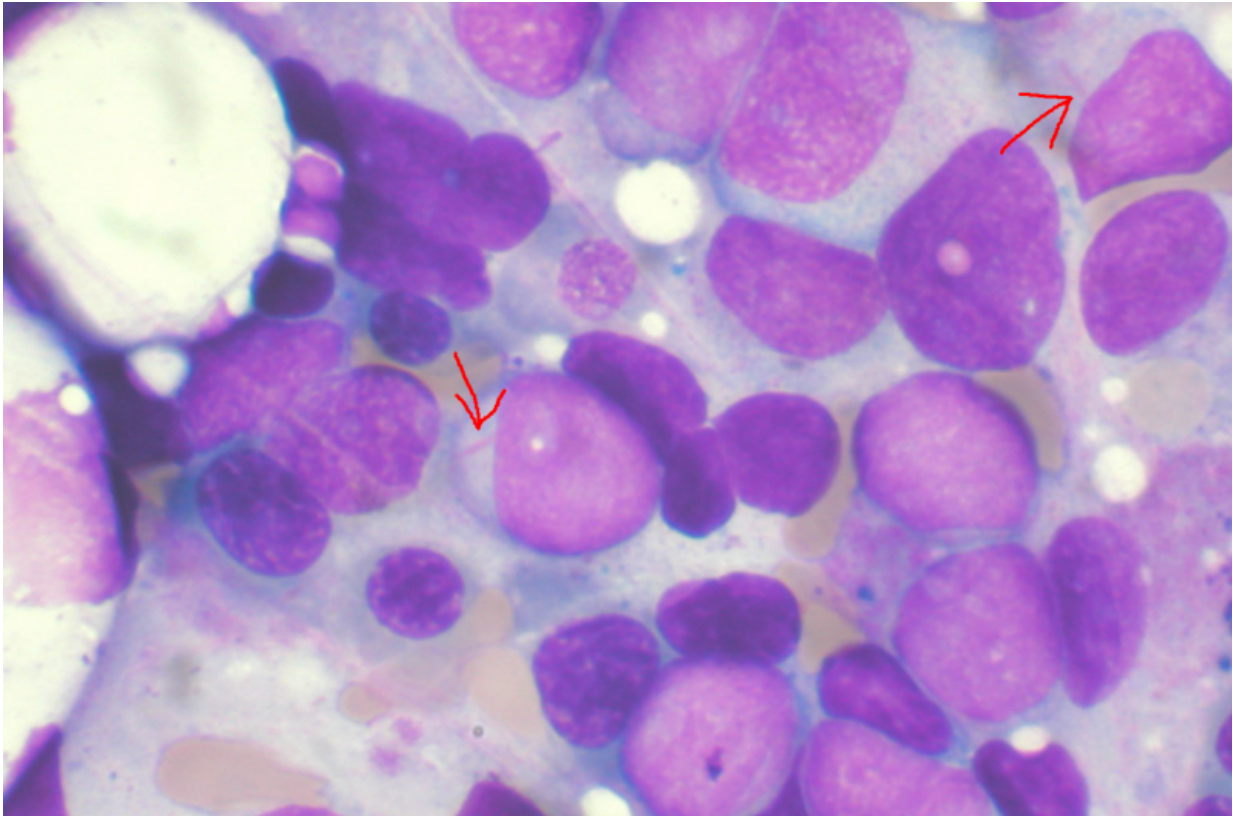


New therapeutic approach against leukemia

October 23 2020



Bone marrow aspirate showing acute myeloid leukemia. Several blasts have Auer rods. Credit: Wikipedia

Leukemia frequently originates from the so-called leukemic stem cell, which resides in a tumor promoting and protecting niche within the bone marrow. Scientists from the Max Planck Institute of Biochemistry in Martinsried, Germany, have found a new way to make these cells

vulnerable by specifically dislodging these cells from their niches.

Since blood cells have a limited lifespan, are lost during bleeding or are used up during infections, they must be replaced continuously. This supply is ensured by the so-called hematopoietic stem cells in the bone marrow. These cells can develop into any type of blood cell.

Since blood cells have a limited lifespan, are lost during bleeding or are used up during infections, they must be replaced continuously. This supply is ensured by the so-called hematopoietic stem cells in the bone marrow. These cells can develop into any type of blood cell.

In [chronic myeloid leukemia](#), the [hematopoietic stem cell](#) undergoes a genetic mutation by recombining chromosome 9 and 22. As a result, gene building blocks fuse that would otherwise not be in contact with each other. The incorrectly assembled chromosome is called a Philadelphia chromosome and harbors the construction manual for the so-called BCR-ABL oncogene. This causes the leukemic stem cell to behave selfishly and divide at the expense of healthy blood stem cells.

Without Kindlin-3 no leukemia

A leukemic stem cell creates an environment termed the malignant niche that ensure its survival and proliferation. To remain in this tumor-promoting niche, the leukemic stem cell uses so-called integrins to attach itself to a scaffold of extracellular proteins, the so-called extracellular matrix, and to neighboring cells. In the leukemic stem cell, the activity and function of the integrins is facilitated by an intracellular protein called Kindlin.

Peter Krenn, first author of the study, explains: "The isoform Kindlin-3 is only used by [blood cells](#). If mice harbor leukemic stem cells that lack Kindlin-3, they do not develop [leukemia](#). Without Kindlin-3 and active

integrins, the leukemic stem cells cannot attach themselves to their niche environment and are released from the bone marrow into the blood. Since they cannot home elsewhere either, they remain in the blood. There the leukemic stem cells lack the urgently needed support, which they usually receive from the niche, and die."

New therapeutic approach: Kindlin-3 and CTLA-4

The new finding that the leukemic stem cells express a protein called CTLA-4 on their surface, which is absent from healthy blood stem cells, allowed the researchers to distinguish a leukemic blood stem cell from a healthy [blood](#) stem cell. The scientists used the CTLA-4 receptor as a shuttle to deliver a Kindlin-3 destroying compound, into leukemic stem cells. Peter Krenn explains, "CTLA-4 is only briefly present on the cell surface and is then rapidly recycled back into the cell and then back to the cell surface again. This enabled us to introduce a Kindlin-3 degrading siRNA into the cell by coupling it to a CTLA-4-binding RNA sequence, which is called aptamer. The leukemic stem cell without Kindlin-3 is flushed from the [bone marrow](#) and the leukemia loses its origin and runs out of fuel."

Peter Krenn summarizes: "In our current study we have developed a new therapeutic approach to treat chronic myeloid leukemia in mice. However, the principle of the therapy is universally valid. The inhibited Kindlin-3 production and consequent loss of integrin function prevents the [cancer cells](#) from being able to adhere and settle in tumor-promoting niches. I assume that this method will also prevent the cancer [cells](#) of other types of leukemia from settling and that these diseases could thus become much more treatable."

More information: Peter William Krenn et al, Kindlin-3 loss curbs chronic myeloid leukemia in mice by mobilizing leukemic stem cells from protective bone marrow niches, *Proceedings of the National*

Academy of Sciences (2020). [DOI: 10.1073/pnas.2009078117](https://doi.org/10.1073/pnas.2009078117)

Provided by Max Planck Society

Citation: New therapeutic approach against leukemia (2020, October 23) retrieved 4 February 2024 from <https://medicalxpress.com/news/2020-10-therapeutic-approach-leukemia.html>

This document is subject to copyright. Apart from any fair dealing for the purpose of private study or research, no part may be reproduced without the written permission. The content is provided for information purposes only.