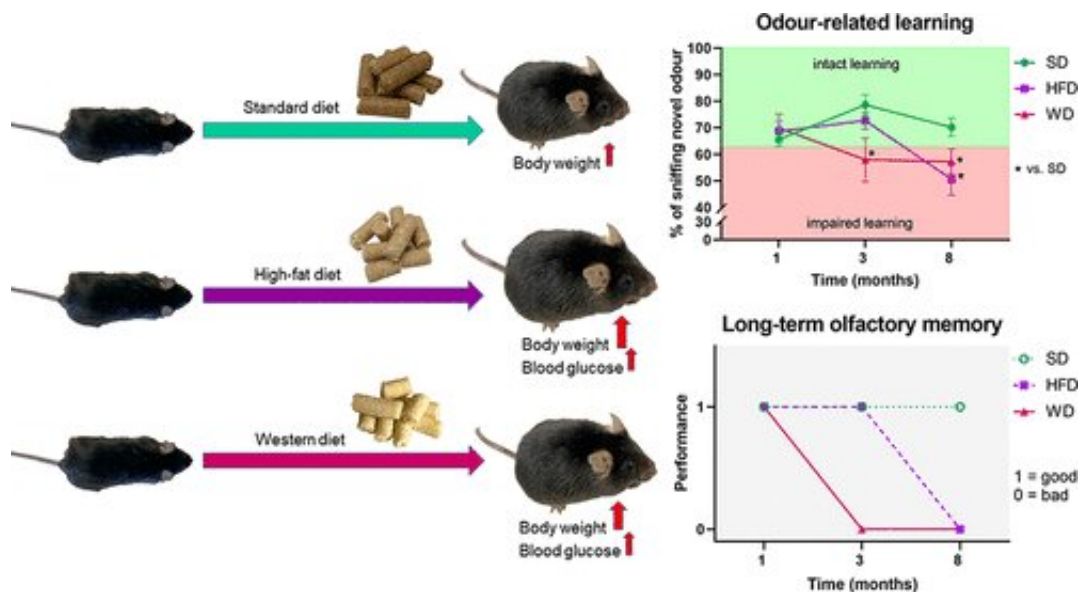


# Western diet impairs odor-related learning and olfactory memory in mice

November 4 2020



Credit: American Chemical Society

Problems with the sense of smell appear to be an early indicator of cognitive decline in people with type 2 diabetes. However, it's unknown whether factors such as diet and obesity play a role in who develops these symptoms. Now, researchers reporting in *ACS Chemical Neuroscience* found that mice fed a moderate-fat, high-sugar chow (simulating a Western diet) showed a faster decline in their ability to learn and remember new odors.

Some people with type 2 diabetes (T2D) show signs of [olfactory](#)

[dysfunction](#), including problems with detecting, discriminating or recalling odors, or even a complete loss of smell. These symptoms are strongly associated with [cognitive impairment](#), and evidence suggests they could be an early indicator of the condition in people with T2D. Obesity, which is the main risk factor for T2D, has also been associated with olfactory dysfunction, but the impact of obesity on the sense of smell specifically in these patients is unclear, as studies have produced conflicting results. Also, it's unknown whether certain nutrients in the diet, such as fat and sugar, affect the sense of smell. To find out, Grazyna Lietzau, Cesare Patrone and colleagues wanted to compare the effects of two diets on different olfactory functions in mice: a high-fat, moderate-sugar diet (HFD); and a moderate-fat, [high-sugar diet](#) (similar to a Western diet, WD). In mice, both diets cause obesity and T2D-like features.

At one, three and eight months, the team performed tests to assess different olfactory functions in the mice. By eight months, both the HFD- and WD-fed mice had impaired odor detection, odor-related learning and olfactory memory compared with the control mice. However, the WD-fed mice had a faster decline in the latter two abilities, showing olfactory dysfunction as early as 3 months after beginning the diet. These findings indicate that a high dietary sugar content, rather than hyperglycemia or [weight gain](#), is linked with early deterioration of olfactory functions related to learning and memory, the researchers say. How sugar causes these effects, and whether they are also seen in humans, the researchers acknowledge, remains to be determined.

**More information:** Grazyna Lietzau et al. Western Diet Accelerates the Impairment of Odor-Related Learning and Olfactory Memory in the Mouse, *ACS Chemical Neuroscience* (2020). [DOI: 10.1021/acscemneuro.0c00466](#)

Provided by American Chemical Society

Citation: Western diet impairs odor-related learning and olfactory memory in mice (2020, November 4) retrieved 3 February 2023 from <https://medicalxpress.com/news/2020-11-western-diet-impairs-odor-related-olfactory.html>

This document is subject to copyright. Apart from any fair dealing for the purpose of private study or research, no part may be reproduced without the written permission. The content is provided for information purposes only.